

# PSR DISPATCH



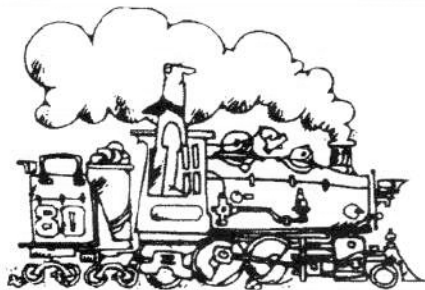
**Pacific Southwest Region**  
National Model Railroad Association



Volume 17, Number 2

2nd Quarter, 1999

© Copyright 1999, Pacific Southwest Region, NMRA



## Shop Talk from the Roundhouse

Robert Chaparro, President

coronabob@hotmail.com

### The PSR Convention Guarantee

Those of you who are planning to attend our (your) PSR Convention in Flagstaff can skip this column and go right to the pictures of the swimsuit models on Page 6. Those of you who have attended a PSR Convention but for some very good reason cannot attend this year can also skip to the swimsuit models. For those of you still with me, I have a confession... there are no swimsuit models. Maybe next issue if we can find a thong in SP Daylight colors for Bob Sherlock...

If you're still with me that means you have never been to a PSR Convention, and you intend to keep your streak alive again this year. Now ask yourself why you, someone who enjoys model railroading, would miss a great opportunity to enjoy several days of concentrated model railroading?


**Is it cost?** The convention is moderately priced and the cost of food and lodging is the same as for a non-convention vacation. By the way, the convention hotel (the Little America Inn) is an excellent facility with large, comfortable rooms and beautiful grounds. Budget-priced lodging also is nearby.

**Is it time?** The convention is within an easy day's drive of anywhere in our Region. The trip up and back plus the convention consumes less time than a week's vacation. Also, most highway routes that converge on Flagstaff feature abundant railfanning opportunities.

**Is it value for the buck?** Look at all you get: modeling clinics, prototype and home layout tours, a company store, contests, displays, a banquet, a Hobo breakfast, door prizes, a swap meet and non-rail activities, too. The Flagstaff area is beautiful and has many leisure and night activities. Within easy driving distance are the Grand Canyon, Sedona, Jerome, Meteor Crater and Diablo Canyon.

**And don't forget the fellowship.** I've made many a life long friend in this hobby through attending conventions. In some cases, I met model railroaders from my own community for the first time at a convention. You may find someone who enjoys the same obscure short line or rail/industry combination.

This is what I mean by several days of concentrated model railroading. And when you return home you will find yourself inspired and enthusiastic about working on a model, adding scenery or track to your layout, or maybe doing further research on some aspect of railroad history you discovered at the convention.

As the guy in the suit commercial says, "I guarantee it!" 

## In the Pines in '99

### Flagstaff, Arizona



September 15-19  
1999

# Chief Gandy Dancer

Bob Sherlock, Trustee

RLS4000@aol.com



## Mid-Year 1999 Board of Trustees Meeting

1. A new vendor for the Label Program should have been selected by now.

2. Label Program Net proceeds are \$20,000 plus. This money is to go towards the facility loan. The names and addresses are to be corrected for the next run.

3. The President/Vice President Trip to Europe provided \$7400 to the general fund. Looking at a trip to South America this year. Keep an eye on the **NMRA Bulletin** for additional information. (Editors Note: see page 50 of the May 1999 issue.)

4. The Ravenscroft Property is still on the market.

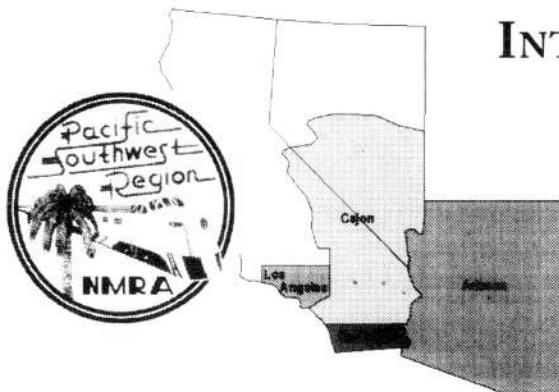
5. GIVE KIDS THE WORLD — If interested in assisting in the project contact me and I will put you in touch with Howard Horn. Howard has done a fine

job of coordinating the project.

6. There is a new NMRA Investment Committee consisting of the following: Bob Charles, Doug Auburg, David North, Jim Thompson, Jim Cook and Connie Rudder.

7. Membership continues to decline despite the efforts of the many, many membership recruitment people. This can be traced to the inconsistent service provided by the headquarters office. There have been steps taken to try to alleviate the problem. A new office manager, Sharon Clayton, has been hired as well as a new Kalmbach Library Director has been named, Gordan Belt. If any of you experience a problem with the Headquarters Office, please contact me so that we may correct it.

8. It is getting close to time to send in reports and etc. for the St. Paul Convention. Contact me with your concerns. 📠



## INTRODUCING THE NEW MEMBERS OF THE *PACIFIC SOUTHWEST REGION*

Jim Barcus, Member Services

jbarcusr@aol.com

Introducing the new members of the Pacific Southwest Region since the first of January 1999. Some of these members are rerais and some are NMRA members that have just joined the PSR.

### *Arizona Division*

Kenneth Burling	Michael S. Jones
Robert Crowley	Peter Laier
Cathy Deibel	Tom Reid
Curtis Deibel	Hal Ross
Sergion J. De Pinto	Rodger Shaver
Richard Fields	Don Spenkel
David Jerry	Jim Woldshin

### *San Diego Division*

John J. King  
Donald Sams

### *Cajon Division*

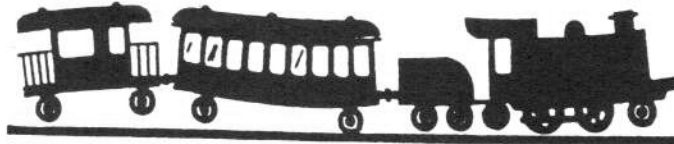
David Allen	David L. Kreipl
Lynn Austin	Dennis Miller
Carl Boldgrien	Mike Sandstedt
John J. Clark	Robert Wengert
Jack Hearst	Frank Zila

### *Los Angeles Division*

Jose' Genoro Felix	Vic Metzgar
Richard C. Hesar	Dan Poirer
Kent G. Iverson	Pat Scognamillo
Rick E. Jones	Sondra Lynn Segall

## MARICOPA EXPRESS JUNIOR RAILWAY

*A Non-Profit Arizona Corporation - Tax Exempt*



**KIDS IN TRAINING**

# Maricopa Express Junior Railway

The Maricopa Express Junior Railway, Inc. is a tax-exempt, non-profit educational youth group for activities related to model railroading and railroads in general. The group was organized by Evonne C. Keech, the founder, in 1983, and incorporated as an Arizona corporation on April 2, 1984.

MEJR achieved the status of a qualified charitable 501 (c)(3) organization on July 8, 1985, by its attorney, James Knollmiller, a model railroader of great renown, who has his own 20 x 60 HO Scale model railroad in his basement home.

The goal of the MEJR is to give kids ages 6 to 18 an interesting and meaningful learning experience in model railroading and other aspects of railroading. Evonne Keech's idea was to combat juvenile delinquency by providing a learning experience for the youth.

The MEJR attends mall shows and events such as Railfair in Scottsdale's McCormick Railroad Park and the GATS train shows in Phoenix Civic Plaza. The MEJR is affiliated with other groups in model railroading such as the TTOS and TCA. The MEJR has accepted an invitation from the Saguaro Central Railroad Preservation Society and is in the process of entering into an agreement with the Saguaro

Central in which the MEJR will use the facilities at Adobe Desert Mountain Railroad Park. The part is located at 43rd Avenue and West Pinnacle Peak Road, west of I-17 and the Water World Park on Pinnacle Peak Rd. The MEJR will be using a portion of the museum building for their classes.

The MEJR has a non-paid experienced staff of dedicated model railroaders. Currently it has 10 youth members, 8 board members and 7 helpers (or associate) members. Youth memberships are open as well as adult Board Member and Helper positions. Dues are \$20.00 per year for the youth, \$10.00 initial and \$1.00 per month for the Board Members and \$5.00 initial and \$1.00 per month for Helpers.

Meetings are the third Saturday of the month from 1 PM to 3 PM. Work meetings are the first Saturday of the month from 1 PM to 3 PM. Work meetings and board meetings are once per month and may be called by the President as mutually agreed upon by Board Members and/or Helpers.

For additional information, you can contact Bruce Keech or Evonne Keech at (623) 842-1860 from 9 AM to 1 PM or, after 5 PM Mon-Fri, via Fax at (623) 435-9885. The MEJR mailing address is: Maricopa Express Junior Railway, Inc., P.O. Box 2328, Glendale, AZ 85311. ☎

*“A Brand New Approach to  
an Age Old Problem”*

This article provided by Bruch Keech, President of the Maricopa Express Junior Railway, Inc.



# Reports from PSR

## ARIZONA DIVISION DIRECTOR'S REPORT

RICHARD DICK  
rdick@west.ratheon.com



Arizona Division is having a busy year. We have already had one Division Meet in Phoenix. There will be another one in Prescott in June, the Regional Convention in Flagstaff in September and the Division Meet in Tucson in November. There are lots of activities, and they are open to all PSR members and model railroaders. We hope some of you from outside the Arizona Division can come for our Division Meets.

Someone raised the question "What happened to the Grand Canyon Railway Tour" at the Regional Convention. In early discussions with them it was indicated that the tour was possible. However, the tour did not materialize since we had not booked a train ride. However, if you are coming to Flagstaff from the



west on I-40, stop at Williams to see their depot and museum. You might even be able to see the train depart or arrive! They do run steam engines in September; you might be able to see one!

I will be leaving in the morning for a few days at Key West, FL. I am looking forward to the trip, to see what remains of the Key West Extension of the Florida East Coast Railroad. I have heard there are a few small buildings on some of the keys, and possibly some remains of trestles. Hopefully, I will find some interesting RR remnants.

We will be having elections for Division Superintendent and for Division Director this year. We have several good candidates and no matter who wins, the Arizona Division will be served well! 🚂

## CAJON DIVISION DIRECTOR'S REPORT

ED HALL, MMR  
ehall@net-tek.net



Cajon Division is starting the year out very good. First, the division has a new superintendent: his name is Jim Kociemski. Jim is from the east coast and is used to a lot of activity. He actually commenced before he was elected. With the additional help the Division will benefit greatly, and I may now focus on my duties and do a better job.

Our goals for activities have been met and the coordination between the staff members undoubtedly will make the Division run smoother and get the members more involved.

Our finances are in good shape with a checkbook balance of \$4496.80.

We will put out a "reminder" in the mail for the next meet that will deplete the account about \$70.00.

The 2001 convention is underway. I contacted the Las Vegas Convention Bureau and out of all the hotels in the area I only found the Palace Station to be acceptable. The hotel has a large dividable room and will accommodate all our needs. They also have a railroad theme. Room rates will be moderate and meals will astound you with the cost. The activities in the works will make this convention the one people will talk about for years to come, more on that later.

We will concentrate on some fund raising projects in the future. I found a copy of the Cajon Division logo and will be trying to make up patches to sell. We may also have T-Shirts made up, as well. 🚂

# SUPPORT YOUR LOCAL HOBBY SHOP!

# Division Directors



## LOS ANGELES DIVISION DIRECTOR'S REPORT

DAVID COX, MMR  
david23star@1stnetusa.com

During the past six months the Los Angeles Division has had a very successful home and club layout tour and has been busy planning a Banquet, a Spring meet (public show), and a layout tour. But these activities are what you would expect in this report and you probably have already read the details of these events in the Dispatch.

Now the Los Angeles Division is seeking ways to increase our membership and event participation. This past Fall we mailed our newsletter, *The Coupler*, to all those NMRA members living within our Division boundaries who were not PSR members. By the way, there are almost as many non-PSR members as there are PSR members! As a result of that mailing several new members joined PSR and attended our layout tours.

We will continue to send information to non-PSR members especially preceding special events to not only get them to attend but to have them join.

We are also subsidizing events with our Long Beach Convention funds to make them more affordable and encourage more participation. This worked well at our Banquet in March this year where we had an attendance of 57 which included folks from San Diego and Cajon Divisions. 🚂



## SAN DIEGO DIVISION DIRECTOR'S REPORT

CHUCK HART  
charles.v.hart@cpx.saic.com

### Convention Results

The Convention committee held its last meeting in November 1998. All business has been completed and sub-committee reports have been collected/requested by the Chairman. A total of \$1721.00 was realized as *PSA DISPATCH* — 2nd Quarter, 1999

profit from the convention. Obviously, this is not the amount that was projected or expected. Rising costs for convention space in the San Diego area and the reluctance of commercial enterprise to be as generous as in the past contributed to a low income.

### Division Meetings and Events

The San Diego Division has been keeping its standard yearly schedule as developed in recent years. The Fall Meet was held at the San Diego Model Railroad Museum in November 1998. The meet was well attended and many models were displayed as this is the San Diego Division annual contest meet. The first quarter meeting held in January 1999 resulted in a tentative yearlong schedule of events. The Winter Meet was held in February 1999. The meet included a Division Business Meeting, Favorite Model Contest, and a 3-hour clinic on the basics of painting with brushes and airbrushes.

### 2002 Convention

A 2002 preconvention committee was developed during the January 1999 meeting. This committee will look for a suitable site and develop a preliminary convention plan of events. The committee may be reporting findings as early as the April 1999 meeting.

### San Diego Division Offices/Committees

Presently the San Diego Division committees are filled for the exception of the Membership Chairman. The Division realizes the importance of this position and is actively seeking a candidate. An election will be held in April 1999 for the positions of Superintendent and Clerk/Paymaster. Presently both positions have candidates in the running. The 2nd quarter *MAILHOOK* will distribute a ballot to the members.

### Near Future Events.

The Division will participate in a road trip during the month of April sponsored by the Short Trak'N Railroad Club. The trip will extend from San Diego to Needles and back over a three-day period. Incidentally, the Short Trak'N Railroad Club recently obtained certification from the NMRA as being club number 25 on record with 100% NMRA members. The club has 17 members at this time. The next Division Meet will take place on the 22nd of May. This is the annual Division meeting and will consist of installation of the elected officers and a Swap Meet. 🚂

# HELP WANTED BY THE LOS ANGELES DIVISION FOR THE LOS ANGELES EXTRA 2000 CONVENTION

DAVID COX, MMR  
david23star@1stnetusa.com



**D**o you know how to build benchwork? Can you lay track and switches? Can you wire a layout? Are you good at soldering or air brushing or applying decals? How about building scenery items such as trees, plaster rocks, or ground cover? Have you built a craftsman kit or super detailed a ready-to-run model? Have you installed realistic operating couplers on your cars and locomotives? Many modelers have difficulty with these tasks. But if you can do any of these things you can help others by giving a clinic.

At the Los Angeles Extra 2000 Convention, in September next year, we are looking for modelers like you to show other modelers how to build, operate, and enjoy model railroading. The clinics are very informal, last about an hour, and earn credit towards the Author Certificate in the Achievement Program.

We are looking for clinic subjects to cover the basics for new modelers as well as advanced assistance for modelers wanting to improve their skills.

The clinics could be on:

Benchwork	Couplers	Decaling	Tunnels
Track	Ground Cover	Soldering	Vehicles
Switches	Scratch Building	Using ACC	Loads
Ballasting	Layout Design	Trees	Details
Switch Machines	Prototype	Water	Wharves
Modules	Signals	Rocks	Model Photography
Wiring	Painting	Pavement	AP Program
Operations	Weathering	Railroad History	Super Detailing
DCC	Kit Building	Collecting	Paint Removing
Scenery	Dry Transfers	Structures	Arts And Crafts
Signs	Backdrops	Bridges	Lighting

Loco Maintenance and Performance

Working with Styrene, Wood, Brass, Foam, Paper, Resin, Plaster

Contest Modeling and Entry Forms

Drawing Of Models From Photos

Just about anything to do with enjoying model railroads

We need 30 "Clinicians" for the 2000 Convention with each one making at least two presentations. The clinics will be presented Wednesday evening, September 13, through Saturday afternoon, September 16, and some at the Train Show on Sunday, September 17. Time and day preference will be given in order of those responding. Those modelers presenting clinics will receive reduced convention registration fees, door prizes, and other incentives.

We are also seeking manufacturers and vendors for clinics but modelers give the best clinics.

So now that you are ready to volunteer for a clinic, contact our Clinic Chairman, Frank Kenny, at 791-0123 or frank@frankkenny.com or 23445 Evalyn Ave., Torrance, CA 90505.

Thank you for making the 2000 PSR Convention more enjoyable for everyone. 🚂



# In the Pines in '99

## 1999 PSR Convention

### September 15-19, 1999 - Flagstaff, Arizona

# Registration

Date \_\_\_\_\_

	Rail	Raillette/ Non-Rail	Youth
Name _____	_____	_____	_____
Name _____	_____	_____	_____
Name _____	_____	_____	_____
Address _____	Phone ( ) _____		
City _____	State _____	Zip _____	
NMRA No. _____	PSR No. _____	Other Reg. No. _____	Primary Scale _____

Check here if a member of your party is handicapped: \_\_\_\_\_

#### Basic Fare

Rail, Raillette, Non-Rail	No. _____ @	\$65.00 ea. \$ _____
Youth (6 thru 20 years)	No. _____ @	\$35.00 ea. \$ _____
Single Day (Which? Th Fr Sa)	No. _____ @	\$25.00 ea. \$ _____

**Total Basic Fare: \$ \_\_\_\_\_**

Convention Car (HO or N) \$13.00 \_\_\_\_\_ Convention Patch \$4.00 \_\_\_\_\_

Make checks payable to: **"In the Pines in '99"**

**Registrar:** Richard Dick  
5948 E. Hawthorne St.  
Tucson, AZ 85711-1528

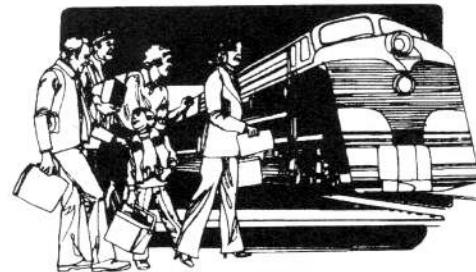
#### Convention Hotel

**Little America Hotel**  
2515 East Butler Avenue  
P.O. Box 3900  
Flagstaff; AZ 86003

**Reservations: 1-800-352-4386**

\$99.00 Single / Double per night, \$10.00 each additional person. Attendees are responsible for their own arrangements. Be sure to state you will be attending the Model Railroad convention to get the special room rates.

# FLAG STOPS



## Lindsay Smith, Member Aid

wlindsays@compuserve.com

This is an update to the Flag Stops published in previous issues of the *PSR DISPATCH*. If there are omissions or mistakes in this list, please contact me. Updates to these events can be found on the PSR Web Site at [www.getnet.com/~dickg/nmra/psr/psr.html](http://www.getnet.com/~dickg/nmra/psr/psr.html). Events are usually free to observers/visitors unless otherwise noted. Sellers/exhibitors should contact the event management for rates.

The *PSR DISPATCH* presents the information provided by the sponsors and cannot be responsible for anything more than your amusement. Visitor donations are always welcomed by the clubs. Look for raffles and other fund raisers at the event to help support the activities.

Contact me at (909) 599-0182, [wlindsays@compuserve.com](mailto:wlindsays@compuserve.com), or [FSMITH2784@aol.com](mailto:FSMITH2784@aol.com) to get on the list. I also maintain the activities list for LA Division on the Internet; see <http://www.nmra.org>, Regions and Divisions, Pacific Southwest Region. Updates to these events can be found on the PSR Web Site at [www.getnet.com/~dickg/nmra/psr/psr.html](http://www.getnet.com/~dickg/nmra/psr/psr.html)

## 1999

### MAY

- 15** LA Div. Far West Layout Tour. Lew LaForce 805 487 5049.
- 15 & 16** GATS. Tucson AZ, Pima Co. Fairgrounds. \$5.00 plus parking. 11-5pm. [www.GATS.com](http://www.GATS.com)
- 16** Allied Trains Auction. Arcadia Masonic Lodge, 50 W. Duarte Rd. Viewing 0900 Auction 1100. 310 313 9353.
- 22 & 23** Belmont Shore Swap Meet & Open House. Angel's Gate Park, 3601 Gaffey St. San Pedro. Swap Sat. 8 to noon. Sat and Sun Open house, 10 - 4PM. Dick Billings 310 373 6658 [www.primnet.com/~schifer/bsl.html](http://www.primnet.com/~schifer/bsl.html)
- 22** San Diego Division Spring Swap Meet and Spring Meet. 8 AM Swap Meet. Noon, Pot Luck, Division Meeting and Clinics. Chuck Hart 619 748 6816.
- 22-29** Pacific Railroad Society Tour. A Southwest Exploration Tour. Call Ed Von Norsdeck 909 787 8350 afternoons or Barbara Sibert 626 570 8651.
- 29, 30** Santa Susana Railroad Historical Society, Swap Meet and Open House., At the Santa Susana Depot Museum in Santa Susana Park, Simi Valley. Saturday Swap meet hours, 7:00 a.m. to 11:00 a.m. donation \$1.00 kids free. Sat. and Sun. Open House 10:30 a.m. till 4:00 p.m. To reserve selling space Bruce Bloch 818 986 1322, [sunset@westworld.net](mailto:sunset@westworld.net) or Dan Wexler 818 997 6354.

### JUNE

- 5** Pacific Railroad Society Metrolink to the Edwards AFB Flight Test Center Museum. Fare \$34.00
- 10\*, 11\*, 12, 13** The Big Train Show. G-Gauge Garden Railway. \* Tours on Thursday and Friday. Queen Mary, Long Beach CA. Gates for show open at 1000. [www.g-scale.com](http://www.g-scale.com)
- 18 - 17** 1999 Sacramento Railfair '99. California State Railroad Museum. Part of the Gold Rush to Statehood Sesquicentennial.

### JULY

- 12** San Diego Division Meeting. 7 PM San Diego Model Railroad Museum. All members welcome.
- 16** Dispatch deadline 3/1999. Mail 2-6 August
- 17 to 24.** "NorthStar '99" NMRA National Convention. Saint Paul/Minneapolis, MN. Information: Pat Walker, 1116 Randolph Ave., #16, Saint Paul, MN 55105. Dial 612 699 5245.
- 31** "O. Winston Link: Memories and Machines" Exhibition Lecture by Thomas Garver, Exhibition Curator. \$6 Admission Fee; \$5 for students, senior and active duty military; free to museum member and children under 15 accompanied by an adult. Lecture fee includes entry to the museum. 11 AM for 1 Hour. Thornton Theater. San Diego Model Railroad Museum, 1649 El Prado, Thornton Theater, Casa de Balboa building, Balboa Park, San Diego, CA. (619) 696-0199

### AUGUST

- 1 to 31 Oct** "O. Winston Link: Memories and Machines" Exhibition. Tues-Fri 11 to 4; Sat-Sun 11-5. San Diego Model Railroad Museum, 1649 El Prado, Casa de Balboa building, Balboa Park, San Diego, CA. (619) 696-0199
- 6, 7 & 8** Twin Rivers Special '99. Pacific Northwest Region Convention. Red Lion Hotel, Lewiston ID. [wilmerb@valint.net](mailto:wilmerb@valint.net) (Wil Seaver) or 800 462 2882



## AUGUST (continued)

- 7 San Diego Division Summer Meet and Family Picnic. Rohr Park Chula Vista. Ed Hatch 619 274 2283  
**28&29** GATS. Ventura Co. Fairgrounds/Seaside Park 10 W Harbor Blvd. Ventura CA. \$5.00 plus parking. 11-5pm.  
[www.GATS.com](http://www.GATS.com)

## SEPTEMBER

- 11 Pioneer Western Model Railroad Ol Fashioned Card Table Swap Meet. 7430 Orangethorpe, Buena Park, CA. Free. 8 AM to Noon. Paul E. Bush, 1619 Sunny Crest Dr., Fullerton, CA 92835. (714) 526-6718  
15 to 19 Pacific Southwest REGION CONVENTION. In the Pines in '99 Little America Hotel Flagstaff AZ. Richard Dick, Registrar. 5948 E. Hawthorne St. Tucson AZ [rdick@west.raytheon.com](mailto:rdick@west.raytheon.com)  
25 Santa Susana Swap Meet. Sat Swap 7 - 10:30, Open House 10:30 to 4. Admission \$1.00 donation. Simi Valley CA. For information contact Robert Cochran 805 252 1042. Santa Susana Depot is located at Santa Susana Park (Katherine Rd. Near Kuehner Dr. adjacent to and South of the railroad tracks, about 1 mile South of Los Angeles St. in Simi Valley). If coming from the I-118 it is the first right on Kuehner after crossing the RR tracks.

## OCTOBER

- 2 & 3 GATS. Phoenix, AZ. Phoenix Civic Plaza 225 E Adams St. Phoenix AZ. \$5.00 plus parking. 11-5pm. [www.GATS.com](http://www.GATS.com)  
9 Pomona Valley Model Railroad Club. 8 -12 Swap Meet, 9- 4 Open house. 132 E. 1st Street, Pomona, CA. Club phone 909 865 7035. Garey and First SE corner.  
15 Dispatch deadline 4/1999. Mail 1 - 5 November  
16 Los Angeles Model Railroad Society Swap Meet and Open House. Swap meet, Sat 7 - noon. Open house 10 - 5 both days. 14005 S. Crenshaw Blvd., Hawthorne, CA 90250. 310 675 -3361. Location is North of Rosecrans across the street from Strawhat Pizza and upstairs. Leland Roe 310 679 4745. <http://www.fileshop.com/personal/jashaw/rrclubs/lamrs.html>

## NOVEMBER

- Pasadena Model Railroad Club Fall Show. 5458 Alhambra Ave., Los Angeles CA. Donations are \$3.00 for adults & \$1.00 for children. Joe Behan 818 284 2664. [www.fileshop.com/personal/rrclubs/pmrc.html](http://www.fileshop.com/personal/rrclubs/pmrc.html)  
6 Sat. 1-5 PM and 7-10 PM  
7 Sun. 1-5 PM  
9 Tue. 7:30-10 PM  
13 Sat. 1-5 PM and 7-10 PM  
14 Sun. 1-5 PM

## DECEMBER

- 4 & 5 GATS. Del Mar CA. Del Mar Fair, 2260 Jimmy Durante Blvd. \$5.00 plus parking. 11-5pm. <http://www.GATS.com>  
11 & 12 GATS. Costa Mesa, CA Orange Co. Fairgrounds. \$5.00 plus parking. 11-5pm. <http://www.GATS.com>

# 2000

## JANUARY

- 21 Dispatch deadline for 1/2000. Mail 7 - 11 Feb

## JULY

- 30 to Aug. 6. "21st Century Limited" NMRA National Convention. San Jose, CA. Information and Registration: Bob Ferguson, 530 Fig Tree Lane, Martinez, CA 94553

# 2001

## JULY

- TBD Gateway 2001 NMRA National Convention. St. Louis, MO. Information and Registration: Gateway 2001, P.O. Box 6848, Chesterfield, MO 63006-6848 or [www.gatewaynmra.org/gateway2001.htm](http://www.gatewaynmra.org/gateway2001.htm) or email: [info@gatewaynmra.org](mailto:info@gatewaynmra.org)  
The information about this event published in the May 1999 *NMRA Bulletin* is incorrect. The information given here was taken directly from the Gateway 2001 web site at [www.gatewaynmra.org/gateway2001.htm](http://www.gatewaynmra.org/gateway2001.htm)

**Elie Amiel**  
**Born 8-15-1921**  
**Deceased 11-18-1998**

Elie Amiel passed away on November 18, 1998. He was a member of the National Model Railroad Association and a valued member of the Pacific Southwest Region for many years. He served as Membership Chairman for the Los Angeles Division, the Pacific Southwest Region, itself, and the Arizona Division.

Elie was born in Honolulu, Hawaii, on August 15, 1921, and became interested in railroading, developing a great interest in narrow gauge railroading of the Islands. He married his lovely wife Evelyn in Honokoa, Hawaii, in June of 1946. They celebrated their fifty-second wedding anniversary in 1998. In addition to being a model railroader, Elie had many hobbies, including photography, and was an avid jazz fan. He joined the NMRA in 1947 and served a long reign as Membership Chairman for both the Pacific Coast Region and then the Pacific Southwest Region.

Elie worked for the US Post Office for twenty two years and retired as an Assistant Postal Examiner - (the Post Office Trouble Shooter). He was the youngest Master Mason in the Hawaii Lodge. He also helped organize and became Master of The Rio Hondo Masonic Lodge in El Monte, California.

In appreciation of his long and arduous service to the Pacific Southwest Region, Elie received the PSR Trustee Award at the Convention in San Diego last year. Loved and respected by all, truly a gentleman, he will be greatly missed. ☠☠

**Carroll Powell**  
**Master Model Railroader # 230**  
**Born 7-8-1923**  
**Deceased 12-17-98**

Carroll was an avid model railroader, always building something, from a young child making trains and etc. from the punch outs of cereal boxes to becoming Master Model Railroader # 230. Known as the Tucson Trader, Carroll was always involved with the swap meets in the Arizona Division. Truly a trader, he always had a great sales pitch.

Carroll met his wife Arliss in Iowa and they were married in Des Moines on June 13, 1943. They were married for fifty five and a half years. When they moved to Tucson in March of 1957, Carroll went to work for the Electric Motor Co. He managed the entire company for his last seventeen years of employment. After he retired and became a full time railroader, Carroll served the Arizona Division of the PCR and PSR well for many years. He was always there to assist when needed.

A good and gracious man, The Tucson Trader will be greatly missed. ☠☠

Both of these obituaries were written by Bob Sherlock, Trustee of the Pacific Southwest Region.



# What A Blast!

## Modeling with the NMRA Masters

Scott G. Perry

scottgperry@hotmail.com

This article originally appeared on the rec.models.railroad newsgroup on 25 March 1999.

I participated in the first Modeling With The Masters program held at the NMRA headquarters a few weeks ago and had one of the best times I have ever had. Three days of nothing but intensive model railroading with four MMRs: Clark Koonig, Pete Moffett, Pete Smith and the legendary Allen McClelland (the V&O Story).

I was able to hone my modeling skills at an incredible pace. We built laser kits (Pete Smith), built scenery (Allen McClelland), painted models with air brushes donated by Badger (Clark Koonig), hand-laid track (Pete Moffett), and did tons of other stuff. Good thing I drove since I carried back a car full of stuff. Clark was the driving force behind it all...and what a great guy he is!

There were 20 model railroaders present from all over the US and Canada. I got to meet many new friends, swap ideas, tell stories, and build in our favorite scale. I was the only S Scaler, couple of O Gaugers, and several HO and N guys. I just loved watching the N Scalers scratchbuild late on Saturday night!

They ran us around the clock! Got my money's worth anyway. Where else can you get Allen McClelland to spend the entire day with you doing scenery and learn how he built his railroad? He was right over my shoulder coaching me and teaching me all kinds of tips and techniques. I wish I could tell you everything we did but it would take up too much space.

I have been an NMRA member for years, but never have I appreciated all that the organization provides until I went to headquarters in Chattanooga. Bob Charles (President) was with us the whole time, and Connie (The Boss) Rudder was working away on Saturday to keep us in line. by the way, if you haven't used the library you are nuts! Use it! It is awesome.

They are looking to do another one in October...so sign up! And if you aren't an NMRA member, you are missing out! Write me if you have questions about what we did. 🚂

Scott G. Perry

Chief Cook & Bottle Washer

Atlanta, Gainesville & Toccoa RR



## PACIFIC SOUTHWEST REGION ON THE WORLD WIDE WEB

Lindsay Smith, Member Aid

wlindsays@compuserve.com

PACIFIC SOUTHWEST REGION HOME PAGE

[www.getnet.com/~dickg/nmra/psr/psr.html](http://www.getnet.com/~dickg/nmra/psr/psr.html)

ARIZONA DIVISION

[www.getnet.com/~dickg/nmra/azdiv/azdiv.html](http://www.getnet.com/~dickg/nmra/azdiv/azdiv.html)

CAJON DIVISION

[www.getnet.com/~dickg/nmra/cajon/cajon.html](http://www.getnet.com/~dickg/nmra/cajon/cajon.html)

LOS ANGELES DIVISION

[www.getnet.com/~dickg/nmra/ladiv/ladiv.html](http://www.getnet.com/~dickg/nmra/ladiv/ladiv.html)

SAN DIEGO DIVISION

[www.getnet.com/~dickg/nmra/sdiego/sdiego.html](http://www.getnet.com/~dickg/nmra/sdiego/sdiego.html)

PSR Web Page Counter Displays

[www.getnet.com/~dickg/nmra/NMRACounters.html](http://www.getnet.com/~dickg/nmra/NMRACounters.html)

At press time the counters displays read:

Pacific Southwest Region: 807

Arizona Division: 908

Cajon Division: 484

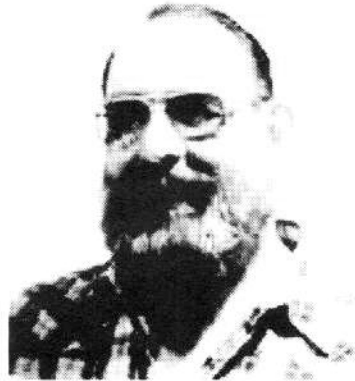
Los Angeles Division: 509

San Diego Division: 367

Visit our Internet sites for a schedule of the railroad related activity in your Division. Tell your associates about the opportunity find out where the good action is hiding. Make a copy of this page and take it into your club for your friends to enjoy. 🚂



# The Candidates for



## JOHN DETERMAN

After much encouragement, I have decided to run for the post of Arizona Division Director. Being the quite, shy, soft spoken wall flower that I am, most members have come to know me over the past years at the meets and conventions. I have thought long and hard before making this commitment. There has been a lot of changes in my life over the past few years, and I have come to appreciate the value of friendships and helping others.

Before his death, MMR Carroll Powell, suggested that I run for this post. I also have the support of the Casa Grande Trader (Lenny Smith), in this endeavor.

With the support of these members, and many others, I feel that I can do the job of representing the concerns of the members and express their ideas to the Region. I feel that my accessibility at meets and at home will be beneficial. 🚗🚗



## ED HALL, MMR

ehall@net-tek.net

Let me start by thanking all of you for your support for the last two years. As your director I have enjoyed serving you and helping the fellowship of the NMRA be more enjoyable for everyone. My plans are to keep pushing for more train meets, increasing the Cajon budget, a closer relationship with the region and a spectacular convention for 2001.

The first subject of train meets: I am working very close with our new Superintendent, Jim Kociemski.

He is anxious to build up the division and together we are setting up a schedule to keep everyone happy in our extremely large division.

Second the budget: With more activity we will bring in more money through door donations, raffle tickets, white elephant sales, pins and hats. I am currently looking for a Cajon patch so I can have it scanned and sent to the patch maker. When we do get a good copy we will have them made as soon as possible so that we may sell them to raise capitol. I also will have a limited amount of hats made with the patch on it also.

Third a closer relation with the Region: I will be working with Bob Reves the editor of the Order Board to get information on other activities in the region to you so you could make plans to attend meets in other areas.

And fourth the convention: If you have gone to a regional convention in the past and had a great time make plans now to come to the Cajon convention in 2001 you will not be disappointed. Plans are to have the best of everything- prototype tours- train rides- contests- clinics- and don't forget it will be in Las Vegas!

Thank you for your support. 🚗🚗

# Division Directors



## DAVID COX, MMR

david23star@1stnetusa.com

I am seeking a second term as Los Angeles Division Director. I am sure most of you know me as I have been very active in the achievement program, earning an MMR in 1996, and several additional certificates since. I am also the Chairman of the PSR 2000 Convention to be held in Torrance in September of 2000.

As a life member of NMRA I would like to make the organization as responsive and member friendly as possible. I think the members deserve prompt, courteous, and accurate responses from our elected officers and appointed volunteers. This is a fun hobby and I will try and keep it that way.

Thank you for your vote. 🚂



## CHUCK HART

charles.v.hart@cpmx.saic.com

Chuck Hart resides in Poway, CA. Chuck is the current Director of the San Diego Division. He is a member of the San Diego Society Of N Scale (SDSONS), the Short Trak "N Railroad Club, and is serving his sixth year on the Board Of Directors of the San Diego Model Railroad Museum.

Chuck is a life member of the NMRA, the Pacific Southwest Region, the Pacific Coast Region and the San Diego Model Railroad Museum.

Chuck says: As your current San Diego Division Director I will, with your vote, continue to do all I can to further the advancement of the San Diego Division. As I have been doing, I will work beyond the responsibilities as outlined in the Manual of Operations for the Director position to ensure the growth and well being of the San Diego Division.

I have heard from many of you in the past few years that a need exists for a change to improve how the Division is represented at the Region level. I have started some of the changes that I think are most beneficial to the San Diego Division and I would like to continue that work. I believe that a change for the betterment of the San Diego Division is possible and with your help, those ideas and suggestions you have requested can be obtained.

I would like to have your vote for the San Diego Division Director.

Thank You. 🚂

**Editors Note:** These statements were submitted by the individual candidates for Director for their respective PSR Divisions and, except for being subjected to a spelling check program, were not edited in any way. Please use the pre-addressed ballot inserted in this issue of the *PSR Dispatch* to vote the candidates of your choice.

# DIRECTORY OF LEADING MODEL RETAILERS AND MANUFACTURERS IN THE PACIFIC SOUTHWEST REGION

## Lindsay Smith, Member Aid

wlindsays@compuserve.com

b indicates *NMRA Bulletin* advertiser.

c indicates LA Division *Coupler* advertiser.

P indicates a PSR Showman.

m indicates San Diego Division *Mail Hook* advertiser.

A&B Industries. (Foam Lined Train Boxes) 9233 N. 12th Ave., Phoenix, AZ 85021 (602) 997-5837 fax (602) 997-5925

A-Line, Proto Power West. (HO) Vehicle and Intermodal Models, HO Motive Power. Joe Delia, Jr. P. O. Box 2701, Carlsbad, CA 92018 (760) 721-3393 fax (760) 721-3373

bc All Aboard Model Railroad Emporium. (All Scales) 3867 Pacific Coast Hwy., Torrance, CA 90505 Mike Smith. (310) 791-2637 Mon. - Thur. 10 - 7. Fri. 10 - 8. Sat. 10 - 6. Sun. 10 - 5.

m All Aboard Trains. (All Scales) 7750 Convoy Ct., San Diego, CA 92111 (619) 279-0876.

bc Allied Model Trains. (All Scales) 4411 S. Sepulveda Blvd., Culver City, CA 90230 Allen Drucker. (310) 313-9353

All Scales Hobbies. (All Scales) 4640 E. Flamingo Rd. Ste. 106, Las Vegas NV (702) 456-8766

Alpine Division Scale Models. PO Box 641154R, West Los Angeles, CA 90064. (562) 860-6060 or fax (562) 860-7800. MSD1962@earthlink.net. Also see:

The Innovator Line.

Orange Vista Traction Products.

An Affair With Trains. 2615 W. Bethany Home Rd., Phoenix, AZ 85017 One block west of I-17. Closed on Tuesdays. Paul Gosch (602) 249-3781

Arizona Rock & Mineral Company. P. O. Box 567, Paulden, AZ 86334-0567 azrock@northlink.com: (800) 310-3729, (520) 636-9275, fax (520) 636-9275

Arizona Trains and Hobbies. (Wholesaler) 5584 E. La Palma Ave., Anaheim, CA 92807 (714) 779-9893 fax (714) 779-6708

c Arnie's Trains. (All Scales) NEW 6452 Industry Way, Westminster, CA 92683 Greg and Jerry Arnold, Steve Handy (714) 893-1015

Arizona Trains. (Lionel) 2420 N. Treat, Tucson, AZ 85716. Ken Scharman. (520) 325-2321 fax (520) 325-2905

Arrowhead Scale Models. (HO & N) 638 Holiday Dr., Prescott, AZ 86303, Randy Brown. (520) 445-8409 (9607)

Athern, Inc. [www.athern.com](http://www.athern.com) 19010 Laurel Park Rd., Compton CA 90220 Michael Hopkin, 105656.256@compuserve.com (310) 631-3400 fax (310) 885-5296

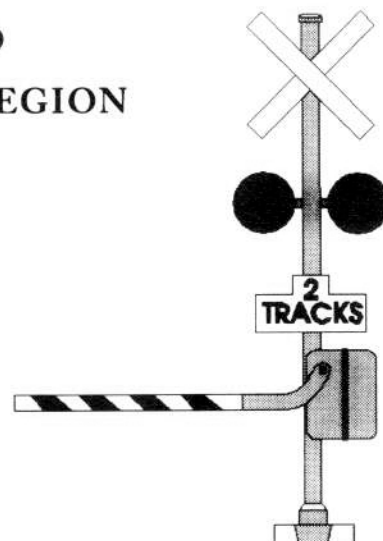
B&R Railways. (All Scales) 3450E S. Procyan, Las Vegas, NV (702) 251-5787

Barnes Trains. (G Scale) 6010 N. Mardelle Circle, Tucson AZ 85704 Patricia Barnes (520) 296-8570 fax (520) 742-39-99, orders only (800) 594-0725.

Barry's Big Trains. 6275 So. Harrison Dr. #23, Las Vegas NV 89120 Barry Olsen (702) 795-7965

Best Track. (Peco track) [www.best-track.com](http://www.best-track.com) 74-940 U. S. Highway 111, Ste. 431, Indian Wells, CA 92210 (760) 346-1298 fax (760) 341-7011

Big Y Yardage Outlet. (All Scales) 4877 Arrow Highway, Southwest corner Arrow Hwy and Monte Vista, Montclair, CA (909) 624-8201



c Bill's Narrow Gauge Shops. 433708 N. Heaton Ave., Lancaster, CA 93554 Bill Shiverdecker (805) 942-2168

Billie's Pet and Hobby Shop. (All Scales) 3518 E. Route 66, #121, Flagstaff, AZ 86004 Charles W. Gibson

Black Tree Productions. (videos) 18620 North 43<sup>rd</sup> Street, Phoenix, AZ 85050-3342; pmei@futureone.com (602) 569-6198; fax (602) 404-9246

m Branchline Hobbies. (HO & N) 250F Crest Street, Escondido, CA 92025 Daniel Raitz and Mike Champion (760) 489-5020, fax: (619) 489-5057

Brass Locomotive Company. 1790 La Costa Meadows Dr. #100-D, San Marcos, CA 92069 760 736 9284 or fax 760 736 9283

Bridge Masters (Garden structures) 1528 Riverview Ave, Orange CA 92665 Jeff 714 998 8386, Gary 714 951 0725 fax 714 283 5319

Bridgewerks. (Garden power control and structures)

[www.bridgewerks.com](http://www.bridgewerks.com) 27068 LaPaz Rd., #435, Laguna Hills CA 92656 714 831 9351, 1800 988 9997 fax 714 362 9751

Burbank's House of Hobbies. (All Scales) NEW 911 S. Victory, Burbank, CA 91506 818 848 3674

m C & C Train Repair. 4186 Adams Ave., San Diego, CA 92116 619 281 1284

Cajon Rails. Books, Videos, Wearables, etc. 101 W. Central, Unit B, #125G, Brea, CA 92621 Greg Taylor,

WBYG55A@prodigy.com. 909 529 0436, fax 909 394 1053

California Freight & Detail Co. (N & HO) 12652 Pleasant Pl., Garden Grove, CA 92641

California Model Co. (buildings ex Suydam) 1426 South Ritchey #A, Santa Ana, CA 92705

Central Valley. (HO plastic structures) 1203 Pike Lane, Oceano, CA 93445

Challenger Productions. (Videos) PO Box 824, San Jacinto, CA 92583. Train @Inland.net, 1 800 770 7680

Classic Hobbies & Toys. (All Scales) 18928 Ventura Blvd., Tarzana, CA Jay Rapogle 818 699 7077

Classic Hobbies & Toys. (All Scales) 17632 Chatsworth St. Granada Hills, CA 818 368 7371

Classic Trains. (All Scales) [www.classictrains.com](http://www.classictrains.com) 18927 Colima Road, Roland Heights, CA 91748-2942 By the California Supermarket next to Thrifty. 626 912 0774

Classic Trains International, Inc. (Brass - new and used) 650 N. Holiday Drive, Prescott, AZ 86303; David Cooke 520 771 9156, fax 520 771 8156

The Coach Yard. (HO) P. O. Box 593, Del Mar, CA 92014-0593 fax 818 796 7566

Con-Cor. (HO & N) [www.tucson.com/concor](http://www.tucson.com/concor) 8101 E. Research Court, Tucson, AZ 85710. [www.all-railroads.com](http://www.all-railroads.com) The file includes a list of Model Railroad Clubs, US and Foreign; E-mail: [jconway@azstarnet.com](mailto:jconway@azstarnet.com). 1 888 255 7688: 520 721 8939 fax 520 721 8940

Corona Flex. (S-Gauge Flex Track, HO cork roadbed) PO Box 1867, Corona, CA 91718, Jim Kluge (909) 735-3417

Coronado Scale Models. (Narrow gage, O scale) 1544 E. Cypress St., Phoenix, AZ 85006 Sheldon Schwedler voice/fax (602) 254-9656

Covina Hobby Center (Ed's Hobbies). (HO & N) 140 North Citrus Ave. Covina, CA 91723 (818) 331-1910

Craig's Hobbies. 6333 E. Broadway, Tucson, AZ 85710  
Craig Bennett

Craycroft Hobbies. 1618 S. Craycroft, Tucson, AZ 85711

Creative Railway Engineering. (HO lighting kits) 15176 Laverda Ln., Moreno Valley, CA 92551 (909) 243-8195 Fax (909) 243-83-34

Creative Screen Process, Inc. Silk screening. 555 E. Airline Way, Gardena, CA 90248 (310) 770-2302, (310) 532-2612, Peter Snell

Cresenta Valley Hobby & Craft. (All Scales) 2230 Honolulu Ave. Glendale, CA Fred Farias, Walt Williams (818) 957-1779

Culpepper Cattle Co. Fine Art and Lithographs. P. O Box 29083, Las Vegas, NV 89126 (702) 873-7696

Custom TRAXX. (HO, Traction) [www.trolleyville.com](http://www.trolleyville.com) PO Box 641175, W. Los Angeles, CA 90064-1175, [traxx@earthlink.net](mailto:traxx@earthlink.net). George L. Huckaby, Jr. V/fax (310) 475-5597

D & J Miniatures. (All Scales, Structure kits) 6409 Estes Ct., Riverside, CA 92506-3111. Dave and Jan Ham. (909) 686-0341 fax (909) 686-3963

Dale Keisher (Railroad watch dealer/ collector) 714 675 4309

Daylight Distributors. (Fleischmann HO & N) 4411 Sepulveda Blvd., Culver City, CA 90230 (310) 313-9370

deluxe innovations. (O & N Scale) P. O. Box 4213, Burbank, CA 91503-4213. Flemming Nielson, George Johnsen 104333.2002@CompuServe.com (818) 848-DLUX fax (818) 848-1667

Details West. P. O. Box 61, Corona, CA 91718 Paul Federiconi, 73757.3473@compuserve.com

DLA. (HO and DDC) [www.modeltrainsltd.com](http://www.modeltrainsltd.com) 28130 Ave. Crocker #303, Santa Clarita, CA 91355 (888) 655-8729

DVA dental ventures of America, Inc. (CA Glue syringes) 217 Lewis Court, Corona, CA 91720 (909) 270-0606 or (800) 228-6696

Electric Norman. (Toy Train Parts and Repairs) PO Box 1026, Santa Paula, CA 93061-1026. Norman and Blanche Keller. (805) 933-2825

The Electric Train Company. (All Scales) 16206 Hawthorne Blvd., Lawndale, CA 90260 Don Crissy. (310) 370-3839

European Train Enthusiasts (ETE). LA-San Diego Chapter. c/o Errol Kubicki, 8342 Elkhorn St., Lemon Grove CA 91945 \$21/yr.

Fine N-Scale Products. P. O. Box 2687, San Pedro, CA 90731; (310) 521-0230

FRANK "The Trainman." (All Scales) 4233 Park Blvd., San Diego CA (619) 295-1611

The Freight Yard. (HO & N) 930 Orangethorpe Ave., Suite C, Anaheim, CA 92801 Marten Cohen (714) 680-4791 fax (714) 680-3811

Friend's Right Track Hobbies. 1818 E. Main St. Ventura, CA (805) 643-5338

FX Express. (Special effects) 29039 Sam Place, Santa Clarita, CA 91351 Kevin Burke. (805) 251-2071

Gary Raymond Metal Wheels. (LGB) PO Box 1722, Thousand Oaks, CA 91358

Gerry's Trains & Tools. (All Scales) 7337 E. Indian Bend Rd., Scottsdale AZ Located within Mc Cormick Park. Gerald F. Klei (480) 991-2536

Gold Coast Station. (G Scale) 4532 Telephone Rd. #113 & 114, Ventura, CA 93003. Hans-g Kahl phone and fax (805) 339-0379. 10:30 - 5 except Sunday

Golden Rail Video. PO Box 10474, Glendale, CA 91209 (888) 844-4449

Golden West Books. PO Box 80250, San Marino, CA 91118-8250

Grandpa's Antique Hobbies. 205 E. Second St., Pomona CA 91766 1950's model shop. (909) 629-5854

The Great Train Store. (All Scales) Ramada Express Hotel and Casino, Laughlin, NV (702) 298-6235 138 Horton Plaza, San Diego, CA (619) 233-3012

Havasu Hobbies. (All Scales) 1850 McCulloch Blvd. B2, Lake Havasu City, AZ 86403 John and Nancy Schroeder

Herb Deeks — Models. (Scale Miniatures, 1/24 mine train runs on HO track) 1516 E. Santa Ana St., Anaheim, CA 92805 Herb Deeks (714) 774-7326

Heun Enterprises. *Moveable Miniatures Glue.* PO Box 70087, Riverside, CA 92513 Joe and Sherry Heun (909) 351-0436

High Country Scenery. (All Scales) PO Box 8301, La Crescenta, CA 91224 Moe and Kathy Geoghegan. [HCScenery@aol.com](mailto:HCScenery@aol.com) (818) 957-1779 (702) 682-1506



Manufacturers - continued from page 15

Highliners. HO F3, F5, F7, F9 A & B units. PO Box 22435, San Diego, CA 92122

Hillcraft Model Builders. (G Scale buildings) 2142 Oak Canyon Ln., Chino Hills, CA 91709 voice (909) 393-0645, fax (909) 393-2488

Hobbies and Collectibles. (New and used) 2808 W. Lincoln, Anaheim CA 714 952 2115

Hobby Bench #1. (All Scales) 8058 N. 19th Ave., Phoenix, AZ 85021 John Determan

Hobby Bench #2. (All Scales) 4550 E. Cactus Road, Phoenix, AZ 85032-7719

Hobby Bench #3. (All Scales) 4240 Bell Rd, Glendale, AZ 85508 (602) 547-1828 Al Weiss (602) 547-1828

Hobby Central. (All Scales) 43255 Pacific Coast Hwy #107, Dana Point CA 992686

Hobby Depot. (O, HO, N) 216 W. Southern Ave. Tempe, AZ (480) 968 1880; fax (480) 968 1192

c Hobby House, Inc. (HO & N) 17721 Vanowen St., Reseda, CA 91335 Jay Repogle (818) 609-1968

The Hobby Shop. (HO & N) 723 E. Gurley, Prescott, AZ 86301 Joe Candillere (520) 776-9629

Hobby Town USA. (All Scales) locations:

3121 N. Rainbow Blvd. Las Vegas, NV (702) 655-0693

5085 W. Sahara, Ste. 134, Las Vegas, NV (702) 889-9554

3131 Stockton Hill Rd., Kingman, AZ (520) 753-4113

4431 S. White Mountain RD. Show Low, AZ 85901 Richard & Vicki Andresano

1102 E. 22nd St., Tucson, AZ 85713 Adam Crippen

bc Hobby Warehouse. (All Scales) 4118 East South Street, Lakewood, CA Ken McClure (562) 531-1413

Hot Wire Foam Factory Inc. 300 North G Street, Lompoc, CA 93436. (800) 822-0522 (9811)

c HY-NARK Co. (Screen printing) 16617 S. Normandie #E Gardena CA 90247 Tom Arzonian (310) 532-7511 fax (310) 532-14-06.

Imagination Unlimited. (All scales) 4934 E. Tropicana, Las Vegas NV (702) 434-5696

Inland Hobbies. General Hobbies and Trains. 10115 Hole Ave., Riverside, CA Mon-Sat 10-7, Sun 12-6. (909) 688-6013

b Innovative Train Technology. (Sound) PO Box 5042, West Hills, CA 91308 (818) 992-6124 fax (818) 992-6862

The Innovator Line. Walk around throttles. PO Box 641154R, West Los Angeles, CA 90064. MSD1962@earthlink.net. (562) 860-6060 or fax (562) 860-7800

J & F Display Cases. (All Scales) P.O. Box 9061, Torrance, CA 90508 (310) 320-7923 fax (310) 320-2281

J & J Trains, Inc. (Gauge 1 Repair and Sales) 5348 Vista Del Mar, Cypress, CA 90630, John and Jeanette Wieland Phone/fax (714) 828-1537

JV Models. PO Box 700, Artesia, CA 90702 Ron Vanden Bosch Phone/fax (310) 866-1297

LGB of America. 6444 Nancy Ridge Rd., San Diego, CA 92121 LGBanswers@aol.com & 72401.1550@compuserve.com (800) 669-0607

Lark Discount Trains. (All Scales) Send SASE. PO Box 33891, Granada Hills, CA 91394

Laser Structures Limited. (HO) 3970 N. Hwy. 89, Prescott, AZ 86301 (520) 778-0374 fax (520) 778-7448

Lionel and MTH Electric Trains. Jon Cady. 6587 Joshua Street, Oak Park, CA 91301-1307 voice (818) 991-6617, fax (818) 597-1916

c The Little Depot at Hobby City. (All Scales) 1238-A South Beach Blvd., Anaheim CA 92804 (714) 828-5080 fax (714) 995-2374

b Longs Model Railroad Supply inside Longs Drug Store. (All Scales) Mon- Fri. 8 - 8. Sat. 8 - 5. Sun 10 - 5. 25070 Alessandro Blvd., Moreno Valley, CA 92553. (Corner of Perris Blvd.) Orders, (800) 888-3557 fax (909) 242-0264. Q&I (909) 242-5060

b Loy's Toys. (DCC) [www.mcetech.com/loystoys](http://www.mcetech.com/loystoys) PO Box 32, La Mirada, CA 90637-0032 LoysToys@compuserve.com & 103517.2775@compuserve.com Loy Spurlock Phone/fax (562) 944-1069

Main Street Heritage Models. (HO Urethane Building) 11259 E. Via Linda, #100-130, Scottsdale AZ 85259

Marland Mold West, Inc. *ClampNcut* tool. 1441 Pomona Rd. #3, Corona, CA 91720. (909) 734-9622

Marty's Hobbies. (All Scales) 1728 Moorpark Dr., Thousand Oaks, CA (805) 497-3664/0346

Master Creations. (HO, Hon3) [www.mc-usa.com](http://www.mc-usa.com) 3970 N. Hwy 89, Prescott, AZ 86301 (520) 778-0374 fax (520) 778-7448

McKenzie Locomotive Works. 3735 W. Wethersfield Rd. Phoenix, AZ 85029 John Determan (602) 938-7829

Mesa Custom Model Railroads. [mesacmrr@worldnet.att.net](mailto:mesacmrr@worldnet.att.net) P. O. Box 7142, Mesa, AZ 85216-7142 (480) 986-4815

b Microscale Industries, Inc. (Decals for All Scales). [www.microscale.com](http://www.microscale.com) PO Box 11950, 18435 Bandilier Circle, Fountain Valley, CA 92708.

[microscale@aol.com](mailto:microscale@aol.com) John Sheridan. Joie Krasel, owner. (714) 593-1422; fax (714) 593-1432

Mike Blazek (Narrow gauge plans) 3351 Nevada Ave., Costa Mesa, CA 92625

Model Railroad General Store. (HO & On3) P. O. Box 10131, Burbank, CA 91501-0131, (818) 841-6528 fax (818) 753-81-75

Model Railroader Magazine. [www.kalmbach.com/mr/modelrailroader.html](http://www.kalmbach.com/mr/modelrailroader.html)

Model Railroad News. (541) 955-1096 fax (541) 955-03-46. AOL = GO MRN, 70007,3615@compuserve.com,

[MRN@MAGICK.net](mailto:MRN@MAGICK.net)

Model Vehicles Unlimited. Jack Peters 310 397 2849 or Rich Johnson 310 454 8075, P. O. Box 2118, Culver City, CA 90231

Morgan's Big Trains Emporium. Big Trains of Course! 7390 Center Ave., Huntington Beach, CA 92647 Vincent Morgan (714) 892-3688





c mr. fixit. Gordon Idlof, Model Railroad Mechanic. 2460 Lake Ave., Altadena CA 91001 (800) 759-8888 fax (818) 794-7530  
p M-Tec. Trees and scenery. P. O. Box 292811, Sacramento, CA 95829-2811 (916) 373-9974, fax (916) 373-9976

M. V. Products. Realistic lenses for models. P. O. Box 6622, Orange, CA 92613-6622

My Hobby Shop. (All Scales) 2550 W. Highway 89A, Sedona, AZ 86339 Dick Scalf

Narrow Gauge Junction. (G scale) 250 W. Whittier Blvd., La Habra, CA 90631 (562) 694-0598

North San Diego County Modular NTRAK Club. 1440 Oak Dr. #C11, Vista CA 92084 Meets first and third Thursdays. Contact Paul Schmitt (760) 940-8000, flyers@inetworld.net

Northwestern Arizona Models. (All Scales) 2475 Airfield, Kingman AZ, Art and Sondra Hendriksen (520) 753-1008 fax (520) 753-5659

N-2-IT - Leo Von Allen. (N) 1739 E. Broadway # 151, Tempe, AZ 85282-1629

On Track Productions, Inc. The Big Train Show, [www.microcat.com/bts.htm](http://www.microcat.com/bts.htm) 23024 Lake Forest Dr., Suite "H", Laguna Hills, CA 92653

Orange Vista Traction Products. PO Box 641154R, West Los Angeles, CA 90064. MSD1962@earthlink.net (562) 860-6060 or fax (562) 860-7800

Original Overhead Railways. 25672 Taladro Cr. Unit A, Mission Viejo CA 92691 Joe Black (714) 768-8021

bc Original Whistle Stop. (All Scales) [www.thewhistlestop.com](http://www.thewhistlestop.com) 2490 East Colorado Blvd., Pasadena, CA 91107 Fred Hill, Brian Brooks Mon. - Fri. 10 - 6, Fri. 10 - 9, Sat. 10 - 6, Sun. 11-4. (626) 796-7791 fax (818) 796-7566

Pacific Coast Garden Railway Supply. (G structures and Accessories) 928 Carissa Court, Camarillo CA 93012 Randy Bryie (805) 388-3922

Pacific Coast Hobbies. (All Scales) 6667 Indiana Ave. Suite F, Riverside, CA (909) 341-0180

c Palmdale Hobbies. (All Scales) 2127 E. Palmdale Blvd., Palmdale CA 93550 Bill Winans (805) 273-6229

Pegasus Hobbies. (N-HO-O) 6554 Greenleaf, Whittier, CA 90601 (310) 907-4663

Pegasus Hobbies. (N-HO-O) 5505 Moreno Ave., Montclair, CA (909) 982-6507

The Parker Co. (G Turnouts) P.O. Box 1546, Camarillo, CA 93011, (805) 388-1380 fax (805) 987-6432

Pentrex. Videos, Magazines, Books. 2652 East Walnut St., Pasadena, CA 91107; P.O. Box 94911, Pasadena, CA 91109-4911 (800) 950-9333; (626) 793-3400, fax (626) 793-3797 Mike Clayton, Owner. pentrex@execpc.com, 76307.1175@compuserve.com, pentrex@aol.com

Peterson Hobbies & Crafts. 3262 B. Civic Center Dr., North Las Vegas, NV (702) 649-3311

P.J.'s Originals. (Custom scenery items) 13041 Orange Ave., Chino, CA Pamela J. Reynolds (909) 628-9467

Plastruct Inc. (Plastic materials) 1020 South Wallace Place, City of Industry, CA 91748

Prestige Hobbies. (All Scales) 1238 S. Beach Blvd., Anaheim, CA 888 886 5778

Quality Time Trains. (All Scales) 707 Escondido Ave. #104, Vista, CA 92084, Steve Haeming (619) 758-5557

m Rail Line News. 7720B El Camino Real #463, Rancho La Costa, CA 92009. Richard Bale. railnews@aol.com Phone/fax (760) 944-9215

R&G Railroad Co. (Wall track systems) 15314 Black Shadow Dr. Moreno Valley, CA 92551

Rails West, Ltd. Mc Cormick Railroad Park, Aquila Depot. 7303 E. Indian Bend, Scottsdale, AZ 85250 (480) 991-3995 Fred Rozum  
Real Road™ Accessories (Electronic Special Effects) 88866 Summerhill Point, Alpine CA 91901-2779 Chuck Murray (619) 445-5145 fax (619) 445-5305

n Red Cap Lines. (HO Passenger Interiors) P. O. Box 6457, Burbank, CA 91510 (818) 362-5313

mp Reed's Hobby Shop. (All Scales) 8039 La Mesa Blvd., La Mesa, CA 92041 Mike Pfulb (619) 464-1672 trains@netcom.com

Robel Enterprises. (Tools) 2405 Chandler, #2, Simi Valley, CA 93065 Robert E. Leiser

Rocking and Rolling. (All Scales) 14850 N. Cave Creek Rd., Phoenix, AZ 85032 Roger & Jeanette Champagne

Rodman & Company, Inc. (Silicon carbide tools) 2823 N. San Fernando, Blvd., Burbank, CA 91540 (Between Hollywood Way and Buena Vista) (800) 228-1806, (818) 846-9494 fax (818) 846-9681

Roecks Railroad Concepts.

[www.Rrconcepts.com](http://www.Rrconcepts.com) (Garden Automation) 1357 Hodges Rd., Oceanside CA 92056 rrc@cts.com (619) 840-5556

Ron's Art Graphics. (prints) 5436 E. Cambridge, Phoenix, AZ 85008 Phone/fax (602) 840-6243

Ron's World. (All Scales)

[www.ronsworld.com](http://www.ronsworld.com) 241 Avenida Del Mar, San Clemente, CA (949) 361-5596

Roy's Train World. (All Scales) 1033 S. Country Club Dr., Mesa, AZ 85210 Tim

Honetschlager (480) 833-4353

c The Roundhouse. (All Scales) 12804 Victory Blvd., North Hollywood, CA Alan and Judy Keesling (818) 769-0403

b S&S Hobby Products. (N, HO & O) PO Box 2724 Garden Grove, CA 92642. Details in etched brass

Saguaro State Models. (Signs) 10520 W. Avalon Dr., Avondale, AZ 85323 James Cooley

SAN-VAL Discount, Inc. (All Scales) 7444 Valjean Ave., Van Nuys, CA (818) 786-8274

Satellite City (Hot Stuff glue products) P. O. Box 836, Simi, CA 93062 (805) 522-0062

The Scale Card. (All scale rulers) PO Box 1078, Dept. C, Highland, CA 92346-1078 Jose Lopez, Jr. (909) 864-4134

Scale Steam Pictorial. (Live Steam) Bob Cummings *The Silverwood*, PO Box 400036, Hesperia, CA 92345



Manufacturers - continued from page 17

Scroll America. (Hegner saws) 10373 Trademark, Unit #B, Rancho Cucamonga, CA 91730 (909) 980-0367 fax (909) 980-8889

Showcase Miniatures. (N Scale structures) P. O. Box 753, Cherry Valley, CA 92223 (909) 845-9914

Silver Ridge Mining Co. (G-Scale Garden Railroads) 4014 E. Holmes Ave., Mesa AZ 85206 Allen Roden. Phone/fax (480) 854-0418

Silverton Specialties Co. (Cast Belt Buckle) 2701 N. Seventh Ave., Phoenix, CA 85007

Small Treasures. (All Scales) 23528 Calabasas Rd. Calabasas (Old Town) 818 224 5288

Snowcase Miniatures. HO & N structures and vehicles. PO Box 753, Cherry Valley, CA 92223, Joe Warren (909) 845-9914, fax (909) 849-2968

Sonora Software, Inc. 4234 Caminito Pintesresco, San Diego, CA 92108 (619) 282-7006

SoftVue Inc., [www.hobbytime.com](http://www.hobbytime.com) Internet advertising. 11211 Holmes Ave. Mira Loma, CA 91732.

Speed, Direction and Sound, Inc. (ProSound® throttle and sound System) [www.members.aol.com/rgs455/sds.htm](http://www.members.aol.com/rgs455/sds.htm) 1840 E. Warner Road, #A105 - 260, Tempe, AZ 85284 (480) 705-4544

Stewart Locomotive Works. (All Scales) 2722 E. Bighorn Ave., Phoenix, AZ 85048-8984 Don Stewart (480) 759-5019 fax (480) 579-7574

Stoney Mountain Miniatures. (All Scales)  
[www.stoneymtnclassic.com](http://www.stoneymtnclassic.com) Scenery and unique detail items. 31583 Suite C, Castaic Road, Castaic, CA 91384. Roger or Lindy. (805) 257-7983

Suncoast Models. (HO, O buildings) P. O. Box 700, Artesia, CA 90702

T.M. Marketing. P. O. Box 48462, Los Angeles, CA 90048 A size blank decal sheets.

Tascione. Repair pocket (Railroad) watches. [www.tascione.com](http://www.tascione.com) P. O. Box 1983, Apple Valley CA 92307 (800) 853-6553

Taurus Products. (All Scales) PO Box 6534, Orange CA 92667. Kits and details. Classic Miniatures

Telemedia Productions. (All Scales) High resolution video camera in a model car. 2099 Glenbrook Ave., Camarillo, CA 93010 (800) 668-9246 or (805) 484-1344

The Tender Case. (Wall cases and railroadiana) 812 Aloha St., Camarillo CA 93010 (800) 851-5994.

Terrain for Trans. (HO Layout) Box 60456, Pasadena, CA 91116-6456

ThinFilm Decals. PO Box 70323, Pasadena, CA 91117-0323 fax 626 584 5902

The TOOL MAN. [www.hobbytools.com](http://www.hobbytools.com) Billy and Rose Marie Carr. 7621 Lake Highlands Dr., Fort Worth TX 76179 voice mail and pager (899) 652-0704

The Toy Train Shop. (All Scales - O Specialists) 1829 W. Lincoln, Anaheim, CA 92801 (714) 991-1040

m Trains Are Good!. [www.trainsaregood.com](http://www.trainsaregood.com) (RR gifts and toys) 2522 Congress St. (Old Town), San Diego, CA 92110. Rob Freeburn Orders (800) 642-9054, (619) 294-8372, fax (619) 294-3312

b Train Exchange. (All Scales) 6008 Boulder Hwy., Las Vegas, NV 89122 (702) 456-8766

The Train Crossing. (All Scales) 1089-C Baker Street, Costa Mesa, CA 91790 (714) 549-1596

Trains & Treasures. (All Scales) 9674 Monaco Blvd., P.O. Box L, Arizona City, AZ 85223-2500. Sam & Shirley Schreiner. (520) 466-5870

The Train Shack. (All Scales) 1030 N. Hollywood Way, Burbank, CA 91505 Gary Keck. (626) 842-3330 or outside 626/818 area code, (800) 572-9929

c Train Stop. (All Scales) 211 W. Bonita Ave. San Dimas, CA 91773 Paul Kirby. (909) 599-2602

Train Terrain Products, Inc. (HO, N & Z) Box 1960, Burbank, CA 91507. Molded plastic layout modules

c TrainTown. (All Scales) 303 S. Diamond Bar Blvd., Diamond Bar, CA 91765 East of K-mart, Rand Jackson (909) 612-5781

The Treasure House. (All Scales) 15211 N. Cave Creek Rd., Phoenix, AZ 85032 Nicholas and Peter Atonna (602) 867-4776

Tucson Hobby Shop. (HO, N & O27) 5637 E. Speedway, Tucson, AZ Graham Whittaker (520) 722-1931

Sun-N-Sand MRC. [www.getnet.com/~dickg/ntrak/sunsand.html](http://www.getnet.com/~dickg/ntrak/sunsand.html) 7301 E. Indian Bend Rd., Scottsdale AZ 85250. dickg100@AOL.com or dickg@getnet.com

T&S Express. (Gifts) [www.tnsxpress.com](http://www.tnsxpress.com) Terry Adams (mail only) 505 E. Windmill Lane #1B205, Las Vegas, NV 89123 (702) 683-2304 noon to 5PM Central Time

Valhalla Video. 1100 Irvine Blvd., #325, Tustin, CA 92680 714 544 2714 valhalla\_video@prodigy.com

Valley Hardware. (G & O scale and hammers!) 612 S. Myrtle, Monrovia CA 91016 (626) 359-2529

Valley Car Works, (G & O) P. O. Box 19084, San Diego, CA 92159; (619) 449-3545

Valley Train Station. (Garden Scale) 3811-B Schaefer Ave., Chino, CA 91710-5400 Ask for Ron or John. Message (909) 902-5350, voice (909) 902-5351, fax (909) 902-53-52 Tu - Sa 10 - 6

Vulture Models. (O) Tom Fogle & Jack Speer, 2923 W. Augusta Ave., Phoenix, AZ 85051 (602) 995-2639 fax (602) 995-86-60, Granite Bay, CA (916) 791-7072 fax (916) 791-1084

Westbahn Model Railways. (European) 3805 Topaz Lane, La Verne (909) 596-2032, (909) 392-9761

Western Scale Models. (O, HO & S Superior Craftsmen Kits). PO Box 7074, 19441 Business Center Dr. #107, Northridge, CA 91327. (818) 341-7862; fax (818) 368-7033

Westlake Publishing Co. Outdoor Railroader 1574 Kerryglen St., Westlake Village, CA 91361 (805) 379-0904

bmp Whistle Stop. (All Scales) 3834 Fourth Ave., San Diego, CA 92103 Between University and Robinson Streets Tues. - Thur. 10 - 6. Fri 10 - 8. Sat 10 - 5 Scott A. Rhodes Phone/ fax (619) 295-7340

Williams Bros., Inc. (HO and N) [www.trainweb.com/williamsbrothers](http://www.trainweb.com/williamsbrothers) 181 Pawnee St. San Marcos, CA 89133-5541

Wings, Wheels & Whistles. (All scales) 916 Army Rd., Barstow, CA (619) 252-8832

World Trains. (All Scales) 8311 E. Rosecrans, Paramount, CA 90723, John Marquardt (310) 408-0404 (310) 633-8060 fax (310) 406-0405

Yorba Toy Trains. (All Scales) 18300 Yorba Linda Blvd. #204, Yorba Linda CA 92686 (714) 961-8368



# STANDING STOPS

## Lindsay Smith, Member Aid

vlindsays@compuserve.com

There are always railroad exhibits open in the large communities. Some of them are in the following list for the NMRA PSR area. If we have not described an opportunity please contact me and provide a brief summary. We will include the information in a future issue of the *PSR DISPATCH* so that the membership can enjoy the activity.

Your nearby hobby shop can usually guide you in exploring more railfan opportunities. The model railroad clubs (MRC) usually welcome prospective members and out of town visitors to their weekly meetings.



### Antelope Valley MRC

[www.av.qnet.com:80/~mrfixit/mrr.html](http://www.av.qnet.com:80/~mrfixit/mrr.html)

44128 Fenhold St., Lancaster CA 93535. (805) 723-3736.

### Antique Gas and Steam Engine Museum

2040 N. Santa Fe Ave., Vista, CA 92083. 10 - 4 Everyday.

### Arizona Railway Museum

[www.siege.net/~arm/index2.html](http://www.siege.net/~arm/index2.html)

399 N. Delaware St., Chandler, AZ 85224. (480) 821-1108.  
Prototype equipment and small museum near Phoenix. 12 - 4  
Sat & Sun from Labor Day to Memorial Day. Bart Barton  
work (480) 413-3163; home: (480) 831-6520; or  
rjc600@email.sps.mot.com

### Arizona Model Railroading Society

Manistee Town Center, 19th & Northern, Glendale, AZ  
85301. John Nuss (480) 983-3945 or Ellie Barbieri (602) 494-  
7430 mail to 12430 N 19th Ave. #208, Phoenix AZ 85029

### Arizona Railroad Society

5221 W. Montebello Ave., Glendale, AZ 85301 Mon. 7:30  
P.M. E. Fisch, 5221 W. Montebello Ave. Suite 10, Glendale,  
AZ 85301

### Belmont Shore Model Club

[www.primnet.com/~schifer/bsl.html](http://www.primnet.com/~schifer/bsl.html)

Angel's Gate Park, 3601 Gaffey St. Bldg. 824, San Pedro.  
Dick Billings (310) 373-6658, Fred Smith (310) 377-4097.

### California Museum of Science and Industry

Was closed when the building was condemned for seismic  
safety in 1990.

### California Southern MRC

[members.gnn.com/foamer86/cslpage.htm](http://members.gnn.com/foamer86/cslpage.htm)

12140 E Firestone Blvd., Norwalk, CA. 1/2/block East of San  
Antonio. (562) 863-3156. Ken Eells (310) 863-4697, Ed  
Nordstrom (714) 525-4032. HO and HOn3. Tuesday 7:30.

### Citrus Empire MRC

Modular O gauge and permanent layout in Fairplex, Pomona.  
Business meeting, second Tues. 7:30 PM. Carl Schmitz (714)  
996-6434, Fred Townsend (714) 870-6083

### Coachella Valley Model RRers

[www.js-net.com/jhundley/](http://www.js-net.com/jhundley/)

Riverside Co. Fairgrounds, 43-714 Commanche, Indio CA  
92203-2630. Open House during the National Date Festival in  
February. (760) 347-6218 or jhundley@js-net.com.

### Cochise and Western Model Railroad Club

600 Fort Ave., Sierra Vista, AZ (just outside Main Gate of Ft.  
Huachuca). HO and N. Charles Cole (520) 458-8395 eve and  
Weekends, (520) 533-4065 days.

### Eastern Sierra MRC

226 Springside St., Ridgecrest CA 93555.

### Fairplex, Pomona CA See:

Citrus Empire MRC

Railroad and Locomotive Historical Society

Southern California Garden Railway Society

### Feather River N-Gineers & Tucson NTRAK

1545 S. Kolb Rd. Tucson, AZ 85710. Don Brown (520) 721-  
8939. Davis-Monthon AFB Recreation Center. Meeting  
Tuesday 8 PM. dbn160@azstarnet.com

### Fillmore and Western Railway Co.

[www.fishnet.net/~fwry](http://www.fishnet.net/~fwry)

351 Santa Clara Ave., Fillmore CA 93016 Real train excursions.  
Daytime and special events. Daylight excursions leave  
Fillmore's Central Park at 2:00 on Sat and 11AM and 2:00PM  
on Sun. Adults \$15.00; Senior \$12.00, Child (3-12) \$8.00. 1  
800 773-TRAIN or (805) 524-2546

### Foothill Model RR Club

HO and HOn3. 1648 N. Verdugo Rd. Glendale, CA 91208.  
Jim Jenson (818) 240-2491. Every Sat. 8-10 PM.

### Flagstaff MRC

Oak Creek SR 30 Box3, Flagstaff, AZ 86001 (520) 774-7589

### Gadsden-Pacific Division Toy Train Operating Museum

Foothills Mall, Ina and La Cholla, Tucson, AZ. Frank Shore  
(520) 297-5137, Bud Stewart (520) 749-0228

### Garden Railway at Fairplex or Ganesha Junction

See Southern California Garden Railway Society

### Glendale MRC

HO and HOn3. 619 Hahn Ave., Fremont Park. Sat. 10-4, Sun.  
1-4, & Monday 7:30. (818) 500-7229 or Bill Hoadley (818)  
846-0577.

### Grand Canyon Railway

[www.thetrain.com](http://www.thetrain.com)

Williams AZ. The finest way to see the Grand Canyon. Make  
reservations through your travel agent or auto club. I recom-  
mend the middle class fare.

Grandpa's Antique Hobbies

Seven days a week. 205 E. Second St., Pomona, CA (909) 629-5854.; fax (818) 332-2408. Large collection of vintage models and kits.

Group 160 - Burbank NTRAK

P. O. Box 6965, Burbank CA 91510-6965

Hemet-San Jacinto RRC

1045 Dixie Dr., Hemet, CA 92543

Highland Park Society of Model Railroad Engineers, Inc.

854 East Broadway, San Gabriel, CA 91776 (818) 285-1031. Meets Wednesday evenings 7 - 10. Van Facko.

Lomita Railroad Museum

2137 West 250th St., Lomita. Wednesday through Sunday 10 - 5. 310 326 6255. Off Pacific Coast Highway, North on Narbonne, East on 250th St.

Lompoc Valley MRR Soc

Tues. & Fri. 7-11:30 PM, Sat. 11-3. Jim Scott (805) 736-1480

Los Angeles East Valley Lines

N Scale Griffith Park, Travel Town every Saturday and Sunday 11 to 3. Contact Lowell Majors, PO Box 5732, Glendale, CA 91301. (213) 662-8339

Los Angeles Live Steamers

Griffith Park next to Travel Town. Public rides on Sundays. (213) 669-9729

Los Angeles MR Society

[www.trainweb.com/rrclubs/lamrs/](http://www.trainweb.com/rrclubs/lamrs/)  
HO and HOn3. (Ex-PCTC) 14005 S. Crenshaw Blvd., Hawthorne, CA. Tuesday 7:30. Nick Barone (310) 676-2523 or Andy Hunter (310) 542-3544

Mc Cormick Railroad Park

Indian Bend and Scottsdale Road, Scottsdale AZ. See Rails West. Ltd. and Gerry's Trains and Tools.

Sun-N-Sand MRC

[www.getnet.com/~dickg/ntrak/sunsand.html](http://www.getnet.com/~dickg/ntrak/sunsand.html)  
7301 E. Indian Bend Rd., Scottsdale, AZ 85250. dickg@getnet.com

METROLINK

Los Angeles area. Call 1 800 371 LINK for information, fares and commute planning.

Model Train Association (MTA)

Meets fourth Friday of each month except May and December. In May, fourth Saturday Big Roundhouse Meet. In December, Christmas Meet is held on the third Saturday. Women's Club of Bellflower, corner of Oak and Clark Streets. Jerry Keys (714) 281-3600 or M. T. A., P. O. Box 3302, Orange, CA 92857

N'GINEERS MRC

11901 Easy Way, Garden Grove, CA 92640

Norco Railway

38871 Valley View, Norco, CA 91760. (909) 737-3668

North County Modular Railroad Society Open House

Every Tuesday 7 - 9 PM 3529 Cannon Rd. #2H, Oceanside CA 92056. Call Carl Chapman (619) 757-1752, Tom Gallagher (619) 732-3593

Old Pueblo Trolley

[www.azstarnet.com/~bnoon/opthome.html](http://www.azstarnet.com/~bnoon/opthome.html)  
Tucson, AZ . Bruce Noon

Orange Coast MRC

HO. European Cycle Specialists, 13851 A Better Way St., #D, Garden Grove, CA. Steve Carrol, (714) 530-2711. 1st and 2nd Thursdays 7:30

Orange County Model Engineers

Live Steam in Fairview Park, Costa Mesa. 3rd weekend of the month. I-405 to Harbor. South to Adams. West 1 mile to Placentia Ave. South to city park. 714 54-TRAIN (548-7246), Box 3216, Costa Mesa, CA 92628

Orange County Modular Railroaders

[www.primenet.com/~stibb/ocmr.htm](http://www.primenet.com/~stibb/ocmr.htm)  
PO Box 3577, Fullerton, CA 92634

Orange Empire Railroad Museum

[www.oerm.mus.ca.us/](http://www.oerm.mus.ca.us/)  
2201 South A St., Perris CA. Every weekend 11-5. Watch for special events and fares. (909) 657-2605 (tape); (909) 943-3020 (person). 17miles South of Riverside on I-215. At Perris,

take exit to Route 74 West. Follow Route 74/4th Street west for 1 mile. At "A" Street turn left. Go south for 1.5 miles.

Pacific Railroad Museum

Santa Fe, San Dimas Depot. Bonita and the Santa Fe right of way in San Dimas, CA. Across the street from the Train Stop. Wed and Saturday 10 to 5. Restored to display the AT&SF station as it was in 1934 by the Pacific Railroad Society.

Pasadena Model Railroad Club

[www.fileshop.com/personal/rrclubs/pmrc.html](http://www.fileshop.com/personal/rrclubs/pmrc.html)  
HO. 5458 Alhambra Ave, Los Angeles CA. 90032 Tues. 7:30 - 10:00 and Sat. 1:00 to 5:00 and 7:00 to 10:00. Business meeting 1st Tuesday, Operating 2nd Tuesday and Saturday. 5,000 square feet. Memberships open. Club phone Joe Behan (818) 284-2664

Pomona Valley Model Railroad Club

HO, HOn3. 132 E. First St., PO Box 2681, Pomona, CA 91769-2681. 3,000 square feet. Memberships open. Club phone (909) 865-7035. Tue. and Thur. evenings 8 - 10. [windsays@compuserve.com](mailto:windsays@compuserve.com)



### Railroad and Locomotive Historical Society

Glendale (CA) Savings and Loan first Tuesday evening of every month. Fairplex museum on the following Sunday (usually the second Sunday). Loren Martens (909) 624-2132. See a real UP Big Boy, SD-40, SP Northern, Santa Fe, PE and other real equipment.

### Riverside Live Steamers

Hunter Park, Riverside, CA. East on Columbus off I-215. 10 - 3. Second and fourth Sundays.

### San Bernardino Railroad Historical Society

[www.rrhistorical.com/sbrhs/](http://www.rrhistorical.com/sbrhs/)  
Santa Fe Northern 3751

### San Diego Model Railroad Museum

[www.globalinfo.com/noncomm/SDMRM/sdmrm.htm](http://www.globalinfo.com/noncomm/SDMRM/sdmrm.htm)  
Electric Building. 1649 El Prado St. Casa De Balboa, Balboa Park, San Diego CA 92101. Tue.-Fri. 11-4; Weekends 11-5. (619) 696-0199

San Diego MRC (HO) Fridays 7:30 - 10 PM  
La Mesa MRC (HO) Tuesdays 7:30 - 10 PM 1 619 263-2156  
San Diego Soc. of N Scale Fridays 7:30 - 10 PM. (619) 669-1521

[members.aol.com/NTrainszo/web/sdsons.html](http://members.aol.com/NTrainszo/web/sdsons.html)

### San Juan Southern MR Association

2303 Calle Balandra, San Clemente, CA 926673 (714) 361-1886

### Santa Susana MRC

P.O. Box 3429, Simi Valley, CA 93093. For information contact Robert Cockran (805) 252-1042. Santa Susana Depot is located at Santa Susana Park (Katherine Rd. Near Kuehner Dr. adjacent to and South of the railroad tracks, about 1 mile South of Los Angeles St. in Simi Valley). If coming from the I-118 it is the first right on Kuehner after crossing the RR tracks. Operates every Sunday and the second Saturday from about 10 AM.

### Short Trak 'N RR

1450 N. Santa Fe Ave. #M, Vista, CA 92083, Paul Schmitt, 805 Mart Vista Dr., Vista, CA 92083. (760) 940-8000; [flyers@inetworld.net](mailto:flyers@inetworld.net)

### Slim Gauge Guild

[www.patchbay.com:81/PUBLIC/HOMEPAGE/jeff.smith\\_183/INDEX.HTM](http://www.patchbay.com:81/PUBLIC/HOMEPAGE/jeff.smith_183/INDEX.HTM)  
Sn3 and HOn3 layouts. China Factory Mall Basement, 300 S. Raymond Ave., Pasadena, CA. For information, Brian Brooks (818) 796-7791 or Jeff Smith at [jeff.smith@patchbay.com](mailto:jeff.smith@patchbay.com)

### Southern Arizona Society of Model Engineers (SASME)

HO & HOn3 1818A E. Winsett, Tucson, AZ 85719. Wednesdays. Richard Dick (520) 790-5356, [rdick@west.raytheon.com](mailto:rdick@west.raytheon.com)

### Southern California Garden Railway Society

Ganesha Junction Fairplex outdoor miniature railway. Revised in 1997. Original operation in 1935. Contact Ron Deisler, 4532 Graywood Ave., Long Beach, CA 90808-1015

### Southern California Live Steamers

Wilson Park. 2200 Crenshaw Blvd., Torrance, CA. Free rides on the First Sunday of every month except July. Enter from Washington Street entrance. Dave Cox (310) 472-6363

### Southern California Shortlines MR Association

1013 Elaine Dr., Santa Ana, CA 92703. (714) 554-8035

### Sun-N-Sand MRC

[www.getnet.com/~dickg/ntrak/sunsand.html](http://www.getnet.com/~dickg/ntrak/sunsand.html)  
7301 E. Indian Bend Rd., Scottsdale AZ 85250.  
[dickg@getnet.com](mailto:dickg@getnet.com)

### Sun City MRC

Fairway Recreation Club, 10600 Peoria Ave., Sun City, AZ 85351 (623) 933-3629

### Sun City West MRC

12407 Keystone Dr., Sun City West, AZ 85375 (623) 546-4696

### Thunderbird Model Railroad Club

(HO) Arizona State Fairgrounds, Phoenix, AZ

### Travel Town

Griffith Park, Los Angeles, CA. Intersection of I-5 and S-134. Real steam and traction railroad items. Other transportation modes are also featured. Rides for children. Every day.

### East Valley Lines

N Open House every Sat. and Sun. 11 - 3. Lowell Majors, (213) 662-8339 PO Box 5732, Glendale, CA 91301.

### Tri-State MRC

766 Glen Dr., Riviera, AZ 86442

### Union Station

[ucs.usc.edu/~ertrinidad/rail.html](http://ucs.usc.edu/~ertrinidad/rail.html)  
800 North Alameda in downtown Los Angeles, CA. Elson Trinidad

### Valley MRC

(HO) 31815 Camino Capistrano, San Juan, CA. Jerry Lieblich (714) 857-9667

### West LA N-Trakers

N modules. Bill Carson, 3768 Bagley #215, Los Angeles CA 90034. (310) 839-2379

### 20's & 30's Modular Railroad

HO. About 6 times a year at NMRA and GATS. Mel Johnson (310) 425-1380  
Look for their announcements in the PSR *Dispatch* "Flag Stops" and the *NMRA Bulletin*.



Send updates/corrections for this list to Lindsay Smith, Member Aid, at [windsays@compuserve.com](mailto:windsays@compuserve.com)

# D I R E C T O R Y

**TRUSTEE**

**ROBERT SHERLOCK**

740 East Acoma, Phoenix, AZ 85022-4356  
(602) 375-2177, RLS4000@aol.com

**ACHIEVEMENT PROGRAM**

**DON STEWART**

2722 E. Bighorn Avenue, Phoenix, AZ 85048-8984  
(480) 759-5019, snpcw@aol.com

**PRESIDENT**

**ROBERT CHAPARRO**

P.O. Box 12028, Santa Ana, CA 92712-2028  
(909) 279-1335 (H), (714) 834-2073 (W), coronabob@hotmail.com

**CONVENTION COORDINATOR**

**KEN ALLEN**

930 Briant Street, San Marcos, CA 92069-2114  
(760) 744-2769, mallen14@earthlink.net

**VICE PRESIDENT & PUBLICATIONS CHAIR** **TOM MOHR**

3712 Southridge Way, Oceanside, CA 92056-5426  
(619) 631-5522 (Voice & Fax)

**BY-LAWS & OPERATIONS MANUAL** **HAROLD GRAEBNER**

2824 Golden Meadow Drive, Rancho Palos Verdes, CA 90274-2926  
(310) 541-1371, 74034.3331@compuserve.com

**SECRETARY**

**WALT SCHMALGEMEIER**

El Cajon, CA 92021-4939  
(619) 593-7693, wschmalgemeier@usa.net

**RAIETTES**

**VACANT**

**TREASURER & NOMINATIONS CHAIR** **TOM DRAPER**

10837 North 34th Place, Phoenix, AZ 85028-3310  
(602) 953-1681, rmt190@email.sps.mot.com

**WORLD WIDE WEB COORDINATOR**

**MATT FURZE**

17237 North 16th Avenue, Phoenix, AZ 85023-2555  
(602) 375-8229, mattfurze@aol.com

**MEMBER SERVICES**

**JIM BARCUS, SR.**

P.O. Box 670, Black Canyon City, AZ 85324-0670  
(623) 374-0077, jbarcusr@aol.com

**WORLD WIDE WEB SITE HOST**

**DICK GREATOREX**

12025 North 28th Street, Phoenix, AZ 85028-1113  
(602) 971-6263, dickg@getnet.com

**MEMBER AID & CONTEST CHAIR** **LINDSAY SMITH**

1446 Paseo Garcia, San Dimas, CA 91773-3915  
(909) 599-0182, wlindsays@compuserve.com

**EDITOR**

**DORR ALTIZER**

15257 W. Tad Lane, Surprise, AZ 85374-3479  
(623) 975-9582, Fax: (623) 975-1543, dorr@csi.com

**ARIZONA DIVISION DIRECTOR** **RICHARD DICK**

5948 East Hawthorne Street, Tucson, AZ 85711-1528  
(520) 790-5356, Fax: (520) 663-6535, rldick@west.raytheon.com

**LOS ANGELES DIVISION DIRECTOR** **DAVID COX**

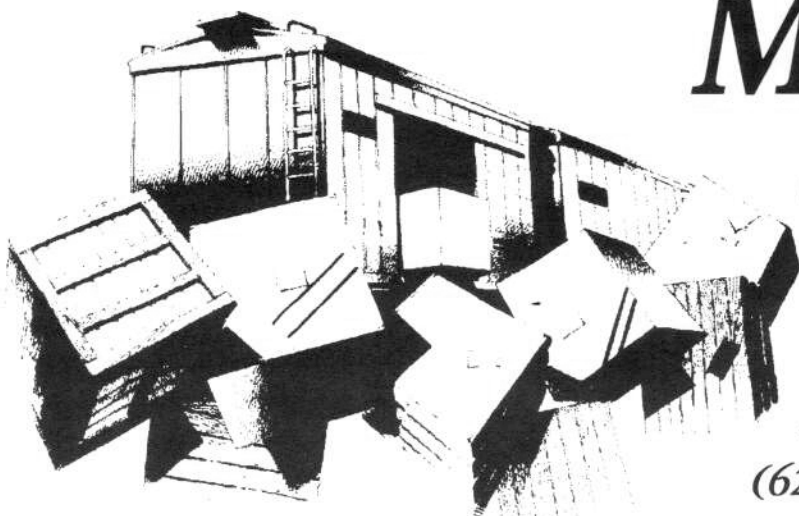
178 South Gretna Green Way, Los Angeles, CA 90049-4016  
(310) 472-6363, david23star@1stnetusa.com

**CAJON DIVISION DIRECTOR** **ED HALL**

213 Nightfall Terrace, Henderson, NV 89015  
(702) 564-6176, ehall@net-tek.net

**SAN DIEGO DIVISION DIRECTOR** **CHUCK HART**

13207 Carriage Road, Poway, CA 92064-5508  
(619) 748-6816, Fax: (619) 646-9977, charles.v.hart@cpmx.saic.com



# Moving?

Send your address changes to

**Jim Barcus**  
**PSR Member Services**  
**P.O. Box 670**  
**Black Canyon City, AZ**  
**85324-0670**

**(623) 374-0077 jbarcusr@aol.com**

# Newsletter Editors in the PSR Divisions



## SPUR LINE

Gary Stilts  
3117 E. Siesta Lane  
Phoenix, AZ 85024-2516  
(602) 569-0748  
Fax: (602) 534-1108  
GStilts@aol.com



## ORDER BOARD

Bobby Revis  
7475 W. Charleston Blvd.  
Apt. 48  
Las Vegas, NV 89117-1426  
(702) 360-6065  
Fax: (702) 360-6065



## L. A. COUPLER

Louis Piser  
19921 Grevillea Avenue  
Torrance, CA 90503-2123  
(310) 370-7363



## MAIL HOOK

Tom Mohr  
3712 Southridge Way  
Oceanside, CA 92056-5426  
(760) 631-5522

## Stuff from the Erecting Shop Floor

Dorr Altizer, Editor

The *PSR DISPATCH* is published quarterly by the Pacific Southwest Region of the National Model Railroad Association. Material for publication must be received on or prior to the deadlines shown in the Publication Schedule (bottom right corner).

### Legal Stuff

All opinions and points of view expressed herein are those of the authors or the editor and are not necessarily those of the members or officers of the Pacific Southwest Region. Permission to quote is granted by giving credit to the Pacific Southwest Region, the *PSR DISPATCH* and the individual authors.

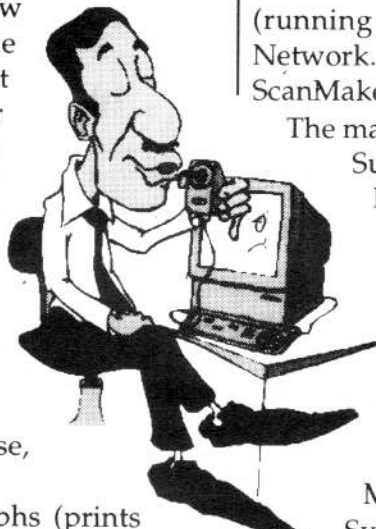
### Contributing

Articles may be emailed (preferred method) to [dorr@csi.com](mailto:dorr@csi.com) or surface mailed to 15257 W. Tad Lane, Surprise, AZ 85374-3479.

Black & white or color photographs (prints only) must be mailed to the above street address. Digital images may be emailed or mailed.

Mailed articles may be on a 3.5 in. PC disk, Iomega Ditto 2GB (or any QIC-80 or 3020 - XL, Wide or Travan) data tape in any word processor format, handwritten, typed, or printed on any type of printer.

All photographs, disks and/or tapes will be returned after publication.



If you have any questions, call (623) 975-9582, email to [dorr@csi.com](mailto:dorr@csi.com) or leave a message in the TrainNet Forum on CompuServe® at

<http://go.compuServe.com/TrainNet>

### Hardware & Software

The *PSR DISPATCH* is created with Pentium computers (running Microsoft Windows 95) on a Local Area Network. Photos and text are scanned on a Microtek ScanMaker E3 flatbed scanner.

The master pages are created on a NEC Silentwriter SuperScript 660 and then printed and mailed by Kwik Kopy Printing, 5135 West Thunderbird Road, Glendale, AZ 85306.

The primary desktop publishing software is Adobe Pagemaker 6.51. Support software includes Broderbund ClickArt 125,000, Corel CorelDRAW! 7.0, Adobe ATMDeluxe 4.0, SPC Harvard Graphics F/X 1.10, Xerox Textbridge Pro 98, Adobe Photoshop 4.01, Microsoft Word 97, Helios TextPad 3.0, and Symantec WinFaxPro 9.0. 📠

## 1999/2000 Publication Schedule

Issue	Deadline	Mailing Week
3/1999	16 July 1999	2-6 August
4/1999	15 October 1999	1-5 November
1/2000	21 January 2000	7-11 February
2/2000	21 April 2000	8-12 May



# Membership Application

## Pacific Southwest Region - National Model Railroad Association



Date \_\_\_\_\_

Name \_\_\_\_\_

Address \_\_\_\_\_

City \_\_\_\_\_ State \_\_\_\_\_ ZIP \_\_\_\_\_

Telephone ( ) \_\_\_\_\_ Occupation \_\_\_\_\_

Primary Scale \_\_\_\_\_ Date of Birth \_\_\_\_\_

New [ ] Renewal [ ] PSR # \_\_\_\_\_ NMRA # \_\_\_\_\_ Exp. Date \_\_\_\_\_

<u>Class of Membership</u>	<u>NMRA</u>	<u>PSR *</u>	<u>BOTH</u>
Regular	\$32.00 [ ]	\$5.00 [ ]	\$37.00 [ ]
Youth (Under 20 Years)	\$21.00 [ ]	\$3.00 [ ]	\$24.00 [ ]
Affiliate (No Bulletin or Local Publications)	\$16.00 [ ]	\$2.50 [ ]	\$18.50 [ ]
Family	\$ 6.00 [ ]	\$1.00 [ ]	\$ 7.00 [ ]

\* YOU MUST BE A MEMBER OF THE NMRA TO BE A PSR MEMBER.

For information on Life or Affiliate Life Membership, call 623-374-0077. Send this application and your check or money order (made payable to "Pacific Southwest Region, NMRA") to: PSR - NMRA, Jim Barcus, Sr., P.O. Box 670, Black Canyon City, AZ 85324-0670.

**Referred By:**

### PSR DISPATCH

Official Publication of the  
Pacific Southwest Region  
National Model Railroad Association



See the registration form on page 13 for  
**In the Pines in '99**  
September 15-19, 1999

BULK RATE  
U.S. POSTAGE  
**PAID**  
PERMIT NO. 1051  
PHOENIX, AZ

FORM 3547 REQUESTED

POSTMASTER: Please send address changes to:  
P.O. Box 670  
Black Canyon City, AZ 85324-0670