



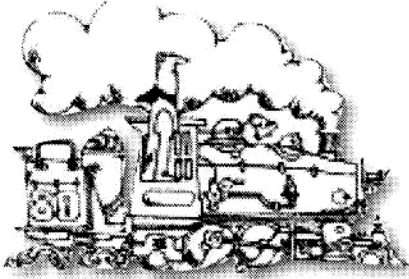
PSR Dispatch

PACIFIC SOUTHWEST REGION

National Model Railroad Association®

VOLUME 24, ISSUE 2 — 2ND QUARTER, 2006

© 2006 Pacific Southwest Region, NMRA®



From the Hot Seat!

Ed Hall, MMR, PSR President
trained@cox.net

Well, now that spring is here it's time for cleaning. I spent some time in the shop and found lots of projects I need to complete. Looking at that never ending list, I may find something for the contest room at the convention this fall. There will be so many activities at the convention you may not have enough time to do all of them. Ben and Don will fill you in later in this issue of the Dispatch. Be sure to make your plans now so you'll not miss any of the fun in San Diego.

Nothing new from National except that the Rail Pass program has been extended for another year. This offer is good for new members and those who have not been NMRA members for two years or more. Rail Pass members can vote, attend conventions and participate in contests, but cannot hold office and will not receive a New Member Pack. Membership will renew at the regular membership rate. So if you have

a friend that is thinking about joining please share this information with them.

A little reminder, don't forget you now have to subscribe to receive the Dispatch when you renew your NMRA membership. I almost forgot and had to call headquarters to add it. The office said they should have the web site ready to accept the additional items if you had already completed your renewal by the time you read this.

The ballot for President and Vice President is included as an insert in this Dispatch, please show your support for the Region by sending in your vote.

At the mid year Board of Directors meeting in March we discussed plans to ease the burden on people putting on Regional conventions. Don Fowler and Carl Heimberger will look into establishing a committee comprised of volunteers from each Division to work on the convention. The idea is not to reinvent the "wheel" every time we do a convention. One group will secure the Hotel, another will gather clinicians, etc. This will spread the responsibility out rather than have one or two people do it every four years.

See you at the next stop...

Elections - Ballot Inside!

VOTE Today!

In This Issue

Arizona Division	2
Cajon Division.....	2
Los Angeles Division.....	3
San Diego Division	3
Contest Corner	4
Railettes	4
"Back to the Future in 2006" Convention News	6
Candidate Statements	9
Flag Stops.....	14
PSR Directory	16
Membership Form	18

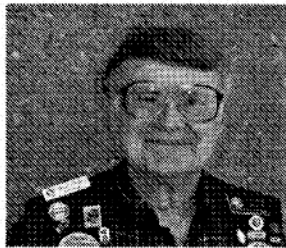
Division Director

Arizona

Duane Buck
buckgnry@msn.com



The March 4 meet, in Phoenix, produced one of our largest turnouts in the past several years. There were 96 in attendance. Seven new memberships and one renewal were processed. Additionally, there was a strong showing in the contest room with 17 model construction



entries. Among the model contest entries there were two outstanding entries, the likes of which, one usually sees in NMRA national contests.

The models entered by Alan Barnes and Randolph Snow received merit award scores of 116 and 118 points, respectively. Alan's entry was a

scratchbuilt gas-electric loco and Randolph's entry was a mine complex with incredible detail.

Congratulations to Alan Barnes! With the judging of his gas-electric, he has completed all requirements for the coveted title of Master Model Railroader.

Work is rapidly proceeding on the preparations for the Arizona Division hosted 2007 PSR Convention. The PSR Board has accepted and approved the Arizona Division convention bid. Mark your calendars for the September 5-9, 2007 time frame and come join us in Tucson. You will not be disappointed.

There is an important PSR election coming up in the near future. It is the elections for PSR President and Vice President. It is hoped that fellow members, within the PSR, will show a high level of interest through a large number of votes cast during this electoral process.

The next Arizona Division meet is scheduled for Saturday, August 12 in Flagstaff. As always there will be entertainment for all, including a full slate of NMRA contests, clinics, mini-swap meet, raillette activities and door prizes. John Lovely and the Flagstaff crew have promised a great meet. Come join us.

Let's make the PSR convention at San Diego, in October, a rousing success. The venue is great. Contact Ben Sevier or Don Fowler if you wish to help.

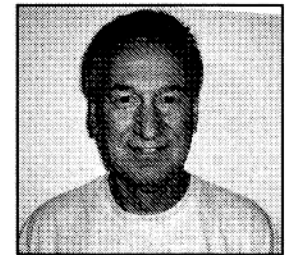
Cajon

Carl Heimberger
CHeimberger@anaheim.net



It is hard to believe that it has already been seven months since that PSR Convention in Buena Park and that the San Diego Divisions PSR Convention 'Back To The Future' is only six months off. At the Mid Year BOD Meeting we had a chance to visit the convention site and hear about the planning for the 2006 convention – this is a convention you should not miss. I would encourage all Cajon Members to get your registration in now and make the commitment to be part of this exciting event. I would also like all the members of the Cajon Division to bring all those buildings, cars, locomotives and photographs you have been working on for the last several months and enter them for judging.

Also if you have a different or unique clinic give Don Fowler a call – I think they are still looking for Clinics. And lets not forget that even though the San Diego Division is hosting this convention it is a PSR event, and the Cajon membership needs to support the convention.



An interesting topic that came up at the Mid Year Board Meeting is that some Divisions are exploring not printing and sending out their quarterly newsletters. I know that publication and mailing of these newsletters is becoming more and more expensive each year. However, I still see some value in receiving the newsletters. First, unless you are an avid surfer of the net chances are you will not go looking for the newsletters. Second, I just received my addition of Scale Rails and to my surprise there it is an election for National Offices, if I had chosen to opt out of the Scale Rails I wouldn't have known this and been a member without a vote. The cost for a full year of both Scale Rails and PSR Dispatch is only \$20 (that's 6 cents a day) so I would like to encourage each member to not opt out.

Lastly, this organization is one made up of ordinary models who volunteer their time to help support the NMRA/PSR. And I know all the Divisions keep seeing the same few members each year just doing different

Continued on next page

Activity Reports



Los Angeles

Paul Cutter
patecu@sbcglobal.net



San Diego

Don Fowler
Donald.Fowler@sdsheriff.org

At the PSR Board Meeting held on March 18, 2006, the board approved the Arizona Division's submission to host the 2007 PSR Convention to be held in Tucson.

On April 1st & 2nd, the L.A. Division had a very successful public model train show at the South Coast

Botanic Gardens in Palos Verdes with above average attendance for this venue.



Depending upon when you read this, we will have a meet at the home of the Mergards with a decal clinic by Don Martin on May 20th.

Upcoming events include the NMRA National

Convention in Philadelphia on July 2-9 with a large contingent from the L.A. Division planning to attend.

On August 6th, we will have our Division Board Meeting and annual potluck.

On October 11-15, the San Diego Division will be hosting the PSR Convention. Plan to attend this informative and fun time.

In case you haven't heard, the L.A. Division, along with the PSR is hosting the NMRA National Convention in July 2008 in Anaheim. We need volunteers at all levels from the committee down to working during the convention itself. A good way to see many fine home layouts is to volunteer as a tour escort. No experience necessary, as you will be trained, and tour escorts do not have to pay for the tour. For more information, please contact Bill Mergard.

That's it for now. Stay on the tracks and keep those engines running.

Continued from previous page

jobs. The leadership of PSR and its Divisions is not a secret society – we are just like you some – Model Railroaders who felt we should give something back to the hobby we enjoy so much. My point here is take a good look at your divisions and see where you can help to make the difference. Believe me, the experience is well worth it.

*It's not my place to run the train
The whistle I can't blow
It's not my place to say how far
The train's allowed to go*

*It's not my place to blow off steam
Or even clang the bell
But let the damned thing jump the track
And see who catches Hell!*

This little verse has some significant meaning to me right now as we make final preparations for our rapidly approaching region convention. Traditionally, once every four years each of our Divisions shoulder the load and take responsibility for our annual event. We generally start having planning meetings about two years out with a few key members who didn't run away screaming after the last convention.

Those brave souls begin the planning process and solicit support from local clubs and other members of the Division. During this process, we struggle with costs, activity choices, facilities, advertising, and a myriad of other issues. A lot of hard work and dedication go into each convention and if all goes well, it's a lot of fun for all. If we aren't directly involved in the preparations, we easily forget how much work that end product really is.

During our mid-year Board of Directors meeting last March, a suggestion was made that each of our respective Divisions combine resources and present a truly "Regional" convention. By drawing on the talent from the entire Region for every event, Divisions wouldn't have to go back to the drawing board and re-invent the wheel every four years.

As an example, it's been difficult at times to solicit members who have backgrounds in advertising or business connections to procure facilities. If we utilized existing talent every year from all over the Region, it could make things a lot easier and more efficient for everyone.



Contest Corner

Duane E. Buck, PSR Contest Chair
buckgnry@msn.com

There are two primary forms required to enter NMRA contests. These are the Contest Entry Form, Form 901, Rev.C, 18 September 2000 and the Judges' Score Sheet (for model construction contests), Form 902, Rev.B, 23 July 2000. It is sound practice to acquire and look these forms over before starting your contest entry project.

While the NMRA Contest Entry Form covers all NMRA sanctioned contests, Arts & Crafts, Model Construction, Photos and Popular Vote categories, a form 601 Photo Contest Entry Blank is also required for PSR photo contests. This latter form provides more in-depth information than the basic NMRA Entry Form.

Additional forms for the Arts & Crafts (PSR 701 Form) and Module Contests (NMRA 903, Rev. A 23 July 2000) are required.

Please refer to Volume 23, Issue 2- 2nd Quarter, 2005 of the DISPATCH for descriptions of the elements that judges are looking for in each contest category. This article has been described, by some of you, as the most concise and no-nonsense description of contest elements they have ever seen.

To close, I would like to mention contest judging. In the Arizona Division we are seeing an increase in the number of persons willing to judge in our contests. Some are first time judges. These "first timers" marvel at the fact that they are seeing much more in the models than they did when routinely passing through the contest room. I can't emphasize enough the benefits that are derived from contest judging. It is truly an educational experience. I have been a model railroader for 57 years and have seen many changes in our hobby and I never cease to be amazed by how much I have learned through the judging process. This year, in Philadelphia, I will be judging in my ninth national contest. I look forward to this task and another learning opportunity. I invite you to join your fellow modelers as a judge in your division and region contest rooms. Your judging experience level is inconsequential as you will be paired with experienced judges. Join us and learn!

Regards, Duane



Achievement Program

Don Stewart, AP Program Manager
snpcw@cox.net

Alan Barnes earned his Master Model Railroader (MMR) certificate. The plaque will be presented to Alan at the PSR Convention in October. Alan earned his final certificate in Motive Power with a beautiful D&RGW Motor Car.

Dick Roberts earned several Certificates. These were confirmed and received from National in late March. These certificates are:

Master Builder Scenery
Model Railroad Engineer - Electrical
Model Railroad Engineer Civil

Dick also earned his Golden Spike Award. Bill Flinn's™ Master Builder Scenery certificate is currently being processed.

I hope you are building those models for the Regional Contest in San Diego. If you are not sure how they will do in the contest, take them to your Division level Achievement Program manager and they can give you some ideas and tips. You can also fill out the paperwork in advance. Computers are excellent tools for preparing and editing your comments so the information the judges need are there on the forms (or attachments), but you are not writing a book (that is difficult and time consuming to read).

As a snapshot, here are what you should describe under the contest headings.

- Construction: This is how you built the model. If you built from a kit, include the instructions. That saves a bunch of time writing. Do not list details or painting information as they are covered elsewhere.
- Details: Simply list the details added to the basic model. If the kit you are building includes super details, these are part of this list. The car is functional without all the brake rigging and grab irons you are adding.
- Conformity: Here a picture is worth a lot of words. This is the easiest way of scoring high in conformity. That is if you have followed the picture. List the prototype items that are unusual or that you followed in your model. A free-lanced model can score high here if you show evidence that you followed aspects of the prototype. By the way, model photographs do not count here. They are just another modeler's work

Continued on next page

Railettes

Janet Spooner, Railette Chair
jspooner86@aol.com

Hope all of you are planning to come on down to San Diego for the convention in October. There will be a full slate of activities for all of you, There will be make n' take sessions, a luncheon, possibly a bingo game or two. There will be enough that you can be as busy as you want to be at the convention.

In addition to all the committee is planning for you to do you will be in San Diego, home of the San Diego Zoo, Balboa Park, Coronado Island, the US Navy, Mission Bay, Sea World, and Old Town as well as many great shopping malls.

You can keep busy going to all of these places outside of the Railette Room but we hope we can count on you to stop by and say hi.

To all those ladies who made Buena Park a success, we certainly hope you will come on down to San Diego, renew our friendship, join in and have fun. If this is to be your first time at a convention, stop by and say hello and join our fun group. All are welcome.

Division 7, Mid-Central Region of the NMRA, has offered for sale a series of HO scale freight car kits, primarily of interest to those modeling the period of the 1920's through the late 1950's. Our last five projects have been USRA 2-bay coal hopper cars (by Accurail) for the CCC&St.L (Big Four), Cincinnati Northern (NYCS) and Virginian Railway. We also offered a Pennsy-clone Gla 2-bay hopper (by Bowser) for the Cincinnati, New Orleans and Texas Pacific (Southern).

Our current project is a USRA design Carolina, Clinchfield & Ohio Railway (CC&O) box car (by Accurail) with four road numbers. The CC&O took delivery of 300 of these outside-braced, wooden 40' cars with steel ends and wood doors in 1919 and the 1953 ORER indicates that 211 were still operating late in 1952. They were frequently seen in interchange service. A few cars however were dedicated to less-than-carload (LCL) service, serving customers located on the Clinchfield. Please visit our web site (see link) for photos of all four cars, car history, and ordering information. 4 car numbers are available: 5058 & 8067 each w/LCL service notations and 8198 & 8237 without LCL notations. http://www.cincy-div7.org/Car_Project.html

We thank you for your patronage!
Paul Maciulewicz, Jim MacKnight
Car Project Committee

Continued from page 3

A discussion ensued as you might imagine and many suggestions and concerns were shared. A Region "Convention Chair" position could be created to coordinate all efforts. Divisions could be compensated from profits based upon the amount of participation they offer and locations could continue to rotate as usual. In the end, I offered to prepare a report with recommendations for the implementation of this concept to be presented at our next Board meeting during the Regional Convention held in San Diego next October.

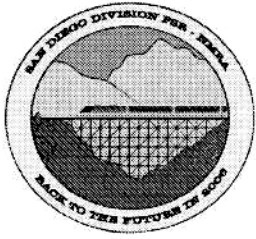
If you have thoughts or suggestions on this subject, please send them to me for input. I would be happy to include all constructive feedback in my report for the Board's consideration. This idea may not go anywhere if we can't reach a consensus but I believe that it's worth taking a serious look at. Tell me what you think...

Continued from previous page

- and his or her mistakes may become yours.
- **Finish & Lettering:** The work will do most of the talking here. Just describe how you painted, lettered and weathered your model.
 - **Scratchbuilt:** Just list the scratchbuilt items. You do not need to describe how you built them (that is for the construction section above).

So, it is not too difficult to fill out the paperwork. Just follow the advice above and describe the work you did as if you were someone that did not know about the prototype or how you did the work. Have a friend review your paperwork. It may garner you more points and be the difference between a nice model and a merit award.

**BACK TO THE
FUTURE IN 2006
Pacific Southwest Region
Annual Model Railroad
Convention
October 11th Thru 15th, 2006
San Diego, CA**



BACK TO THE FUTURE IN 2006

Pacific Southwest Region Convention

October 11th through 15th, 2006

Ben Sevier Convention Chair

The next pages of information on the 2006 PSR Convention, "Back to the Future in 2006" in San Diego, California, provide the most current information on what is planned, including clinics, events, prototype tours, layouts, etc. Also in this issue is the Convention Registration Form, and a Convention Flyer. Please note cutoff dates, and get your registration in today!

CONVENTION WEB SITE:
www.sandiegodivision.org/

REGISTRATION FEES:

The following NMRA® member registration options are available:

NMRA Adult Rail after 3/31/06.....	\$65
NMRA Adult Rail after 8/19/06.....	\$75
Raillette:	\$40
Youth (10 - 17 w/ paid adult):	\$15
Child:.....	Free
Single Day:	\$30

Non-NMRA® attendees must pay an additional fee of \$10 or purchase a one time only 6 month NMRA® Rail Pass at \$ 9.95.

Make checks or money orders (U. S. Funds only) payable to San Diego Division and mail to Gary Robinson, 2319 Conway Drive, Escondido, CA 92026

HOTEL:

Ramada Inn & Conference Center
5500 Kearny Mesa Rd.
San Diego, CA 92111

Room Rate ~ \$79
Corporate Code for Rate ~ PSR-NMRA
Free Parking ~ Next to Train Show
For Reservations ~ (800) 447-2647 or
<http://www.ramadasandiego.com/reservations.htm>
Location: South of SR-52, East of I-805, and West of SR-163, in the Kearny Mesa area.

COMMITTEE MEMBERS:

Convention Chairman – Ben Sevier

12793 War Horse Street, San Diego, CA 92129
(858) 538-9862, sddiv@sbcglobal.net

Registrar – Gary Robinson

2319 Conway Drive, Escondido, CA 92026.
(760) 839-5877, grobbedobbie@yahoo.com

Treasurer – Don Fowler

10768 Sayers Court, Santee, CA 92071
(619) 787-1930, donald.fowler@sdsheriff.org

Train Show – Bob Lang (Vendors)

5165 Montessa Street, San Diego, CA 92124
(858) 565-9062, langteam@aol.com

Jim Wirt (Exhibitors)

4678 Bryson Terrace, San Diego, CA 92130
(858) 259-0283, jwirt@ucsd.edu

Clinic Chair – Don Fowler

10768 Sayers Court, Santee, CA 92071
(619) 787-1930, donald.fowler@sdsheriff.org

Prototype Tours – Bob Moore

1258 Santa Barbara Street, San Diego, CA 92107
(619) 224-4894, bobmoore24@earthlink.net

Layout Tours – Dave Balser

2037 Countrywood Way, Encinitas, CA 92024
(760) 436-6139, dbalser@adelphia.net

Contest Chairman – Rodger Gredvig

6548 Alcalá Knolls Drive, San Diego, CA 92111
(858) 571-7118, pgredvig@nethere.net

Railettes – Kim Fowler

10768 Sayers Court, Santee, CA 92071
(619) 258-3529, fowki@cox.net

Publicity – Jim Harris

jameshughes175@earthlink.net

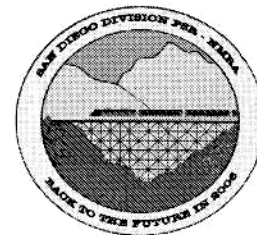
Program – Chuck Hart

13207 Carriage Road, Poway, CA 92064
(858) 945-6816, pce@cox.net

BACK TO THE FUTURE IN 2006

Pacific Southwest Region Convention

October 11th through 15th, 2006



Gary Robinson

Registrar

grobbedobbie@yahoo.com (760) 839.5877

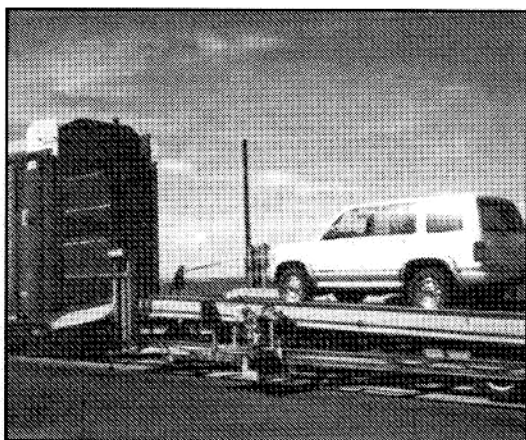
Bob Lang

Train Show Chair

Back to the Future in 2006, the PSR Convention, is getting closer, and the excitement is building. We are only about five months away now. We have over 110 people, rails and non-rails, who have already registered for the fun! Don't miss out. You can save \$15 by registering before August 20, when the registration fee increases from \$65 (for rails) to \$75. A registration form is included in this issue, or you can contact me directly.

Thanks to those of you who have already registered. You should have received your initial confirmation, either via e-mail or the USPS. The clinic schedule is being finalized, and we're almost ready to send out the list of Extra Fare items, so be sure to keep an eye out for that. We have some exciting tours, but space will be limited on some, so you'll want to get back to me early with your selections. You won't want to miss out on the one you want! I think you'll be pleased with our convention cars, and other items we'll have available from the Company Store. Layout tours are falling into place as well. We'll have several layouts on the tours that have been, or will be, in the modeling press, plus many that should be. Most scales are represented, from N through 1.5 inch, including narrow gauge.

I'm looking forward to seeing you in October. In the meantime, feel free to contact me with any questions you may have.



Where's This? - Prototype Tours

The Convention Train Show will feature both vendors and layouts. It will occupy almost 9000 square feet in two spaces in the Al Bahr Shrine, adjacent to the Convention hotel. The show will be open three days, Friday, Saturday and Sunday, providing plenty of opportunity amidst all the other Convention activities. Refreshments, served from the Shrine kitchen, will be available inside the show. While the list of layouts and vendors is still fluid, a full range of scales and interests is anticipated.

Jim Wirt

Exhibitor Chair

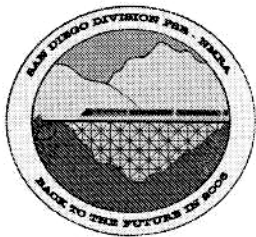
Besides the various vendors at the train show there will be a number of interesting layouts in the hall for your viewing pleasure. At the moment we are expecting the usual fine setups from the Orange County Modular Railroaders (HO), and the N-TRAK layout from the Short Trak Railroad Club of the Antique Gas and Steam Engine museum. The HO scale High Desert Modular Model Railroad Club will be showing their modules both for the public and for judging, and the Poway Station club will have some of their modules setup as well.

As something a bit different, the Southern California LEGO Train Club will be setting up their LEGO layout - if you haven't seen it, it's quite a lot of fun - maybe not exactly "scale" modeling, but it's amazing what they do with all those little bricks.

We're still talking to some other groups, so there should be something to interest everyone. I look forward to seeing you there!

Convention Articles

Registration.....	7
Train Show.....	7
Clinics.....	8
Layout Tours.....	12
Prototype Tours.....	14
Registration Form	Insert



BACK TO THE FUTURE IN 2006

Pacific Southwest Region Convention

October 11th through 15th, 2006

Don Fowler Clinics

CLINIC LISTING

I promised lot's of clinics, clinics on various topics and ranges of interest. Read through them, and see if you don't agree that we've come through. Clinics will be presented during the morning and afternoons beginning Thursday morning and ending on Saturday afternoon. I hope you find several that you just can't miss - and look forward to seeing you there!

Add Animation – Rodger Gredvig

Learn animation techniques to add motion and action to more than just trains. Examples will include cranes, skip loaders, bridges, oil wells, windmills, logging scenes and more.

Building the Bear River Bridge – Dick Roberts

This clinic will take you through the process of building a large steel girder bridge step by step with photos and plans.

Craft Products for Model Railroading – Kim Fowler

Hundreds of inexpensive and useful items are lurking in local craft stores. Highlighted products include glues, paint, raw materials, and tools well suited for model railroading.

Creating the Perfect Pine – Bob Mitchell

Bob will take you on a journey from concept to creation. Attendees will make and take their own finished tree ready for placement on the layout.

Decaling with the Pros – Steve Dunham

Purchase a convention car and bring it to this clinic to decal it like a pro with an expert from Microscale Decals (all necessary materials will be provided).

Easy Backdrop Painting – Darryl Huffman

Simple techniques and guidelines will be demonstrated for painting effective backdrops using cheap brushes and acrylic paints with emphasis on achieving distance perspective.

Figure Painting & Modifications – Matt Wellhouser

This clinic will demonstrate how to make modifications to personalize scale figures and provide some neat tricks for painting them as well.

Helpful Hints for Beginners – Frank Tepedino

This presentation will cover many of the problems and

mistakes commonly made during the construction of model railroads.

History of San Diego Streetcars – Jim Price

A Power Point presentation of our local streetcar history that began in the early 1880's as the San Diego Electric Railway and continues today as the San Diego Trolley.

Illusion of Mirrors – Bob Mitchell

This clinic will demonstrate some of the many uses of mirrors with the aid of actual models to enhance the perception of space on model railroads

Impossible Railroad I – Dr. Reena Deutsch

Part one of this slide presentation will focus on the initial construction of the San Diego & Arizona Eastern Railway with its trials and tribulations up to the 1980's.

Impossible Railroad II – Dr. Reena Deutsch

Part two of this slide presentation will focus on recent activity of the San Diego & Arizona Eastern since 1980 and an update on current and future operations.

LED'S & Effects Lighting – Tony Burzio/Hans Paar

Techniques will be demonstrated for handling SMD miniature LED's along with the construction of an operating scale streetlight.

Modeling Downtown San Diego – John Fiscella

The task of modeling San Diego's Center City in 1949 is presented with information on research and modeling techniques for specific trees, vehicles, buildings, and lighting.

Modeling Prototype Loads – Chuck Naumann

This clinic will demonstrate some creative and easy techniques for making a variety of realistic loads for the open cars on your railroad.

Modeling with Photoshop – Steve Harris

Using "Photoshop" software as a modeling tool, Steve will demonstrate how to easily make signs, curtains, blinds, walls, and other effects.

Modeling Southern California Citrus Industry

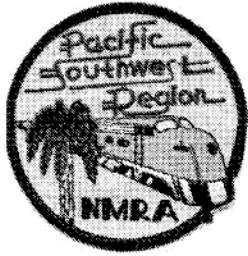
– Bob Chaparro

Guidelines for modeling the citrus industry and related railroad operations during the steam and diesel transition era including groves, structures, equipment, and resources.

Multi-Function Single Motor Animation

– Sandy Friedfeld

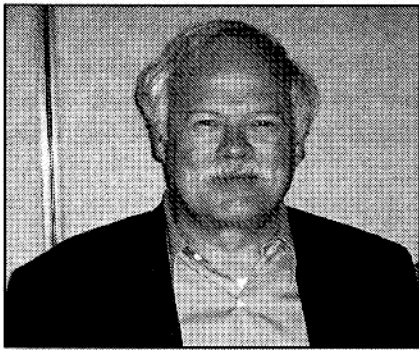
Continued on page 11



PSR Officer Elections

Candidate Statements

PSR President



Ben Sevier: Hi, I'm currently the editor of the "PSR Dispatch", which you are currently reading, and candidate for the position of President of the PSR. Being the editor of a hobby newsletter is a great way to learn much about the way an organization works, and, even better, a fantastic way to meet lots of very interesting people that help make this hobby enjoyable (beyond the trains and models themselves).

I've been involved with the NMRA for over thirty years, both as a regular member and as a volunteer. To me the value of this organization is as a sort of umbrella for the many and varied people and interests covered by the term "model railroading". There are plenty of specialty groups for each unique interest in the hobby, but only the NMRA is set to act to represent the hobby

without being tied to one period, type of railroading or scale. I've been using this philosophy at the Division level, where we are beginning to see increased participation from all types of model railroaders, and if elected to the position of President of the PSR I would continue to stress a theme of inclusion.

Qualifications: I've been a modeler since the age of six, and a model railroader from the early teens. I've been part of the NMRA since 1972, and an active volunteer since 2000. Currently I'm the Superintendent of the San Diego Division and the editor of the Division Newsletter. I was the Registrar for the 2002 PSR Convention, and am involved in the "Back to the Future in 2006" convention in San Diego.



Don Stewart: One of the things I enjoy most about the Region and the NMRA is the people. The camaraderie and friendships I have made will last throughout my life. I enjoy seeing old friends at the Division and Regional meetings and thus want to strengthen the communication and friendship throughout the PSR. Meetings and other NMRA events are an important way to continue developing new friendships and I will encourage them throughout the Region. This is a fun hobby. Let's have fun!

Qualifications: Don knows all aspects of the hobby as he has been involved in modeling and specifically model railroading since childhood. He is active in his Division and Regional activities. His involvement with the NMRA started in 1976. Don has been a member of the PSR since its inception in 1984 and previously in the PCR. He has been the Arizona Division Director several times, most recently September 2003 to September 2005. Don has been the Achievement Program Manager for the PSR since 1998.



PSR Officer Elections

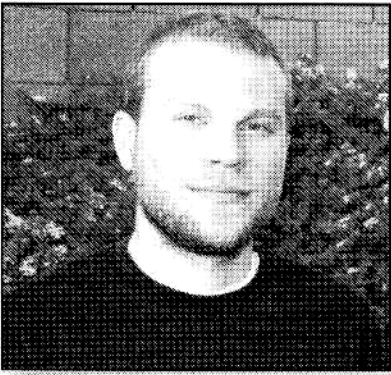
Candidate Statements

PSR Vice President

Bill Mergard: HELLO! I'm Bill Mergard and would like to serve you as the PSR Vice President for another 2 years. In the past I have served as the Chief Clerk/Paymaster of the L. A. Division for 4 years, the Director for 4 years and the President of the PSR for 4 years. I have worked several PSR convention and was the chairman of the 1996 NMRA National convention held in Long Beach. I have been active in the division assisting at meets and trains shows.

I would appreciate your vote but by all means please vote.

Happy modeling,
Bill



Charles Stewart: My name is Charles Stewart and I have been a member of the PSR and NMRA for 12 years. In those years I have helped judge in the contest room on a divisional, regional and national level. I have also presented clinics for meets and conventions and served on convention committees. I am a member of The Friends of the Cumbres and Toltec Scenic railroad and spend time during the summer to help preserve a functional historical prototype for all rail enthusiasts to enjoy. Recently I was elected president of the local club I belong to and currently serve in that roll.

Please think of me when thinking of Vice- President for the Pacific Southwest Region. I look forward to helping preserving the hobby and making sure that the members of this organization are heard, action is taken and ensuring that the hobby remains pleasurable to those involved.

Design & build simple multi-functional mechanisms to operate forklifts, bulldozers, cranes, and other applications with a single motor.

Operating Grade Crossings – Jim Thacker

Learn how to build your own operating grade crossings complete with lights, bells, and gates. If time permits, Jim will also cover scratch building chain link fence.

Operating Your Railroad Or Simply Running Trains?

– Joel Shank

This is an introduction to modeling prototype operations with tips on car forwarding and getting your railroad prepared for operating sessions.

Passenger Equipment & Operation – Andy Sperandio

Model Railroader Magazine's executive editor will be using excerpts from his new Kalmbach book for his presentation on passenger train consists and operations.

Passenger Train Consists – John Fiscella

Information on obtaining, interpreting, and using consist information for modeling passenger/mail express trains. Info data bases and "how to" examples will be provided.

Plans from Photos – Gary Robinson

Learn how to take and use photos of buildings and railroad equipment for creating modeling plans. Methods of estimating unknown measurements will also be shared.

Prototype Operations

– George Boggs

This clinic will explain prototype operating rules and how they can be applied to model railroads for more realistic operation.

Pulpwood Loading Yard Operations – Gary Robinson

The study of the layout and operation of truck to rail transfer at a pulpwood yard in Vass, NC. Topics include operation, necessary structures and recommended available kits.

Railroad Signaling – Wayne Penn

This professional railroader will explain prototype CTC / ABS systems and discuss some of the commercially available products for installing model systems.

Researching Your Model Railroad – Gary Robinson

How to move from a train set to modeling your favorite prototype by using a variety of research resources for text, maps, and photos.

Rock Formations from Redwood Bark – Duane Buck

This "hands on" clinic will allow you to make and paint

your own rock formations made from bark and contrast it with rock castings made with plaster.

Santa Fe's Fabulous "F" Units – Jim Fuhrman

A historical perspective of the evolution of these interesting engines including the FT, F3, F7, F-9 and CF7 rebuilds along with some outstanding modeling hints and ideas.

Southern Pacific Freight Cars – Tony Thompson

This Signature Press editor and author will be presenting some of his latest information from his series of books on SP freight cars.

Scale Lighting Made Easy – James Shourt

This clinic will demonstrate a wide variety of lighting effects including camp fires, lamps, fireplaces, forest fires, neon signs, chase lights, beacons, strobes, and more.

Scenery Secrets – Burton & Patricia Maxwell

The Maxwells will demonstrate how to use perspective composition and variety to make your scenes look real from back to front.

SDNR Coaster Commuter Train Expansion

– Mitch Alderman

Power Point presentation on current & future

infrastructure projects including bridge replacements, double tracking, and a demo of Rail Traffic Controller software.

The Elevator – Dick Roberts

Need to move from one level to another with no room for grades or helixes? Dick has created a new option and will explain how to do it.

Talking Hot Box Detectors for Your Layout

– Bryan Hunnell

The purpose and history of these detectors will be explained with a review of products available that reproduce train speed, axle counts, and random effects for model railroads.

Walt Disney's Railroad Story I – Michael Broggie

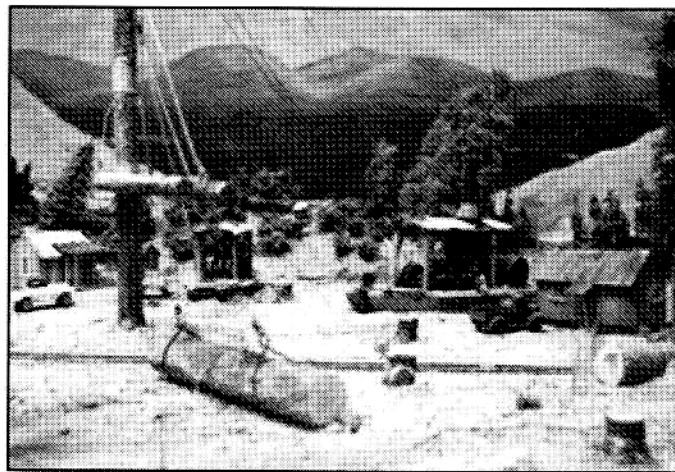
This noted Disney historian and author will provide a presentation on Walt Disney's love affair with trains from his modeling efforts to prototype operations at his theme parks.

Walt Disney's Railroad Story II – Michael Broggie

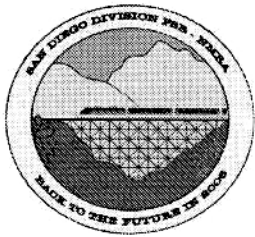
This session will be a continuation from Part I.

Weathering Freight Cars – Dave Arendes

This clinic will demonstrate how to weather a freight car using an air brush with acrylic paint and other mediums.



On the Layout of Burton Maxwell (HO_{n3})



BACK TO THE FUTURE IN 2006

Pacific Southwest Region Convention

October 11th through 15th, 2006

Dave Balser Layout Tour Chair

"John Allen is alive and is living in Bob Treats garden!" When you see the "fine scale" outdoor model railroad of Bob Treat you imagine the master has resurrected himself and is performing his magic again on this spectacular layout. Bob is an artist and designer for the Disney empire, and the influence of John Allen, John Olsen, and Malcolm Furlow are evident in the scenes of the Snow Creek Railroad. Bob's layout can be previewed in the June 2002 issue of "Model Railroader", the November 1996 and January 1997 issues of "FineScale Railroader", and the October 1995 issue of "Garden Railways Magazine".

We will also be visiting another scale outdoor railroad created by Steve Siedensticker. Steve lives near the San Diego Model Railroad Museum (of which he is the President) and has regular operating sessions. The layout also incorporates the "Time Saver" switching puzzle to bedevil his operators. Steve has hand laid all his track, and the equipment and scenery are true to scale and not "garden variety". Two outdoor railroads well worth visiting.

Two of the layouts at the world famous San Diego Model Railroad Museum have agreed to host attendees of the convention to an operating session Thursday night, October 12th from 7:00PM to 10:00 PM. The 'N' scale club, San Diego Society of N Scale, and the "HO" San Diego Model Railroad Club have invited conventioners to bring their own equipment and run it on these two great layouts. You can bring DC or DCC as the layouts are wired for both. Tune up your best equipment, clean all those wheels, check your couplers, and bring that 50 car unit train you have always wanted to run somewhere. Refreshments and fellowship will be plentiful.

A "King Of The Scales" layout tour will take place when Nelson Rath, Ray Dinsen, and Grant Beals open the same night to display their very large 'O' scale layouts. If the sights and sounds of Big Boys,

Challengers, and Cab Forwards rolling along pulling long freights turn you on then this is the tour for you. This threesome has more model railroad years under their belt than most, and they are fun to be around to share stories about the history of our hobby and the tricks of the trade. Veteran modeler Williard Jones would have been the fourth 'O' scale layout on the tour but he recently auctioned off his layout. Williard will be on hand to help out and is a wealth of information.

Speaking of 'O' scale, be sure to drop in on the gang at Max Schwanda and the PA, Reading, & Seashore Lines, but only if you want to grab a throttle and run a train. Visitors are always put to work running trains on a fast clock and the action is fast and furious and a lot of fun. This layout is a point to loop operation with a turntable at each end. The layout is completely finished and should not be missed.

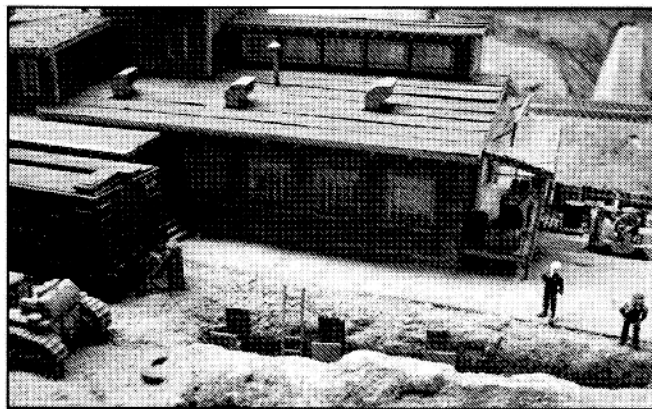
For all of you folks with small fingers we have some excellent 'N' scale layouts to visit including Rodger Gredvig, MMR, Mike Komisinski, and Don Fowler.

Rodger's Lode Stone & Iron has been featured in Model Railroader and over a dozen issues of "N Scale" magazine and he is a master in animated effects for model railroads. He has an operating horse head oil pump, moving mine skip, operating saw mill, rotating windmill, signal lighting, and sound effects.

Mike Komosinski's Needles District of the AT&SF

was featured in the September 2002 issue of "Model Railroader" and runs from Barstow to Needles. The era is 1981 in the heyday of FP45's, U-Boats, GP's, and SD's. The layout is fully scenicked and is a train watchers dream.

Don Fowler has created a model of the Colfax Division of the Southern Pacific between West Colton and Colfax during the 1975 to 1995 time frame. I think it



On the Layout of Dick Trotter (HO)

is one of the finest examples of layout construction in San Diego. The attention to detail and realism is second to none and includes sound, lighting effects, including moonlight,

and block lighting. These three layouts could convince you to change scales!

We are not forgetting the narrow minded bunch! Steve Harris is building an excellent rendition of the RGS in Hon3 in an office trailer parked next to his home. Prior to your visit you should take a peek in the November 2004 issue of "Model Railroader". Steve is a master at structure building and weathering and has given many clinics at conventions over the years. His layout is on two levels, is DCC controlled and the newest addition is SoundTraxx Tsunami. Steve is a prolific author and has been published in "Model Railroader", 11/2003, and in the following issues of the "Narrow Gauge Gazette:" 09/98, 03/99, 01/01, 03/01, 03/02, 11/05, and 07/06.

Burton Maxwell has constructed an 'Hon3' model of the Westside Lumber Company set in the 1950 to 1960's era. The layout looks like it has at least 2000 trees and is a text book example of how to build scenery. Burton's wife Pat painted the backdrop and has played a big part in the layout. Burton has been modeling for many years and on his layout you will find logging trucks he has carved by hand out of wood and "scratch built" models of all of the Shays the Westside had on it's roster. The spar trees with rigging actually operate and will unload a log from a log car. Come on down and smell the fresh cut lumber!

David Balser (that's me) models the Onion Valley Mining and Lumber Company, a freelance shortline in the Sierras in 1935. The last known photos are in the June 2006 issue of "Model Railroader". The day after the pictures were taken I dismantled the railroad, went over to the dark side and converted to On30. The HO version is gone, but since then I have installed EASY-DCC, widened all the roadbed and tunnel portals, and have 13 locomotives and 15 pieces of rolling stock running. By the time the convention is here I will have track down and trains running and a place for any 30" gauger to congregate. "Drop by and have some pie"

San Diego is a large place geographically and we have organized a tour up the I-15 freeway that will include 3 great layouts in one trip. First stop on the route will be John Sigurdson, MMR and his large 'O' scale and 'On3' "North Pacific Coast" railroad. John was a long time 'N' scaler, but recently sold his layout and expanded his 'O' scale to fill his entire building. The layout features both diesel and steam and has an 'On3' logging branch, a large snow shed, automated turntable, and many scratch built structures and hand built trees. Second stop on the trip will be Jay Styron and the 'HO' scale Fryant Branch of the Southern Pacific.

This portion of the SP ran in the Fresno area and serviced the wineries and other small industries of that region. Jay's craftsmanship is A+ and his DCC locomotives will run for hours on perfect track work without a hitch. Last stop on your trip will be the 'Hon3' RGS of Steve Harris that I have previously mentioned.

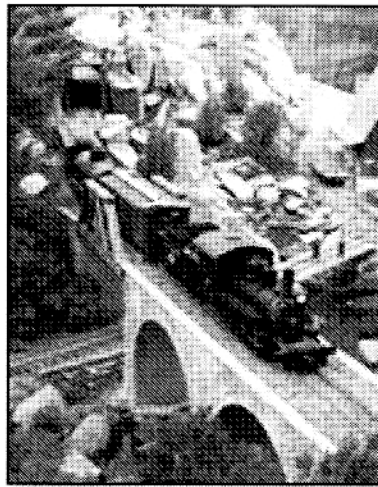
The majority of us model in 'HO', and some of the best layouts in the country are in San Diego. Dick Roberts is modeling the "Nevada County Narrow Gauge" in standard gauge. In other words, he is pretending the NCNG continued on but ripped up the 3' track and re-laid the 4'8" variety. The unique aspect of Dick's design is the "mushroom" style of bench work. His layout takes up almost every cubic foot of his garage as you climb the ramps to follow your trains. Some folks have gotten lost! For the train to climb from the lower elevation to the upper

elevation most modelers would build a helix. Dick came up with a better idea and built an "elevator". The train stops on a section of track and without pushing a button the track moves vertically about 3' and perfectly aligns with the next level and takes off again. Words can not explain, you must see it. The elevator is only one of many great modeling projects on this "can't miss" layout. There will also be a special limited operating session during the convention.

Up the road is the "Coyote Pass & Northern" of Dick Trotter, an 'HO' scale railroad famous for its weekly operating sessions. Dick has been a pioneer in operations and has recently switched over to "RailOp". The layout has been expanding for many years and the quality of work on the structures, rolling stock, and scenery are superb.

Art Dominy lives on the coast in Del Mar and his "DeBoise Western" 'HO' scale layout has been a labor of love for he and his son Lou for the last 20 years. The layout is in a special built room in a basement, is completely scenicked with the trains running through the mountains and over some great trestles and bridges. This transition era railroad has SP and AT&SF equipment and Art takes great pride in detailing the interiors of his foreground buildings. If you like to talk about old railroad china and flatware, Art is an expert.

Well, I have only told you about some of our layouts, and the biggest decision will be which ones to see in the time you have. Some layouts will be open from 10:00 AM until 3:00 PM and others will be open from 7:00 PM until 10:00 PM. We are a pretty friendly bunch so if you miss a layout I am sure we can make arrangements the next time you travel south. We want to see your layout too!



On the Layout of Bob Treat (G)



BACK TO THE FUTURE IN 2006

Pacific Southwest Region Convention

October 11th through 15th, 2006

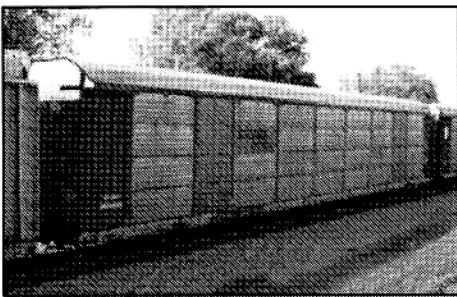
Bob Moore Prototype Tours

We have several very interesting prototype tours and events planned for your enjoyment.

The first is the San Diego Trolley, Inc. (SDTI), which initiated the "light rail revolution" in the United States as it became the first such type system when it began revenue service in 1981. Beginning as a 15 mile line between the International Border at San Ysidro and down town San Diego the system has grown to three lines with 51.1 track miles and 53 stations. Your tour will include seeing facilities for the maintenance of equipment, for the upgrading and renovation of equipment, and the dispatch center that daily controls the movement of 100,000 - 110,000 riders and has handled 342,000 riders in a single day. As a bonus you will see a PCC trolley that is being renovated to operate in the down town San Diego Gas Lamp district. The tour will require about two blocks walking but places are available to rest or bypass parts of the tour.



Next will be a very interesting trip to an operation that is not well known, but is potentially of much interest to railroaders - the PASHA ship to rail facility at the south end of San Diego Bay. This facility is the terminus



for the largest RORO (roll-on, roll-off) ship in the world, and is responsible for both bringing in thousands of vehicles from Asia monthly and transporting

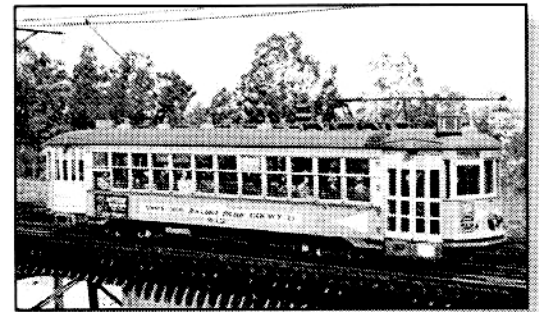
vehicles to and from the mainland to Hawaii. This facility has a very extensive ship to rail transferal operation, filling long lines of autorack cars that are changed out every night by the BNSF. This tour will take you through the entire process of this interesting

multi-modal operation - you will be impressed. Limited number of seats.

For rail fans (as we all are, of course), we will have an excursion train through Mexico. This trip will begin with a bus ride down to the border, a short walk across the border where you will board passenger cars of the Carrizo Gorge Railway, and a trip through the northern part of Baja California to the town of Tecate BC, an interesting ride that not many get to see. In Tecate you will get a tour of the world famous Tecate Brewery, lunch, and a chance to walk (and shop) around the downtown area. You will then walk across the border and board the bus for a ride back to San Diego. This tour will take most of the day, but we think you will find it an interesting and informative adventure.



Finally, we offer the Traction SIG tour (Not to be confused with the San Diego Trolley Tour). The San Diego Electric Railway Association is housed in and on the property of the restored historic National City Depot. Their goal is to preserve the artifacts and equipment of the San Diego Electric Railway and serve to show the important roles street cars, interurbans, and electric railways played in the development of the San Diego area.



The museum has five trolleys (non operational) being restored toward operation, many historic pictures, a model railroad, and a book store with an extensive collection of traction books for sale. Also a member who is a walking history book will be present. Across the street is a turn of the century (19th) trolley restored by the Port Authority. An additional bit of information for rail buffs, the National City Depot was once the western terminus of the Santa Fe preceded by the California Southern.

Looking forward to riding with you!

Flag Stops

Lindsay Smith, PSR Member Aid
wlindsays@adelphia.net

If you send the club notices to me at my address, wlindsays@adelphia.net, I will pass them off to the Coupler and Dispatch editors. I also send the data on to Dick Greatorex for the NMRA web pages. Anyone can copy and reprint my stuff to promote the hobby, rail travel, RR history, and railroad safety.

2006

JUNE

- 17, 18 OERM Pacific Electric and Father's Day Weekend. Orange Empire Railway Museum, 2201 South "A" St., Perris, CA. (951) 943-3020 www.oewrm.com
- 24 Twentynine Palms Train Show & Swap Meet. Twentynine Palms Elks Club and the Cajon Division. <http://www.cajondiv.org/Documents/29Palms%20Meet0606.pdf> For vendor, club display or other questions, contact John King at 760-367-0633.
- 10 to Jul 4 San Diego County Fair, Del Mar, CA 0900 to 2230 daily - Short Track RR Club N Scale module layout. Pete Steinmetz (760) 943-0590 petest50@att.net Visit www.sandiegodivision.org or email sddiv@sbcglobal.net for more information.
- 24 San Diego Division Layout Tour. 12:00 Noon - 3:00 p.m.. Poway Station MRC, Templer Hall, Old Poway Park, 14134 Midland Rd. Poway CA. More info and directions available in the Mail Hook and online at www.sandiegodivision.org.

JULY

- 2 to 9 NMRA Convention. Philadelphia, PA <http://www.nmra.org/2006/> The Mid-Eastern Region hosts Independence Junction
- 10 TTOS, SW Division Meet. Electric Toy Train Monthly Meet. 1130 a.m. start, auction at 12:30 p.m., drawing at 2:30 p.m.. Southwestern Division Toy Train Operating Society, Arcadia Masonic Center, 50 W. Duarte Rd. Enter on East side of building.. \$5 children under 12 free with paid adult. (818) 702-9588, www.cal-stewart.org, www.ttos-sw.org.
- 22 San Diego Division Layout Tour. Justin Rasas, San Diego. More info and directions available in the Mail Hook online at www.trainnet.org
- 29 "In the Heat" Railroad Swap Meet, North Phoenix Baptist Church, 5757 N. Central Ave.,

Phoenix, AZ. 9 – 2PM \$5.00 at Door. Tables \$20.00. (602) 336-0973. NPBC-Sr. Adults. David Jerry (602) 336-0973

AUGUST

- 6 Los Angeles Div. Board Meeting and Potluck. At Mary Barstow's home 6930 Clovercliff Drive, Rancho Palos Verdes, CA (310) 377-9762 pvpacific@cox.net .
- 12 San Diego Division Summer Meet & Picnic. Visit www.sandiegodivision.org for more information, or the Mail Hook online at www.trainnet.org.
- 12 Arizona Division Meet. Federated Community Church, 400 W. Aspen Ave., Flagstaff, AZ
- 26 San Fernando Valley Railroad Historical Soc. Slide Show. 10 AM (1000 PST), \$3.00 unless exhibiting. First Presbyterian Church, 510 East Fifth St., (@Olive), Burbank, CA. Jerry Weisman (310) 657-6321 weisman964@adelphia.net
- 26 Santa Susana RR Historical Soc. Swap Meet. 7 - 11 AM in the Santa Susana Park Pavilion. Admission \$2.00 for adults. Sellers contact Richard Parshall 805 526 0371; or oltnwtrn@pacbell.net 6 weeks before event.
- 26 Santa Susana Open House. 10:00 a.m. - 4:00 p.m. Simi Valley CA. HO layout and N modules. Santa Susana Depot is located at Santa Susana Park (Katherine Rd. Near Kuehner Dr. adjacent to and South of the railroad tracks, about 1 mile South of Los Angeles St. in Simi Valley). If coming from the I-118 it is the first right on Kuehner after crossing the RR tracks. For information contact Richard Parshall 805 526 0371; or oltnwtrn@pacbell.net. www.santasusannadepot.org
- 26 San Fernando Valley Railroad Historical Soc. Slide Show. 10 AM (1000 PST), \$3.00 unless exhibiting., Bethany Church, 2707 Glenoaks at Buena Vista, in Burbank CA. Jerry Weisman (310) 657-6321 weisman964@adelphia.net

SEPTEMBER

- 11 TTOS, SW Division Meet. Electric Toy Train Monthly Meet. 1130 a.m. start, auction at 12:30 p.m., drawing at 2:30 p.m.. Southwestern Division Toy Train Operating Society, Arcadia Masonic Center, 50 W. Duarte Rd. Enter on East side of building.. \$5 children under 12 free with paid adult. (818) 702-9588, www.cal-stewart.org, www.ttos-sw.org.
- 30 Great Western & Atlantic Trainshow. 11am – 5 pm. Costa Mesa, CA. \$8.00 www.gats.com

NMRA MEMBERSHIP APPLICATION - PSR

Please accept my application for membership renewal or new membership in the NATIONAL MODEL RAILROAD ASSOCIATION, which includes the PACIFIC SOUTHWEST REGION and my local PSR Division.

New
 Renewal
 NMRA #
 PSR #

Name			
Address			
City	State	Zip	
Phone	Birth Date	Scale	
Email	Occupation		

<i>NMRA Membership Type - circle your choice of options</i>	1 Year	2 Years	Total
Member - All rights and benefits - does not include NMRA Scale Rails	\$33.00	\$66.00	
NMRA Scale Rails subscription - Must be an NMRA member to subscribe	\$12.00	\$24.00	
PSR Dispatch subscription - Must be NMRA member to subscribe	\$8.00	\$16.00	
Family - Spouse or minor child of above member in good standing. No NMRA Scale Rails or voting rights. Provide family members name and date of birth here: Name: _____ DOB: _____	\$9.00	\$28.00	
Student - any person 18 yrs and under or student between the ages of 19 - 25 yrs possessing valid student ID. All rights and benefits and NMRA Scale Rails	\$22.00	\$44.00	
Sustaining - Mandatory for group memberships (Clubs, Associations, Businesses). All rights and benefits and NMRA Scale Rails	\$90.00	\$180.00	
TOTAL DUES AND SUBSCRIPTIONS PAYMENT ENCLOSED (Make checks payable to NMRA)			

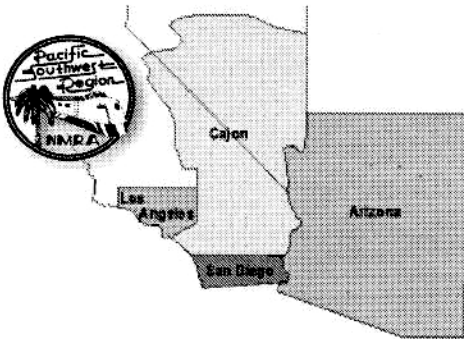
Credit Card	MasterCard	VISA	AMEX	Diner's Club	Discover
Card #			Issued To (print)		
Expiration			Signature		

Month Year

MAIL TO: Debbie Draper, Membership, 10837 N. 34th Place, Phoenix, AZ 85028-3310



Official Publication of the
Pacific Southwest Region
National Model Railroad Association®

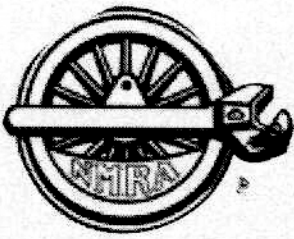


PRSRT STD
 U.S. POSTAGE
 PAID
 SAN DIEGO, CA
 PERMIT NO.751

POSTMASTER: Please send address changes to:
10837 N. 34th Place, Phoenix, AZ 85028-3310



PSR 2006 Convention
 San Diego, CA
 10/11 thru 10/15, 2006



OFFICIAL BALLOT PSR OFFICERS



See the Candidates Profiles on pages 6 and 7 of the 2nd Quarter, 2006 "PSR Dispatch".

Check the box next to one name for each position. To enter a write-in vote, check the Write-In box, and write the name on the line below.

Ballots incorrectly marked or late will not be counted.

All ballots must be postmarked no later than July 8th, 2006
and received no later than July 22rd, 2006

President - Check One

Ben Sevier

Don Stewart

Write-In

Write in ⇒ _____

Vice President - Check One

Bill Mergard

Charles Stewart

Write-In

Write in ⇒ _____

The Pacific Southwest Region of the NMRA® is made up of Arizona; Imperial, Inyo, Los Angeles, Mono, Orange, Riverside, San Bernardino, San Diego, and Ventura Counties in California; and Clark, Esmeralda, Lincoln, and Nye Counties in Nevada. All NMRA® members in good standing residing in those counties are members of the PSR. All members (other than those holding youth or family memberships) are entitled to vote for Region Officers and Directors (PSR By Laws)

The President, and Vice President shall be elected by the membership of the PSR and shall hold office for a term of two years beginning at the annual meeting of the PSR in even years. The President and Vice President may not succeed themselves more than once in the same office. (PSR By Laws)