



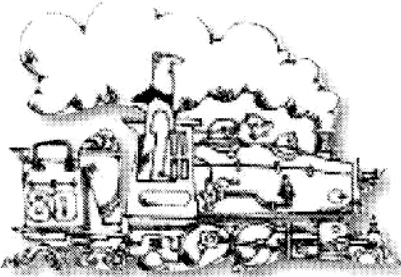
# PSR Dispatch

## PACIFIC SOUTHWEST REGION

National Model Railroad Association®

VOLUME 25, ISSUE 2 — 2ND QUARTER, 2007

© 2007 Pacific Southwest Region, NMRA®



Another year half-way over! I don't know about you, but the years seem

to go by faster and faster! Despite my best efforts, there's never enough time between work, home and hobby to get it all done, as my boss, wife and hobby friends are wont to point out. And my friends who have retired say that retirement doesn't mean more time, just more activities! Ah, well, just means I have to prioritize, I suppose, and find more time to do the things I enjoy, like work on my layout and participate in operating sessions on other layouts.

Lot's of things going on around the Region! First, and importantly, it's time for Division Director elections. According to the By-laws of the PSR "The supervision, creation and territory of the Divisions shall be under the authority of the PSR Board of Directors and regulated in accordance with the Manual of Operations." Which means that your Division Director is an important part of your local organization as well as the PSR, and is your

## From the Hot Seat!

Ben Sevier, PSR President  
psrprez@hq.nmra.org

representative at the Region level. So, make sure you vote, and send in your ballot according to the printed directions. By the way, since all NMRA members in the PSR area are entitled a vote, this issue of the PSR Dispatch (with ballot) is being sent to all current members regardless of whether or not they subscribe to the newsletter. If you are one of those who doesn't subscribe, please look over this issue, and consider keeping up with the PSR and your Division activities through a subscription.

Several people commented to me about a problem in the last issue of the PSR Dispatch, namely the volume number and date - my apologies. When I begin work on a new issue, usually the first thing I do is change the masthead and dates - missed it somehow. So you ended up with 2 issues that claim to be for the last quarter of 2006, but obviously aren't the same issue.

Are you aware that getting articles published in the PSR Dispatch counts toward the Author's Certificate in the AP program? Are you interested in writing about this hobby, getting your ideas and techniques out for others to try? Would you just like to see something you wrote published where the world can see it? Whatever your reason, interesting articles about model railroading are welcomed by both the Division and Region newsletter editors. I would really like to see submissions for the PSR Dispatch, and the criteria are not as stringent as those for the commercial hobby press - but you don't get paid, either, at least not in cash. If you are interested in publishing your ideas, check out the requirements on page 15, and get writing!

September is fast approaching, and with it the annual PSR Convention in Tucson. If you haven't done so, get your registration and "extra fare" requests in today! It looks like it's going to be a great time, with lots to do and see, chances to meet new people, and see old friends. I'm planning to be there, and looking forward to seeing you there as well. 'Til then, have a great summer!

### In This Issue

Arizona Division .....	2
Cajon Division.....	2
Los Angeles Division.....	3
San Diego Division.....	3
Fireman's Seat.....	4
Contest Corner .....	4
Railettes .....	5
Acheivement Program .....	5
Secretary's Report.....	6
Director Candidates Statements .....	7
"Copper Trails - Silver Rails" 2007 Convention .....	10
"Copper Trails - Silver Rails" Registration Form.....	11
Flag Stops.....	13
PSR Directory .....	14
Membership Form .....	BACK PAGE

# Division Director

## Arizona

Duane Buck  
buckgnry@msn.com



The Arizona Division finished 2006 on a high note and started 2007 on an even higher note. There were 103 registered attendees at the Division meet in Phoenix, on March 3rd. Additionally, 15 new members joined the NMRA at that meet. The contest program continues to enjoy good success with new entrants and new judges participating in each successive meet.

The Arizona Division hosted the mid-term PSR Board meeting in Tucson, on March 24th. For those of you who are not familiar with the Board meeting process, the mid-term Board meeting is conducted at the upcoming PSR convention site each year. This offers the regional officers an opportunity to view and familiarize themselves with the facilities for that year's annual convention.

The one topic that received the most discussion at this recent Board meeting was that of recruiting new members and how to entice current members to step forward and volunteer to fill positions of responsibility within the PSR and the individual divisions. As one who belongs to 12 fraternal organizations, I know that there is no easy answer to these problems. There will always be those who may have unfavorable impressions of the NMRA and those members who will not actively participate as a volunteer. Although, a number of ideas were mentioned, there was no consensus, except on how to tackle these problems. The one thing that we could all agree upon, was that promulgating information regarding the benefits of NMRA membership and emphasizing personal satisfaction of helping the organization and fellow modelers was essential. Many of us who hold positions of responsibility are getting older. We have held these positions for a significant number of years and at some point will want to step away. The answer in most cases is bringing in new and younger members to perpetuate the PSR and the four divisions. Many of you can, by "talking up" the NMRA, and be volunteering to assist, even in a small way, can ensure the future success of your region and division organizations.

The next Division meet is scheduled for June 2nd, in Sedona. Come join us for this event. If you have never visited the Sedona area, you are in for a visual and

## Cajon

Carl Heimberger  
CHeimberger@anaheim.net



This past March I attended the mid year PSR Board Meeting in Tucson, and the Arizona Division has done a stellar job in obtaining a first class hotel for this years convention. The Arizona Convention Team presented their finalized convention plans, which includes numerous outstanding clinics, layout tours in all scales, prototype tours, a Chinese Auction, and Awards Banquet. I would highly encourage any Cajon Division member who has not signed up for this convention to do so now, and enjoy the fellowship of other Model Railroaders.

While I am on the subject of Conventions it is not too soon to start thinking about the NMRA National Convention in Anaheim 2008. The LA Division of the PSR is heading up the local organizing committee but to make this convention a success it will take a commitment from all the PSR Divisions. Numerous volunteers are needed to run various aspects of this convention and two Cajon Divisions Members have taken on the task of organizing the volunteers. So please help Joe Villaryo and David Arendes succeed by committing to help.

The PSR Board is also concerned about the issue of non-growth or declining growth within the NMRA not only locally but nationally as well was. But one had to only look around the room at this board meeting to understand the problem; with the exception on one board member all the other board members are either retired or will be within the next few years. Our challenge if we want to keep this hobby viable will be to reach out and find ways of being younger members into the organization. When is the last time you had the guts to hand a wireless DCC throttle to a kid at a train show and allow him or her to run your new Big Boy pulling 85-PFE cars? Well if you haven't maybe you should.

Another hot topic discussed was the rising cost of producing and mailing the Division and Region News Letters. Being the dinosaur I am I still look forward to receiving something in the mail besides bills, but from a practical perspective it makes a lot of sense to distribute these publications by e-mail. I think all the Directors would like to have some feed back from the membership of each division as to how the membership feels about this issued. Would you be willing to pay the additional

# Activity Reports



## Los Angeles

Paul Cutter  
patecu@sbcglobal.net



## San Diego

Don Fowler  
Donald.Fowler@sdssheriff.org

On April 14 and 15 we had a successful public model train show at The South Coast Botanic Gardens located in the Palos Verdes Peninsula.

At the mid-year PSR Region board meeting held in March, there was a discussion on the Division's newsletters. The costs of producing and mailing the Coupler (L.A. Divisions' newsletter) is the single biggest cost to the Division. It also appears to be the same with the other Divisions in the Region. One region is only mailing out their newsletter to members that request a mailing as all Division Newsletters are on the web.

I would appreciate hearing from as many L.A. Division members as possible as to their views on receiving the Coupler in the mail or viewing it on-line. Remember, this is your chance to have your views heard. Otherwise the Division Committee will make the decision for you. My email and fax numbers are listed on the directory page of this issue.

Don't forget the region convention in Tucson this year. The Tucson committee has a wonderful schedule of events and clinics planned. Now is the time to sign up, if you haven't already done so. Hope to see you there.

Arizona - Continued from previous page

uplifting treat. For those of you who are familiar with Sedona, you can take in the breathtaking scenery once again.

The 2007 PSR convention preparations are complete, except for some small details. Tucson offers an excellent convention site with lots of prototype and model railroading activities. Register now and come join us for the "COPPER RAILS-SILVER TRAILS" convention, September 5-9. You'll have a great time!

Cajon - Continued from previous page

cost to the Region and Divisions to have the news letter/publications mailed?

And finally it is that time again when each Division need to elect or re-elect a Director. So if you have someone in mind we need you to nominate him/her or you can nominate yourself. This is a volunteer organization so don't be bashful.

PSR DISPATCH — 2nd Quarter, 2007

Things have been busy here in San Diego lately. On February 10th the San Diego Division hosted its annual Winter Meet at the Antique Gas & Steam Engine Museum in Vista. We enjoyed a great swap meet, pot luck, clinics and a tour of the Short Trak Club's progress on their permanent layout. This is shaping up to be another fine N scale layout showcasing the many talents of their club members.

On March 24th, PSR President Ben Sevier and I attended our mid-year Board of Directors meeting at the Sheraton Tucson Hotel & Suites, the site of our upcoming Regional Convention. It's a very nice facility and the room rates are quite reasonable. Based on the progress report provided by the Convention Committee, we're in for a great time, and you won't want to miss out on the festivities.

At the meeting we discussed the current state of our membership and strategies to attract new members. Some of the ideas included programs for youth, better networking with local clubs, and philanthropic endeavors to benefit our local communities. One idea was to build a small layout during a convention as a series of "hands on" clinics and then donate it to a local children's hospital or youth club.

It was also suggested that we take a look at other organizations to see what membership strategies are working for them and try to adopt them for our own use. How about a contest that offers a free Division sponsored six month membership to our new prospects and a prize at the end of the year for the member who recruits and signs up the most new people? If you have some ideas, please share them with your Division Director.

Back to Division business, on April 21st we were invited to join the Poway Station's HO Modular Railroad Club for a public display. Division members were invited to operate their own equipment on the modular system. On the same day and location, the Poway-Midland Railroad ran their live steam engine to commemorate its 100 year birthday. We enjoyed strong Division attendance and an appreciative response from the public who attended.

# Fireman's Seat

Charles Stewart, PSR Vice President  
mrlces@cox.net

How many young model railroaders do you know? With so many distractions in life these days it is hard to keep kids interested in building models and attending conventions. For kids, the thought of playing a video game is much more enjoyable than having to put a 3D puzzle together. I would like all of you to think back to what got you involved in model railroading or trains in general. Was it the fact that your father or grandfather took you to watch the trains roll through your home town, or was it that first time you got to ride the rails for yourself? We all have something that made us want to be a part of this wonderful hobby, but the question now is are we doing all that we can to give the youth of today the same opportunities that sparked your interests. I do not know of a child that did not like trains at some point in life. If any of us could take a child under our wing at that time and give them the encouragement and enjoyment of the hobby then they will be far more likely to want to stay in the hobby or return to it when they are a little older and settled in life. The exposure at a young age is key in my opinion.

I ask you all please, when you see a young, interested model railroader, to do what you can to help them stay enthusiastic about the hobby. I suggest building a model with that youth, or sitting trackside with them and explaining to them why trains make up such an important part of everyday life. Tell them what each car carries and why each rail car is designed the way it is for what it carries. There are so many options when it comes down to it I just hope that I might help get some people started. If you have any questions or comments please contact Charles Stewart, PSR VP. The information can be found on page 14 of this issue.



# Contest Corner

Duane E. Buck, PSR Contest Chair  
buckgnry@msn.com

All NMRA organizations, whether on a national, regional or division level, follow the same model construction contest judging guidelines. However, the NMRA does allow some autonomy regarding the contest format. As an example, the national contest format has all models (scratchbuilt or kitbash) contained in single categories, i.e., steam locos, freight cars, etc., while the PSR contests have a dual contest format described as "Open" and "kit". This dual contest format provides a greater opportunity for contestants to win an award. General criteria for determining if your model should be entered in the "Open" contest or "Kit" contest are as follows:

1. Open. If your model is 50% or more scratchbuilt, Or if you feel that you have added a significant amount of additional detail, or have made major modifications to a basic kit model, then your model should be entered in the "Open" contest.
2. Kit. If your model is based on a kit that does not have a lot of additional detail and has a minimum of scratchbuilt components, then the "Kit" contest is for you.

If you are in doubt about which contest to enter, then consult with me or other contest room personnel and we'll try to point you in the right direction.

From recent questions I've received, there still seems to be some confusion about print entries in the photo contest. We use the standard NMRA format for these entries. Let's review the categories and format requirements. There are four print categories, color model and prototype, and black and white model and prototype. The prints must be mounted on flat, rigid board or matted with similar material—no folders or glass frames allowed. Photo and mount may not exceed 12" x 16" (30 cm x 40 cm) in size. Minimum mount size is 8" x 10" (20 cm x 25 cm) and the minimum print size is 5" x 7" (13 cm x 18 cm). It is highly recommended that you mat your prints for the best presentation.

Okay, ladies and gentlemen and boys and girls, it is time to stop thinking about preparing that contest entry and to complete the project. Only four months left until the 2007 PSR convention contest.

Best Regards, Duane



# Railettes

Janet Spooner, Railette Chair  
jspooner86@aol.com

Ladies, if you were not in San Diego for the 2006 PSR convention you really missed out on a wonderful experience. Kim Fowler, our hostess, is truly a warm, funny and wonderful lady. In fact I have her giving 2 clinics for us in Tucson. In addition, our own talented Anna Taylor is giving 3 clinics on her specialty, "Origami." She has the knack of making it easy even for those of us that are all thumbs.

We will also be having clinics on scrapbooking, jewelry making, , crocheting, and putting together what I call shelter gifts. We will be taking washcloths and those complementary soaps and shampoos from hotels and making them into something women having to go the shelters can use for their basic hygiene needs. Arliss Powell will be talking to us on what to do if we end up inheriting a railroad.

We will start off the convention with a welcome meeting with coffee and goodies followed by a Lemon Lay-off. If you have never been to one of these all you need to do is bring a "white elephant" gift that is wrapped. This gift will go home with someone who may think it is the treasure they have always been trying to find. If everything you have is a treasure don't worry we will have a few wrapped items for general distribution. If the gift you end up with is truly bad there will be receptacles for discarding treasures.

The luncheon on Friday will be at the hotel and you will have the choice of either a grilled flank steak fajita salad or a grilled chicken fajita salad. Just indicate your preference on the Extra Fare registration form. There is a \$5.00 charge so the hotel can be given a correct count and the convention does not have to pay for extra meals.

It was noted that every time people passed the Railette Room in San Diego the sounds of laughter, talking, and excited voices could be heard. We were having fun. Stop by the Railette Room at the Tucson convention and see what you have been missing.



# Achievement Program

Don Stewart, AP Program Manager  
snpcw@cox.net

I will discuss the requirements for the Golden Spike Award in this column this time. The criteria states that the rolling stock displayed must be "scratchbuilt, craftsman, or detailed commercial kits", so lets take a look at this requirement a little closer.

- Scratchbuilt means you built the car yourself, no kit involved, all your own work except trucks, couplers and some detail parts.

- Craftsman means it is from a craftsman kit which includes brake details, standoff grab irons, etc. Some of the old wooden craftsman kits still have rudimentary brake gear so a little extra work is expected such as cleaning off the flash, getting the fuzz off the wood, adding brake lines, levers and rods. Today's plastic and wire craftsman kits have all the detail needed, you just have to build the kit, paint and weather it.

- Detailed commercial kits include shake the box kits up to the craftsman kits. In the shake the box kits such as the Athearn blue box kits, you must add additional details such as the brake rigging, standoff grab irons, and other details. Simply assembling and weathering an Athearn kit does not count for this requirement.

Ready-to-Run cars, even with weathering do not count. This includes N scale atlas RTR cars, many of the new HO RTR cars. So what do you do here? Build 6 kits and add details if they are not included with the kit. Weather the cars and proudly display them for the Golden Spike judges. These models can also be entered into contests as a bonus for your work.

Essentially, earning a Golden Spike Award is not simply showing your weathered RTR equipment on a ballasted layout. Some work is involved. However, I have found the work rewarding and the models improve as you go along. Try it, you will enjoy yourself and the modeling outcome.



# Secretary's Report



Board of Directors  
Pacific Southwest Region  
National Model Railroad Association

The semi-annual Board meeting of the PSR officers was held in Tucson, AZ, March 24, 2007. PSR President Ben Sevier presided over the meeting which was held in the boardroom of the Sheraton Tucson, site of the September 2007 PSR Convention.

The President's report centered on declining membership and rising postage costs. He stressed the need to recruit new members and encourage membership involvement in the NMRA.

Each Division Director presented an outline of past and future events in their respective Divisions. Topics centered on discussions of what types of programs attract and hold members, and how to improve and expand a Division.

Next each staff member presented reports on their respective areas. Presenting reports were: Membership, Railette, Achievement, and Historian.

#### **Old Business:**

2006 Convention committee presented their final report, and a check to the PSR as its share of the Convention income surplus.

2007 Convention committee gave the Board a tour of the facilities and outlined the program for the September Convention.

2008 National Convention. Bill Megard reported that key volunteer positions have been filled, everything is coming together but many volunteers are needed. It was suggested that a volunteer sign up sheet be inserted in all future PSR & Division newsletters leading up to the Convention.

President Sevier announced that he will be filling the position of Convention Coordinator in the near future.

#### **New Business:**

A discussion was lead by LA Division Director Paul Cutter on how to cut cost of the Division and Region newsletters. Printing and postage cost for Division and Regional newsletters have become a burden. All present believe that newsletters are an important tool in keeping members informed and as a tool in recruiting new members. Further study and gathering of additional information will be needed before any changes can be made.

No other business being placed before the Board the meeting was adjourned.

The next regularly scheduled Board meeting will be held at the Sheraton Tucson, Wednesday, September 5, 2007 at 1:00 p.m.

Respectfully Submitted  
Dave Irick  
Secretary - PSR  
dlikick@qwest.net



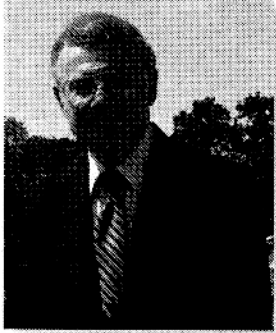
**2007 PSR  
CONVENTION  
COPPER TRAILS  
~  
SILVER RAILS**

**SEPTEMBER 5TH to 9TH,  
2007**



# Arizona Division

## Candidates for Division Director



**Duane Buck**

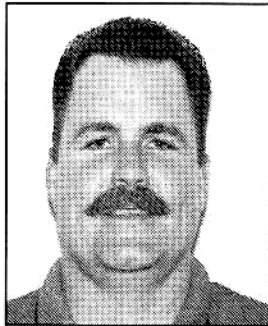
In seeking the Arizona Director position, I submit the following information: My name is Duane Buck. I have been a model railroader for 56 years and a life member of the NMRA and PSR/PCR) since 1969. I've served as the Arizona Division Assistant Contest Chairman from 1995 to 1999 and the Contest Chairman from 1999 to the present. Additionally, I've served as the PSR Contest Chairman from 2000 to the present. I'm also the Great Northern Railway Historical Society's current Modeling Editor. I founded the Modelers' Pages for that organization in 1992.

I bring managerial experience acquired from 27 years of service in the U. S. Navy as an enlisted man for eight years and a commissioned officer for 19 years. I was a weapons system consultant following my Navy career and acquired two degrees after returning to college. I served on the board of directors and as vice president of the GNRHS, an organization with 2400 members.

If I am entrusted, by you, with the office of Arizona Division Director, I will do my utmost to represent the best interests of the division membership, as well as those of the region. No matter who you vote for in this election, please vote. Let's have a strong showing and demonstrate that the Arizona Division really cares about the future of the NMRA in our area.

Thanks to all, Duane

---



**Rick Watson**

One constant in life is change. I'd like to be an agent of change for the Arizona Division. I entered model railroading at age 5 and have worked at hobby shops and custom painted since. I regularly operate on railroads around Phoenix and at operating events across the country. I'm helping friends construct their layouts while preparing to build mine.

We have the opportunity to make the model railroading community stronger by promoting the hobby. We need to open model railroading to those outside of railroad related groups who may not normally see model railroading. I help promote the hobby through my leadership with the Grand Canyon State Model Railroaders modular club. We display at events showing railroading to non-model railroaders, talking with the public and inviting visitors to operate trains. These volunteer events promote the hobby to new audiences.

My goal is to grow our division in membership and stature. We will accomplish this by setting goals and seeking new opportunities. I will look for new ways to bring in new Division members. I want folks to be excited about model railroading and the Division.

In demonstrating my commitment, I'm the new Spur Line Editor. I'm ready to take on more to help our Division grow. I think I can bring fresh perspective and new energy to the Director's role. However, I cannot do this alone. I need your vote to become Director and just as important, I need your input, feedback, and participation to make our Division great!

---

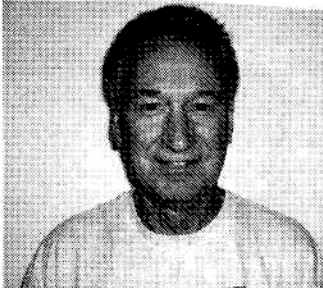
### NOTICE

Due to a misunderstanding, the Arizona Division Director candidates were included in the ballot distributed to the Arizona Division members with the SPUR LINE. This ballot should have included only the candidates for Superintendent and Chief Clerk & Paymaster. To vote for Arizona Division Director, please use only the ballot that is distributed with this copy of the "PSR Dispatch". No other votes will count in the election.



# Cajon Division

## Candidate for Division Director



Carl Heimberger

I am asking for your support for another 2 years as the director of the Cajon Division. A few of the accomplishments for the past 2 years includes a new look for the Order Board, the continuation of the Barstow Meet in spite of complications from the City of Barstow, elections for a Cajon Superintendent, and bridge building with the rest of the PSR Divisions. What is planned for the next 2 years? For one thing more planned Division events, the annual Barstow Meet although it may have a different look this year, and the 2009 PSR Convention. Planning is already underway for the 2009 Convention and we are looking at a whole new way of doing this event.

---



# Los Angeles Division

## Candidate for Division Director



Paul Cutter

My name is Paul Cutter and I am running for the position of Director of the Los Angeles Division of the NMRA. I feel that I am qualified for the position having served almost two years as the current Director. I have also served as Division Superintendent and Chief Clerk/Paymaster of the Los Angeles Division which has allowed me to know how the Division functions and its needs. I would appreciate your consideration and vote for this office.





# San Diego Division

## Candidate for Division Director



**Don Fowler**

It has been a real privilege to serve as your San Diego Division Director for the past two years. The best part has been enjoying the fellowship of our membership and getting to know you all a little better. At the same time, I endeavored to represent your interests and ideas to our the PSR Board of Directors. During my term of office, we have collectively worked to make our Division stronger and as a result, enjoyed the fruits of our efforts.

I took this position and your vote of confidence seriously so that the best interests of our membership were considered and represented at all times. Here are some of the ways that I feel I served you:

- Represented your needs & interests at the Region level by attending all meetings during my term, and brought forth ideas & concerns that I had discussed with our local membership.
- Attended and participated in all local Division activities.
- Assisted & supported our Regional Convention as Paymaster and Clinic chair. I was fortunate to work with a great convention committee, and our efforts really paid off with positive feedback and a surplus at the end.
- Introduced people to model railroading, encouraged them to join our Division, and mentored others in model railroading when given the opportunity.
- Hosted open houses, operating sessions and meetings in my home, a really enjoyable experience.

As we've proven, together we can do good things for our Division. Thanks for your support, and vote!



**2007: Detroit, MI**  
<http://www.nmra.org/2007/>

**GREAT LAKES EXPRESS 2007**

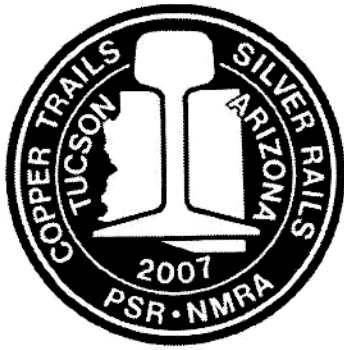
P. O. Box 336

Warren, MI 48090

Registration e-mail:

[nmraconventionregistration@charter.net](mailto:nmraconventionregistration@charter.net)

**Sunday July 22 thru Saturday July 28, 2007**



# 2007 PSR CONVENTION

## COPPER TRAILS ~ SILVER RAILS

### SEPTEMBER 5TH to 9TH, 2007

## An Invitation to Join us in Tucson for the 2007 PSR Convention

By Roger von Seeburg

Hello again. The 2007 PSR Convention Committee is working hard. We are about to review the first draft of a Special Edition of the *Spur Line* (the Arizona Division newsletter) that will be mailed to all NMRA members in the PSR territory. So watch your mailbox around the middle of March. An updated Registration form will be included with the Special Edition.

We are down to three to four clinic openings. If you are interested in presenting a clinic at this convention, get in touch with me. (rvonseeburg@att.net or 602.942.9549)

Both the Special Interest Tour (ASARCO Mineral Discovery Center) and the Prototype Tour (Arizona Railcar, Port of Tucson & LB Foster Company) are finalized and transportation identified.

There are currently 21 layouts identified for the layout tours. Clinics total 23, and cover prototype, modeling, DCC and Insurance and Estate Planning. Modeling With The Masters will have 3 five-hour clinics and 1 two and a half hour clinic (extra fare). The Railettes have 9 craft projects and one clinic, plus a Welcome Coffee & Doughnuts and a Friday Luncheon.

Additionally, there will be an extra fare Sabino Canyon Nature Walk – with three easy walking choices.

The Convention Hotel, Sheraton Tucson Hotel & Suites has set up a special web site for our convention. It is located at:

[www.starwoodmeeting.com/StarGroupsWeb/res?id=0609255077&key=EA6B0](http://www.starwoodmeeting.com/StarGroupsWeb/res?id=0609255077&key=EA6B0)

You can use this web site to register for your stay at the hotel.

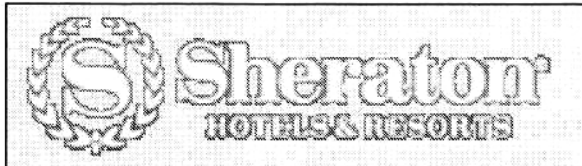
The menu for the Awards Banquet has been established and the details for the HOBBO Breakfast have been worked out. By the way, if you stay at the hotel, there will be no charge for the HOBBO Breakfast meal.

Work continues with the vendors for the convention car, convention pin and convention patch. Convention web site is: [www.psr-nmra.org](http://www.psr-nmra.org)

Watch your mailbox in March and read about all the details of what has been briefly presented to you in this article. Then read on, dream on and get your tickets for this fantastic ride.

We are looking forward to seeing each of you in Tucson in September.

## Mark your Calendar & Plan to join us!



Sheraton Tucson Hotel & Suites  
5151 East Grant Road  
Tucson, Arizona 85712  
(800) 325-3535 (Reservations)

(520) 323-6262 (Hotel Direct)  
Web Site ~ [www.sheraton.com/tucson](http://www.sheraton.com/tucson)

When making reservations, please reference:  
"National Model Railroad Association- Pacific  
Southwest Region Convention"  
Convention room rates - \$74 plus taxes per night

~ Continental Buffet included ~



# COPPER TRAILS - SILVER RAILS

Pacific Southwest Region, NMRA® 2007 Convention

September 5 to 9, 2007

Hosted by the Arizona Division, PSR, NMRA®

Sheraton Tucson Hotel & Suites

5151 East Grant Road, Tucson, AZ 85712

Name(s)\* (1) \_\_\_\_\_ (2) \_\_\_\_\_

Address \_\_\_\_\_

City \_\_\_\_\_ State & Zip \_\_\_\_\_

Phone \_\_\_\_\_ E-Mail\*\* \_\_\_\_\_

NMRA # \_\_\_\_\_ PSR # \_\_\_\_\_ Registration Date \_\_\_\_\_

Region & Home Division \_\_\_\_\_ Primary Scale \_\_\_\_\_

\* As you want it to appear on your badge

\*\* E-Mail is the preferred communication Method

<u>Type</u>	<u>QTY</u>	<u>Each</u>	<u>Total</u>
NMRA Adult Rail (NMRA Member) After 10/15/2006	# _____	@ \$55.00	_____
NMRA Adult Rail (NMRA Member) After 4/1/2007	# _____	@ \$65.00	_____
NMRA Adult Rail (NMRA Member) After 8/1/2007	# _____	@ \$75.00	_____
Non-Rail, Spouse, or Adult Family Member (when Accompanied by an NMRA Member)	# _____	@ \$40.00	_____
Youth (10 to 17, with a paid adult)	# _____	@ \$15.00	_____
Non-NMRA Member Surcharge	# _____	@ \$10.00	_____
Guarantee to spend 3 nights at the Convention Hotel †	_____ (Please Initial)	@ -\$5.00	_____
<b>Total</b>			_____

Please make checks payable to: **PSR Convention 2007**

Send Registration form and payment to:

Paul Chandler  
4709 N. Camino Escuela  
Tucson, AZ 85718-5911

Phone: 520.299.2969  
Email: ptchandler@att.net

† If you guarantee to spend three nights in the convention hotel, you can deduct \$5.00 from your registration fee (limit one per registration form). If you have not reserved a room for at least 3 nights when you pick-up your registration packet, you will have to pay the difference between what you paid and the at-the-door registration rate. There will be special door prizes for those who participate in the three night stay at the convention hotel guarantee.

Registrar's Use Only: Cash \$ \_\_\_\_\_ Check \$ \_\_\_\_\_ # \_\_\_\_\_ Date \_\_\_\_/\_\_\_\_/\_\_\_\_

Registration # \_\_\_\_\_ Recorded: \_\_\_\_/\_\_\_\_/\_\_\_\_

**Cancellation Policy:** Full Refund, less \$5.00 per registrant, when requested in writing (or email) before August 5, 2007.

8/15/06



# 2007 PSR CONVENTION

## COPPER TRAILS ~ SILVER RAILS

### SEPTEMBER 5TH to 9TH, 2007

#### Convention Committee Staff

##### Co-Chairmen:

Rick Wheeler – (520) 818-1547.  
elisarick@wbhsi.com  
Richard Dick - (520) 790-5356  
rldtrains@yahoo.com

##### The Registrar:

Paul Chandler – (520) 299-2969  
ptchandler@att.net

##### The Railette Chairperson:

Janet Spooner – (623) 977-6760  
jspooner86@aol.com

##### Contest Chairman:

Duane Buck – (928) 284-2015  
buckgnry@msn.com

##### Clinics Chairman:

Roger von Seeburg  
309 E Beck Lane  
Phoenix, AZ 85022-3009  
(602) 942-9549  
rvonseeburg@att.net.

Interested in giving a clinic? Please let me know.

Convention web site address: [www.psr-nmra.org](http://www.psr-nmra.org)

---

**GOLDEN SPIKE** - Do you qualify for the Golden Spike Award? Have you thought about it? Here's some information from the NMRA Education Web site (<http://www.nmra.org/achievement/gold.html>) - if you think you qualify, check with your Division AP chairman. Now!

#### **Rolling Stock (Motive Power & Cars)**

Display six (6) units of rolling stock (Scratchbuilt, craftsman, or detailed commercial kits). Notice that the requirement is to "display" them. Nowhere does it say that they must earn a minimum number of points in judging - just that they must be displayed. ( In the monthly contests at your Division meetings, for example. Even having them set out on your layout, or a table in your basement counts as "display"). These models need to show a little more effort than a "shake the box" kit. For example, by itself a freight car kit straight out of the box, is not enough to qualify. However, by painting and decaling it, adding a little detailing, perhaps some weathering, etc., you'll have a qualifying model in no time!

#### **Model Railroad Setting (Structures & Scenery)**

Construct a minimum of eight (8) square feet of layout. Again, there is no requirement about how good or how elaborate your layout must be - just that you must "construct" it. On the other hand, you may have trouble convincing someone that a loop of track nailed to a piece of green painted wood constitutes a "layout" . . . How much is 8 square feet of layout? Well, a typical module is 4 feet by 2 feet, and would easily satisfy this requirement.

Construct five (5) structures (scratchbuilt, craftsman, or detailed and commercial kits). These structures may be separate, or one or more of them may be part of a single scene. The same comments apply here about the type of kits. The idea is to show that you can do more than glue a simple plastic kit together. Painting or weathering are good things to consider. Remember that "structures" aren't just buildings. Things like bridges and trestles also fall into this category.

#### **Engineering (Civil & Electrical)**

Three (3) types of trackage are required (turnout, crossing, etc.). All must be properly ballasted and installed on proper roadbed. Commercial trackage may be used. This requirement sounds a lot harder than it is. First, notice that last sentence about commercial trackage; you don't have to hand-lay anything - you can just install a store bought turnout. "Types of trackage" can be just about anything: turnouts, crossings, and grade elevation (a change in



# Flag Stops

Lindsay Smith, PSR Member Aid  
wlindsays@adelphia.net

If you send the club notices to me at my address, wlindsays@adelphia.net, I will pass them off to the Coupler and Dispatch editors. I also send the data on to Dick Greatorex for the NMRA web pages. Anyone can copy and reprint my stuff to promote the hobby, rail travel, RR history, and railroad safety.

## July

22 – 28 2007 NMRA Convention. Detroit, MI [www.nmra.org/2007/](http://www.nmra.org/2007/) The North Central Region presents the Great Lakes Express

## August

11 San Diego Division Annual Picnic - TBA  
25 Santa Susana RR Historical Soc. Swap Meet. 7:00 a.m. - 11:00 a.m. In the Santa Susana Park Pavilion. Admission \$2.00 for adults. Sellers contact Armando Cota; 805-558-2195 or mando\_118@hotmail.com

## September

5 – 9 2007 PSR Convention, Copper Trails – Silver Rails, Arizona Division. Sheraton Hotel, Tucson AZ. [www.trainnet.org/newsletters.html](http://www.trainnet.org/newsletters.html) and on the Arizona Division page on the PSR web site at [www.psr-nmra.org](http://www.psr-nmra.org)

## October

13 Pomona Valley Model Railroad Club Swap Meet

and Open House. 8:00 a.m. - Noon, Swap Meet. 9:00 a.m. – 4:00 p.m., Open house. New location VFW Parking Lot, MAIN and 1st Ave. A block west of the old location. Lindsay Smith (909) 599-0182 or wlindsays@adelphia.net. See [www.pvmrrc.org](http://www.pvmrrc.org).

28 Santa Susana RR Historical Soc. Swap Meet. 7:00 a.m. - 11:00 a.m. In the Santa Susana Park Pavilion. Admission \$2.00 for adults. Sellers contact Armando Cota; 805-558-2195 or mando\_118@hotmail.com

## November

3, 4, 6, 10, 11 Pasadena MRC Fall Show: Our 67th Year. Saturday, Nov 3, 10 1:00 p.m. - 5:00 p.m. and 7:00 p.m. - 10:00 p.m.

Sunday, Nov 4, 11 1:00 p.m. - 5:00 p.m.

Tuesday, Nov 6 7:30 p.m. - 10:00 p.m.  
5458 Alhambra Ave., Los Angeles CA. (323) 222-1718. Open House Donations: Adults \$3, Children \$1 (under 7 free when accompanied by an adult). Contact Joe Behan [jnbehan@charter.net](mailto:jnbehan@charter.net), <http://www.pvmrrc.org>.

7, 10, 11 Highland Pacific Society of Model Railroad Engineers Open House. Wed 7-10 pm, Sat & Sun noon to 5 pm. 854 E. Broadway, San Gabriel, CA 91776 - (626) 285-1031 Free, Jerry Duncan (626) 444 3317 <http://www.highlandpacificrr.com/events.html>

10 San Diego Division Fall Meet - 11:30 to 2:00pm, San Diego Model Railroad Museum, San Diego, CA. Details at [www.sandiegodivision.org](http://www.sandiegodivision.org)

Golden Spike - continued

elevation of the track) are all examples of “types of trackage”. Also, note that the three types DO NOT have to be different. For example, just having three simple turnouts will qualify. The “proper roadbed” requirement can be met by laying the track on a raised roadbed, ( such as cork ) and ballasting it. The purpose of this requirement is to show that you understand roadbed profile, drainage, etc.

All installed trackage must be properly wired so that two trains can be operated simultaneously (Double-track main, single-track main with sidings, block or command control, etc.). This requirement can also be easier than it sounds. Notice the option for a single track main with sidings. This means that as long as you can cut power to the sidings individually, you can run one train, park it on a siding while you run another, then park it and run the first again. This meets the requirement.

**Provide one additional electrical feature such as powered turnouts, signaling, turnout indication, lighted buildings, etc.** Don't read more into this than is there. A powered turnout can be something as simple as an Atlas turnout with a switch machine. Think in terms of anything that runs off the 'Accessories' terminals of a power pack and you 're half way there.

One other thing to remember: Not all of these requirements need to be met on the same layout (or piece of layout). They don't even need to be met in the same scale! If you want to build G scale rolling stock, an N scale Model Railroad setting, and an HO scale layout for trackage and wiring, go ahead.

Also, the Golden Spike, as well as the other parts of the AP have a certain amount of flexibility. For example, suppose you and your (friend / spouse / child) work together on all your projects, but do twice the required amount (12+ units of rolling stock, 16+ square feet of layout, 10+ structures, etc.). You can both be considered, as long as you can show that you have each demonstrated the required skills.



# Pacific Southwest Region ~ Directory ~

## MANAGEMENT & STAFF

<b>President</b> 12793 War Horse Street, San Diego, CA 92129 (858) 538-9863, bwsevier@sbcglobal.net	<b>Ben Sevier</b>	<b>Western Region Director</b> 1304 Santa Clara Avenue, Alameda, CA 94501 (510) 521-9778, raydBCS@aol.com	<b>Ray deBlicek</b>
<b>Vice President</b> (480) 759-5019, MRLces@cox.net	<b>Charles Stewart</b> Phoenix AZ	<b>Achievement Program Manager</b> 2722 E. Bighorn Avenue, Phoenix, AZ 85048-8984 (480) 759-5019, Snpcw@cox.net	<b>Don Stewart</b>
<b>Secretary</b> 5722 W. Cochise Drive, Glendale, AZ 85302-1318 (623) 435-8534, dlirick@qwest.net	<b>David Irick</b>	<b>PSR Dispatch Editor &amp; Ballots</b> 12793 War Horse Street, San Diego, CA 92129 (858) 538-9863, psrdispatch@sbcglobal.net	<b>Ben Sevier</b>
<b>Treasurer &amp; Nominations</b> 10837 N. 34th Place, Phoenix, AZ 85028-3310 (602) 953-1681, TCDRaider@aol.com	<b>Tom Draper, HLM</b>	<b>Webmaster</b> 12025 North 28th Street, Phoenix, AZ 85028-1113 (602) 971-6263, dickg@getnet.net4	<b>Dick Greatorex</b>
<b>Member Services</b> 10837 N. 34th Place, Phoenix, AZ 85028-3310 (602) 953-1681, Fax: (602) 953-0751, zdraper@aol.com	<b>Debbie Draper</b>	<b>Publication Advertising</b>	<b>(vacant)</b>
<b>Member Aid</b> 1446 Paseo Garcia, San Dimas, CA 91773-3915 (909) 599-0182, wlindsays@adelphia.net	<b>Lindsay Smith</b>	<b>Historian</b> 5210 Carmelynn St., Torrance, CA 90503 (310) 371-1971, mdlrerrbill@verizon.net	<b>Bill Mergard</b>
<b>Contest</b> 10 Broken Lance Way, Sedona, AZ 86351-8929 (928) 284-2015, buckgnry@msn.com	<b>Duane E. Buck</b>	<b>By-Laws &amp; Operations Manual</b>	<b>(vacant)</b>
<b>Education</b>	<b>(vacant)</b>	<b>Layout Coordination</b> 22372 Canaveras, Mission Viejo, CA 92691-1608 (949) 770-5158, psrpm239@cox.net	<b>Robert Chaparro</b>
<b>Railettes</b> 16013 N. 99th Drive, Sun City, AZ 85351-1246 (623) 977-6760, jspooner86@aol.com	<b>Janet Spooner</b>	<b>"Chief Hobo-in-Charge"</b> 5210 Carmelynn St., Torrance, CA 90503 (310) 371-1971, mdlrerrbill@verizon.net	<b>Bill Mergard</b>

## DIRECTORS



**Arizona**  
**Duane Buck**  
10 Broken Lance Way,  
Sedona, AZ 86351-8929  
(928) 284-2015  
buckgnry@msn.com



**Los Angeles**  
**PAUL CUTTER**  
3042 Earlmart Drive  
Los Angeles, CA 90064-4632  
(310) 837-5269  
patecu@sbcglobal.net



**Cajon**  
**Carl Heimberger**  
2125 E. Lincoln Avenue  
Anaheim, CA 92806-4105  
(714) 776-6394  
cheimberger@anaheim.net



**San Diego**  
**Don Fowler**  
10768 Sayers Court  
Santee, CA 92071  
(619) 258-3529  
donald.fowler@sdsheriff.org

## PSR Dispatch

Published quarterly by the Pacific Southwest Region of the National Model Railroad Association®.

Material for publication must be received by the deadlines shown in the Submission Schedule, below.

Opinions expressed herein are those of the authors or the editor and are not necessarily those of the PSR. Permission to quote is granted by giving credit to the PSR, the *PSR Dispatch* and the individual authors.

Email articles to: [psrdispatch@sbcglobal.net](mailto:psrdispatch@sbcglobal.net), or surface mail to 12793 War Horse Street, San Diego, CA 92129-2219. Photographs (prints only) should be surface mailed. Digital images may be emailed or surface mailed. Mailed items may be on a 3.5 inch PC disk, standard CD, handwritten, typed (new or good clean ribbon) or printed on any type of printer. All photographs, disks and CD's will be returned after publication if requested. Questions or Comments? Email the editor: [psrdispatch@sbcglobal.net](mailto:psrdispatch@sbcglobal.net)

\* \* \* \* \*

Printed by:  
Electronic Printing Solutions,  
4898 Ronson Court, Suite B  
San Diego, CA 92111

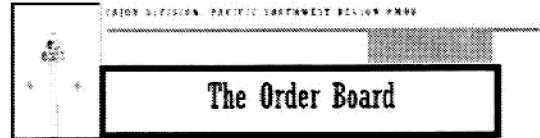
The "PSR Dispatch" is composed using Adobe "Indesign CS".  
Headline Fonts: Bell Gothic  
Text Fonts: Adobe Caslon

## NEWSLETTERS



### Spur Line

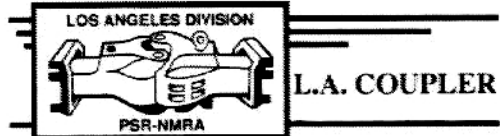
Editor — Rick Watson  
6231 S. Rita Lane, Tempe, AZ 85283  
(602) 319-0265, [spurlinepsr@yahoo.com](mailto:spurlinepsr@yahoo.com)



Editor — William R. "Bill" Jacobs  
4813 Plata Del Sol Drive, Las Vegas, NV 89121  
(702) 456-4476, [billj455@yahoo.com](mailto:billj455@yahoo.com)



Editor — Gary Robinson  
2319 Conway Drive, Escondido, CA 92026-1212  
(760) 839-5877, [grobbedobbie@yahoo.com](mailto:grobbedobbie@yahoo.com)



Editor — Bruce Hanrahan  
4320 Lempe Avenue, Studio City, CA 91604  
(818) 985-2898, [fishsb1231@sbcglobal.net](mailto:fishsb1231@sbcglobal.net)

Back issues for *PSR DISPATCH* and all four of the Division newsletters are available in PDF format from TrainNet.org at [www.trainnet.org](http://www.trainnet.org).

## ON THE WEB

Home Page  
[www.psr-nmra.org](http://www.psr-nmra.org)

Dick Greatorex, Webmaster  
[dickg@getnet.net](mailto:dickg@getnet.net)

On the PSR Homepage

Arizona Division  
[www.getnet.net/~dickg/nmra/azdiv/azdiv.html](http://www.getnet.net/~dickg/nmra/azdiv/azdiv.html)  
Cajon Division  
[www.getnet.net/~dickg/nmra/cajon/cajon.html](http://www.getnet.net/~dickg/nmra/cajon/cajon.html)  
<http://www.cajondiv.org/>  
Los Angeles Division  
[www.getnet.net/~dickg/nmra/ladiv/ladiv.html](http://www.getnet.net/~dickg/nmra/ladiv/ladiv.html)  
San Diego Division  
[www.getnet.net/~dickg/nmra/sdiego/sdiego.html](http://www.getnet.net/~dickg/nmra/sdiego/sdiego.html)  
[www.sandiegodivision.org](http://www.sandiegodivision.org)

1 - Current issues of the *PSR DISPATCH* and all four of the Division newsletters (in PDF format).  
2 - PSR 2007 Convention "Copper Trails ~ Silver Rails" to be held on September 5 thru 9, 2007 in Tucson, AZ

To send email to anyone in this directory, go to the PSR Web Site [www.psr-nmra.org](http://www.psr-nmra.org) and click on their email address in the appropriate section.

### Submission Schedule and Planned Topics

Issue	Deadline
25/3	21 July 2007
25/4	20 October 2007
26/1	19 January 2008
26/2	19 April 2008
26/3	19 July 2008
26/4	23 October 2008
27/1	18 January 2009

Topics
Director Elecction Results PSR 2007 Convention info
PSR 2007 Convention report, PSR/NMRA 2008 Convention Info
PSR/NMRA 2008 Anaheim Convention Info
PSR/NMRA 2008 Convention info, Officer Elections
Officer Elecction Results, PSR 2008 Convention info
PSR/NMRA 2008 Convention Report
PSR/NMRA 2009 Convention info

## NMRA MEMBERSHIP APPLICATION - PSR

Please accept my application for membership renewal or new membership in the NATIONAL MODEL RAILROAD ASSOCIATION, which includes the PACIFIC SOUTHWEST REGION and my local PSR Division.

*New*     *Renewal*                       *NMRA #*                       *PSR #*

Name				
Address				
City	State		Zip	
Phone	Birth Date		Scale	
Email	Occupation			

<i>NMRA Membership Type - circle your choice of options</i>	<i>1 Year</i>	<i>2 Years</i>	<i>Total</i>
<b>Member</b> - All rights and benefits - does not include NMRA Scale Rails	\$36.00	\$72.00	
<b>NMRA Scale Rails subscription</b> - Must be an NMRA member to subscribe	\$12.00	\$24.00	
<b>PSR Dispatch subscription</b> - Must be NMRA member to subscribe	\$8.00	\$16.00	
<b>Family</b> - Spouse or minor child of above member in good standing. No NMRA Scale Rails or voting rights. Provide family members name and date of birth here: Name: _____ DOB: _____	\$7.00	\$14.00	
<b>Student</b> - any person 18 yrs and under or student between the ages of 19 - 25 yrs possessing valid student ID. All rights and benefits and NMRA Scale Rails	\$24.00	\$48.00	
<b>Sustaining</b> - Mandatory for group memberships (Clubs, Associations, Businesses). All rights and benefits and NMRA Scale Rails	\$96.00	\$192.00	
<b>TOTAL DUES AND SUBSCRIPTIONS PAYMENT ENCLOSED (Make checks payable to NMRA)</b>			

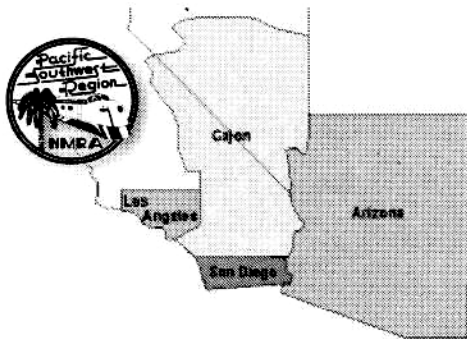
<b>Credit Card</b>	MasterCard	VISA	AMEX	Diner's Club	Discover
<b>Card #</b>	<input style="width: 100%;" type="text"/>	<input style="width: 100%;" type="text"/>	CV#	<b>Issued To (print)</b>	
<b>Expiration</b>	<input style="width: 100%;" type="text"/>	<b>Signature</b>			

Month                      Year

**MAIL TO:** Debbie Draper, Membership, 10837 N. 34th Place, Phoenix, AZ 85028-3310

### **PSR DISPATCH**

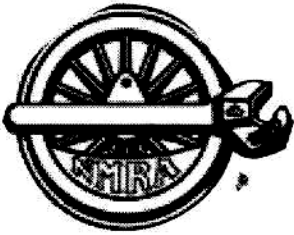
Official Publication of the  
Pacific Southwest Region  
National Model Railroad Association®



PRSR STD  
U.S. POSTAGE  
PAID  
SAN DIEGO, CA  
PERMIT NO.751

POSTMASTER: Please send address changes to:  
10837 N. 34th Place, Phoenix, AZ 85028-3310





# OFFICIAL BALLOT PSR DIRECTORS



See the Candidates Profiles on page 7 thru 9 of the 2nd Quarter, 2007 PSR Dispatch.

Vote ONLY for your Division. Ballots incorrectly marked will not be counted.

All ballots must be postmarked no later than July 8th, 2007 and received no later than July 18th, 2007



### Director - Arizona Division - Check One

Duane Buck.....

Rick Watson .....



### Director - Cajon Division - Check One

Carl Heimberger.....



### Director - Los Angeles Division - Check One

Paul Cutter.....



### Director - San Diego Division - Check One

Don Fowler.....

PSR BALLOT