



PSR Dispatch

PACIFIC SOUTHWEST REGION

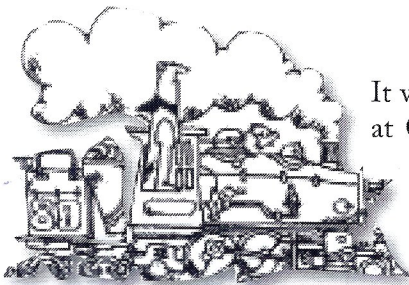
National Model Railroad Association®

VOLUME 32, ISSUE 1 — 2ND QUARTER, 2014

© 2014 Pacific Southwest Region, NMRA®

From the Hot Seat!

Don Fowler, PSR President
president@psrnmra.org



It was great to see everyone at Cajon Division's Spring Meet in Temecula, CA on March 28-29. Our hosts did a great job of providing an excellent event that was very

well attended and facilitated. Our thanks to all that worked so hard to make it a success.

During this event, we conducted our Mid-Year PSR Board Meeting on March 29th. Some of the meeting topic highlights included;

- 2013 PSR Convention After-Action Report (Cajon Division)
- 2014 PSR Convention Update (San Diego Division)
- 2015 PSR Convention Update (Arizona Division)
- PSR By-Laws & Manual of Operations Revision (All)
- Joint PCR/PSR Convention Proposal & Discussion (All)

Some of the Board members and I will be traveling to this year's PCR Convention in April to promote this year's PSR Convention and to discuss a proposal for a joint convention in the near future. Stay tuned for further details.

San Diego Division's Spring Meet will be held on May 10th at the Short Track RR Club in Vista,

CA. We'll have some great clinics, lunch, show & tell, contest judging and a tour of the new progress on the Club's incredible layout.

Los Angeles Division will be hosting Spring Rail 2014 on May 17th at the First Christian Church in Alhambra, CA. Activities will include a swap meet, clinics, lunch and a hobo auction. This should be a fun event.

Don't forget to register for our upcoming PSR Convention being held in beautiful San Diego on September 3-7. This year's event promises to be one of our best with a wide variety of activities to choose from, including some new things that you've never seen before. You won't want to miss it!

Here are the highlights from National's Mid-Year Board Meeting (Las Vegas, NV - 02/14-16/14);

- New Europe Region Approved – The Board unanimously approved a contingency motion to accept a new Europe Region into the NMRA.
- Video Recording/Streaming Policy – The Board agreed to adopt the temporary policy as permanent.

• New Marketing Director – Marketing Director Page Martin was promoted to Vice President of Marketing and introduced the new Marketing Director, John Parrish.

• Finance – CFO Frank Koch reported that the year ended with a surplus of \$240,000.

• CA State Railroad Museum Display - \$600,000 has been raised to date.

• National Convention –

In This Issue

Arizona Division	2
Cajon Division.....	2
Los Angeles Division.....	3
San Diego Division	3
Fireman's Seat.....	4
Railettes	4
Achievement Program.....	6
New Members.....	6
"No Further West"	7
"Uniting Railroad Modelers" Convention.....	8
2014 Convention Registration Form.....	9
NMRA Info-Net News	12
Flag Stops.....	13
PSR Directory	14

Division Director

Arizona

Dave Irick

Director@AzDiv-NMRA.org



Greeting from the state of Arizona. Our Spring meet was held in Sun City, AZ, at the Fairway Recreation Center. We were again pleased with a large crowd, interesting clinics, a great swap meet, fantastic models in the contest room, lots of giggling and talking from the ladies area and the large layout of the Sun City modelers to enjoy. It was a great day and everybody had a great deal of fun.

At our March meet we hosted the first "creativity contest" and were pleased to have 15 entries. The contest was well received by the membership, and will be offered again next year. We chose a cheap \$10.00 kit, which we offered to members for \$5.00. Rules are simple, at least 2 walls of the kit must be used in the display but can be modified in any way, more than one kit may be used and the maximum base size is 12 inches by 18 inches with nothing extending outside these dimensions. The height is limited by the distance from the table top to the ceiling. Creativity rules and judging is by popular vote. We have all entries posted in the "Spur Line" on the Arizona Division website, visit the site and enjoy the creativity and talent of our members.

The 2015 Pacific Southwest Region convention will be hosted by the Arizona Division. The convention will be held at the Millennium Resort and Villa in Scottsdale, AZ on Sept 16 thru Sept 20 in 2015. The Scottsdale Model Railroad Club located at the fabulous McCormick - Stillman Railroad Park has volunteered to take the lead and host the convention with the help of volunteers from around the State. The Millennium hotel is located only 6 tens of a mile north of the McCormick - Stillman Park. The Wednesday evening welcoming reception will be hosted at the McCormick - Stillman Park which will give all of you time to visit the many layouts and railroad features in the park. Be ready to sign up for the 2015 convention at the Region Convention in San Diego in September 2014.

Cajon

Per Harwe

cajondivision@verizon.net



We had a very good Spring Meet in Temecula this year. Lots of attendees, very good clinics, and a successful Chinese Auction made for a meeting that everybody who attended will remember for a long time. Maybe the free T-shirt for all Cajon members helps keeping the meeting in fresh memory. The free T-shirt give-away is something we will continue at all our division meetings until every member has a shirt. Our hope is that it will strengthen the feeling of belonging to our division and help draw new attendees to our meetings. By the time you read this we will already have had our Las Vegas meeting so if you want a shirt and didn't get one, come to our next meeting and there will be one waiting for you.

One of the clinic tracks in Temecula was to build a Time Saver module. The intention is to bring this module to our future meetings and have a friendly competition where time really counts. Whoever can do the switching in the shortest time will win a fabulous prize. What it will be, I don't know yet, but it will be good, I'm sure of that.

Our election of Superintendents is officially over and we have three Supers duly elected. Our Board is filled and we can start working on the By-Laws and the Manual Of Operations. The first needs to be updated to better line up with the By-Laws of the other Divisions and with that of the Region. We do not have a Manual Of Operations so that is high on our list to do.

We are still struggling with finding a location for our fourth annual meeting. So far we have Temecula, Las Vegas, and Barstow all lined up, but we would really like to find a good location for a fourth meeting. If anyone knows of a suitable place to meet, please let me know and who knows, that may be the location for our meet late this year. Speaking of Barstow, we are not really sure when and where that meeting will be this year. There is a new management at the hotel we have used for years and we may have to find a new location due to increased costs. Keep an eye open in a couple of months for more information.

As I was going through old Cajon Division documents I came about a binder

Cajon - Continued on page 5

As always I like to stress, support your local hobby shops,

Activity Reports



Los Angeles

Bob DeMoss
director@ladiv-nmra.org



San Diego

Pete Steinmetz
director@sandiegodivision.org

The Los Angeles Division Officer's and other modeler volunteers have been preparing for our annual SpringRail, which came off with a great success on Saturday, May 17th. Attendance was good, in spite of several other Model Railroad events on our day.

We started off the morning, with a great swap meet, with the Los Angeles Model Railroad Society with several tables loaded with bargains, Mike DeGetto of Alpine Scale Models and four other dealers also were offering good prices. We had six clinics in the morning and four clinics in the afternoon. We also had four time saver layouts that several modelers tried their railroad operation experience on. The model contest had several real nice entries and following a well-received box lunch, we held our HOBO auction.

Our costs were a little bit higher this year, as compared to last year, so we may have to raise the price next year, still a bargain. We have a new idea that we are considering already for next year, nothing like adding a little variety.

Now we will prepare for other events for our members and our event in October.

On another note, several other railroad modelers built a model of the Los Angeles Union Passenger Terminal for the downtown Los Angeles public Library. The Library and the Getty Institute has an exhibit at the Library on the development and future development of the Station and public transportation for Los Angeles. See additional information in this issue.

Notice of Meeting

The Annual PSR Board of Directors meeting will be held September 3rd, 2014, 1:00pm to 5:00pm in Convene 6, Courtyard Marriott, Hotel Circle, San Diego, CA

Any items to be discussed should be submitted to the PSR Secretary or one of the Division Directors prior to the meeting.

All interested members are encouraged to attend.

First quarter of 2014 has been a busy one in the San Diego Division. We had our Winter Meet and Swap Meet in February. It was a successful outing with a good swap meet, good clinics and a large crowd. The Winter Meet is growing each year. Many of our members attended the Cajon Division meet in Temecula. Cajon Division always puts on a good meet with plenty of clinics. Our PSR board meeting was very productive. Some of our members are planning on attending the PCR Convention in San Luis Obispo from April 30 - May 4. There should be quite a few PSR members attending.

We are working hard on our PSR Convention, September 4 - 7, 2014. I am the clinic chair and am lining up some great clinics. There are many clinics devoted to modeling and building something. We will offer many make and take and hands on clinics. There is an outdoor area where we will hold "Dirty, Smelly, and Messy" clinics. Look at this link which will be updated regularly. <http://www.psrconvention.org/SanDiego2014/2014clinics.html>

More about our convention in this issue.

One of the problems that I plan to address in the San Diego Division is the ability to attract new members, especially young new members. I also want to address the retention of members. We will be looking at members that haven't renewed. They will be contacted in order to find out why they didn't renew and what would convince them to renew their membership.

For those of you that sell on E Bay, you can donate all or a portion of the sale price to the NMRA. E Bay and Pay Pal don't charge any fees so 100% of your donation goes to the NMRA. It is a pretty painless way to support the NMRA. If you know other people that sell on E Bay, encourage them to donate.

Until the next issue, keep the wheels rollin.



Fireman's Seat

Carl Heimberger, PSR Vice President
vp@psrnmra.org

It is hard to believe it has almost been 4 years since I became the Vice President of the PSR, time really flies. Over these past years I have met a lot of interesting modelers and attended some really outstanding events, all of which were put on by VOLUNTEERS. As you should know the back bone of NMRA is its volunteer base. Without these volunteers putting forth a little extra effort we would not have great events to attend such as local Division Meets and the Annual PSR Conventions. Contrary to popular belief there is no "GOOD OLD BOYS CLUB" in NMRA, it is just a bunch of guys and gals who really love this hobby and are willing to go the extra mile to keep the organization active and alive. So the next time you are asked to help with an event or give a clinic, do the right thing for the organization and say YES.

Speaking of upcoming great events, September brings the 2014 Pacific Southwest Regional Convention which will be held in San Diego this year. If you have not yet registered now is the time to do so as it takes countless hours of planning for the local host division to put on an event of this scope. So it is only fair to them to let them know just how many members will be attending so they can plan the convention adequately. Also if you have been asked to help with organizing the convention or to give a clinic by one of the members of the convention committee please say YES. In fact even if you have not been approached why not take the initiative and volunteer some of your time and/or give clinic. From what I have been told the format of this year's PSR Convention has changed, and I believe most of you will find these changes refreshing. San Diego has always put on great conventions, with great clinics, outstanding layouts, and prototype tours so I hope to see all of you in San Diego in September.

Remember you only get out of NMRA what you put into it. And at the Regional and Division levels we are a 100% volunteer organization. So if you are unhappy with how the NMRA is being run or you are not happy with the programs you, have the power to change them and all you need to do is give a little of your time to make that change.

Railettes

Kim Fowler, Railette Chair
railette@psrnmra.org

Hello Railettes!

I have what I hope will be an appealing and fun program set up for this year's convention. We will have a variety of crafts, a trip to a local casino/outlet shopping center including our annual luncheon, and a Ladies' Vendor Show with vendors representing several diverse products. There will also be offered a Surfliner trip to San Juan Capistrano, for antiquing, lunch and sightseeing.

My goal is to have the Railettes go home thinking, "Gee, I wish I could have done it all!!"

See you in September in San Diego!



"Uniting Railroad Modelers"
2014 PSR Convention
September 3 - 7, 2014
San Diego, CA

If you've not yet registered, there's still time to come and enjoy Clinics (30+), Layout Tours (25+), Ops Sessions (7), Live and Hobo Auctions, Prototype Tours, Railette Events, NMRA Contest Room, Modular Layouts on Display, Public Swapmeet, and many, many more things to keep you entertained, educated and generally very busy. We've added clinics on the first day (Wednesday) as well as some on Sunday.

Registration, Company Store, Listing of events and clinics, and Schedules are online at the website.

<http://www.psrconvention.org/SanDiego2014>

Reports - Continued

President

The Board approved Kansas City for the location of the 2018 Convention.

- Website – IT Director Ben Sevier reported that the completely revamped website is nearing completion and hopefully go live this summer.
- L Gauge – The Board did not approve the proposed standards for L Gauge (Lego) due to sole proprietary control.
- Self-Certification Program – The Board ratified this program for standards & compliance as proposed by S & C Department Manager, Di Voss.
- Meetings & Train Show Personnel Changes
 - o Department Manager – Bob Amsler
 - o Convention Manager – Ray deBlieck
 - o Asst. Convention Manager – Ed Slintak
 - o NTS Manager – Mark Shafer
 - o Floor Manager – Tom Draper
 - o Treasurer – Frank Koch
 - o Admin Contact – Jenny Hendricks
- Notice of 2015 Elections – The following Officer and Board of Director positions are open for election in 2015:
 - o President
 - o Vice President, Administration
 - o Vice President, Special Projects
 - o Eastern District Director
 - o Pacific District Director
 - o At-Large North America Director

All submissions of candidate's names for consideration must be submitted no later than June 15, 2014. Requirements for submission are contained in the Executive Handbook.

I hope to see you soon at one of our upcoming events!

Arizona

they are the life blood of our hobby. The local hobby shop is where most modelers get their first introduction and help in the hobby. When we lose our local contacts, we will lose our hobby and yes we recently lost one, an old friend, "Roy's Train World" closed their doors. Tim was a great supporter of our hobby and our Division, when you see him, thank him for all that he has done for us over the years.

I recently was driving through San Diego and stopped at "Reed's" to hunt for that special item and see what I could find that I could not live without. I was impressed by the clerk helping a gentleman with a product, explaining how to use it and what alternatives were available. I later thanked the clerk for helping the gentleman. If we want to increase our membership and the general public's interest in our hobby we need to appreciate what that man or lady behind the counter is doing for us. The next time that you are in a train store look at the faces of the customers and especially the kids looking at the products on the shelves and ask yourself, what would it be like if everything was only available on the internet. You might even ask them to join us in the NMRA for \$9.95.

Mark your calendar and attend an Arizona meet. Watch our web page for time and locations.

Cajon

full of The Order Board from issue #2 up to today. We have started to scan these old copies and as soon as one is done, it will posted on our website. While I was going through the earlier issues I found that on Midsummer's Day (June 24th), 1973 Division 8 of the PCR was formed. This division was later named the Cajon Division. Sorry we missed our 40th birthday last year, but we can still celebrate our 41st this year!

PSR Dispatch Subscriptions

Electronic Delivery

Send an e-mail to PSROnline-subscribe@yahoogroups.com with your name, e-mail address, NMRA number and division. Use "Electronic Delivery Subscription" as the subject of your e-mail. Or, if you are reporting a change of e-mail address, use "E-Mail Address Change" as the subject of your e-mail. You will be notified when the new issue is available as a PDF download on the PSR website.

Regular Mail Subscription

Subscribe for one or two years when you join the NMRA or renew your membership. A one-year subscription is \$12.00; a two-year subscription is \$24.00. New and renewal membership forms are available in the Dispatch, from the membership chairman for your Division or from the NMRA website at <http://www.nmra.org/>. The website offers both online and mail-in options.

For more information about electronic delivery and regular mail subscriptions, visit the Pacific Southwest Region website at <http://www.psrnmra.org/>.

PSR Online!

Join the PSR Online Yahoo group to get up to date news, announcements, and real time discussions of interest to members of the PSR. Go to <http://groups.yahoo.com/group/psronline/> or send an email to PSROnline-subscribe@yahoogroups.com and follow the instructions to become a member.

Achievement Program



Don Stewart, AP Program Manager
ap@psrnmra.org

Three MMRs have been crowned since the PSR Convention last September. Last year Don Fowler and Dick Roberts from San Diego earned MMR Certificates. Don is MMR #518 and Dick is MMR #522. In addition David Irick in the Arizona Division earned his MMR in April 2014. He is MMR #538. Please congratulate these people when you see them as they have earned the highest honor the NMRA presents to a Model Railroader.

Seven people earned 12 AP Certificates since the PSR Convention in 2013. The names were announced in the Scale Rails. They are:

Don Fowler San Diego Div. Master Builder –
Motive Power PSR Certificate #343
Don Fowler San Diego Div. Master Model
Railroader #518 PSR Certificate #344
Dick Roberts San Diego Div. Master Builder –
Motive Power PSR Certificate #345
Dick Roberts San Diego Div. Master Model
Railroader #522 PSR Certificate #346
Frank Baker Arizona Div. Master Builder –
Structures PSR Certificate #347
Richard Petrina Arizona Div. Master Builder –
Scenery PSR Certificate #348
Gary Robinson San Diego Div. Association Official
PSR Certificate #349
David Irick Arizona Div. Model Railroad
Engineer - Civil PSR Certificate #350
David Irick Arizona Div. Model Railroad
Engineer - Elect PSR Certificate #351
David Irick Arizona Div. Master Builder –
Scenery PSR Certificate #352
David Irick Arizona Div. Master Model
Railroader #538 PSR Certificate #353
Morrie Fleishman Cajon Div. Association
Volunteer PSR Certificate #354

Bruce Deck earned a Golden Spike Award. He is in the San Diego Division. Please keep building models, scenery, track and plugging in electronics; also, volunteering and running for office, writing and follow up by sending in SoQs.

New PSR Members January - June 2014

Please welcome these new members to the PSR. If you see them at events, introduce yourself to them, and make them feel at home.

Carmine	Allocca	AZ	Arizona
Thomas	Beecher	AZ	Arizona
Peter	Blakeslee		Arizona
Dennis	Bueschel	AZ	Arizona
Thomas	Di Dio	AZ	Arizona
John	Diesing	AZ	Arizona
Ralph	Edwards	AZ	Arizona
Robert	Edwards	AZ	Arizona
Robert	Gregory	AZ	Arizona
Deirdre	Hammond		Arizona
Peter	Hogan		Arizona
Kevin	Paige	AZ	Arizona
Stanley	Pownall	AZ	Arizona
Edward	Prichard	AZ	Arizona
Jeff	Scott	AZ	Arizona
David	Simpson	AZ	Arizona
Tom	Stash	AZ	Arizona
Marshall	Wales	AZ	Arizona
Chris	Weiser	AZ	Arizona
Jennifer	Westholm	AZ	Arizona
Lenny	Wyatt	AZ	Arizona
Gwenn	Abrams	CA	Cajon
Fred	Bergloff	CA	Cajon
Judy	Bergloff	CA	Cajon
Zachary	Dellinger	NV	Cajon
Charles	Franks	NV	Cajon
Mike	Gatherer	CA	Cajon
Mark	Harrison		Cajon
Nancy	Hill	CA	Cajon
Samuel	Horsley	CA	Cajon
Larry	Kennedy	NV	Cajon
Wanda	McCargar	CA	Cajon
Robert	Mearns	NV	Cajon
Bill	Messick	CA	Cajon
Bruce	Moessen	NV	Cajon
Wally	Narajowski		Cajon
Gordon	Remala	CA	Cajon

NO FURTHER WEST: THE STORY OF THE LOS ANGELES UNION STATION

The Library Foundation of Los Angeles, in partnership with the Getty Research Institute, is commemorating the 75th Anniversary of the Los Angeles Union Passenger Terminal, with an exhibit in the historic downtown Los Angeles Central Library, from May 4th through August 10th, 2014.

“No Further West” is the first exhibition to examine this important architectural and civic landmark in historical context, beginning with the 1909 onset of the “battle for Union Station” and concluding with present-day efforts to develop a master plan for transportation in Los Angeles. They have on exhibit some of the original drawings and photographs of the development of the station and the proposed future of transportation for the City of Los Angeles and Southern California.

As part of this exhibit, the library asked for a model of the station. I suggested the Walthers Kit, but explained that it only included a very small part of the station, in that they omitted the Harvey House, the Courtyards, the back building under the upper drive and Railway express baggage building. I and several other modelers undertook this project.

Mary Barstow built the Walthers portion, consisting

of the Ticket Office, Waiting room and the one arcade. She also built the Walthers Passenger loading platforms.

Robert DeMoss prepared plans to build the other portions. Then Robert DeMoss, Mark Hummel and Andy Jackson undertook to build the missing portions. Many people contributed to the project, Mike DeGetto of Alpine Scale Models had Bill Kift laser cut the Harvey House, the South Arcade, the rear building under the drive, and the Railway express Baggage building. This was a great help. Steve Kin did some of the landscaping in the South Court Yard and furnish the materials for the Hedges. Tom Cataldo laser cut the double doors in the rear building, Kevin Honda of Arnies Trains contributed much of the tile roof and Walthers supplied the rest. Lloyd Kluesner, of Lloyds Layouts contributed the track. Jeff Smith of Railmaster hobbies also contributed.

On weekends many of the modular RR Clubs are setting up and operating their trains in the exhibit hall. So if you can, visit the Downtown Los Angeles Library and see the exhibit.

Suggest that you use public transportation, the Blue Line takes you within a couple of blocks of the Library.



Uniting Railroad Modelers

Model Railroad Convention



PACIFIC SOUTHWEST REGION
NMRA®

September 3rd – 7th, 2014

Courtyard Marriott
Hotel Circle South
San Diego, CA 92108

Clinics ~ Auction ~ Layout Tours
Prototype Tours and Activities
Model Railroad Operations
Model & Photography Contest
Family Activities

CONVENTION SWAP MEET

Public Invited

Saturday, September 6th, 2014
9:00am to 2:00pm

**BUY
SELL
TRADE**

Parking Lot
Courtyard Marriott
San Diego, CA 92108

**ALL
SCALES**

Seller Tables Available to Registrants & General Public
Convention Registrants - Free Admission
All Others - Admission at Door - Children 12 and Under Free

Visit The "Uniting Railroad Modelers" Website For Details, Registration And Up To Date Information

<http://www.psrconvention.org/SanDiego2014>

Convention & Swap Meet hosted by the San Diego Division, PSR, NMRA – www.sandiegodivision.org



Uniting Railroad Modelers 2014 Pacific Southwest Region Convention September 3-7, 2014

Reg # _____

Presented by the San Diego Division, PSR, NMRA®
Marriott Courtyard, Hotel Circle, San Diego, California

NMRA #: _____ Registration Date: _____

Name(s)*(1) _____ (2) _____

*As you want it to appear on your badge

Address _____ Phone (pri) _____

City _____ State & ZIP _____ Phone (alt) _____

E-Mail** _____ **E-Mail is the preferred communication method

Region & Home Division _____ Primary Scale _____

My trains run on: DC DCC Other _____

REGISTRATION TYPE

	QTY	EACH	TOTAL
Adult Rail (NMRA Member) Reg only (04/01/2014-07/31/2014)	_____	@ \$75.00	_____
Adult Rail (NMRA Member) Reg only (after 08/01/2014)	_____	@ \$90.00	_____
Adult Family Member, with NMRA member, Reg only (04/01/2014-07/31/2014)	_____	@ \$65.00	_____
Adult Family Member, with NMRA member, Reg only (after 08/01/2014)	_____	@ \$75.00	_____
Youth (10-17, with paid adult), Reg Only	_____	@ \$15.00	_____
Single Day – Indicate Day [] Thur [] Fri [] Sat	_____	@ \$30.00	_____
Banquet Only	_____	@ \$35.00	_____
Non-NMRA member surcharge (applied to Rail Pass if eligible)	_____	@ \$10.00	_____
Extra Fare from reverse (when posted)			_____
	Total	\$	_____

Would you be interested in helping out while at the convention? Yes No, thanks

Would you be willing to give a clinic? Topic: _____ Yes No, thanks

Operating session interest? Yes No, thanks

Make checks payable to: San Diego Division Send registration form and payment to:

Gary Robinson, PSR 2014 Registrar, 2319 Conway Drive, Escondido, CA 92026

Registrar's contact information: Email: grobbedobbie@yahoo.com Phone (760) 839-5877

Convention Hotel: Marriott Courtyard, 595 Hotel Cir S, San Diego, CA 92108

Reservations: Book your group rate: NMRA Pacific SW Conference or 619-291-5720. Room Rate \$99.00 per night, plus taxes. Parking is free to attendees.

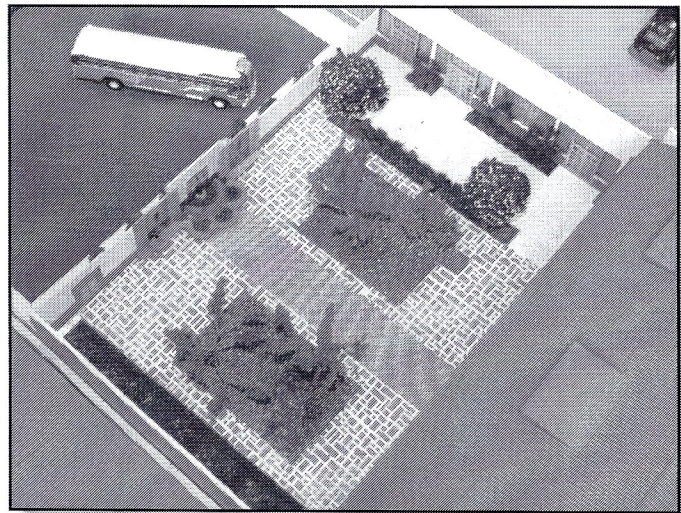
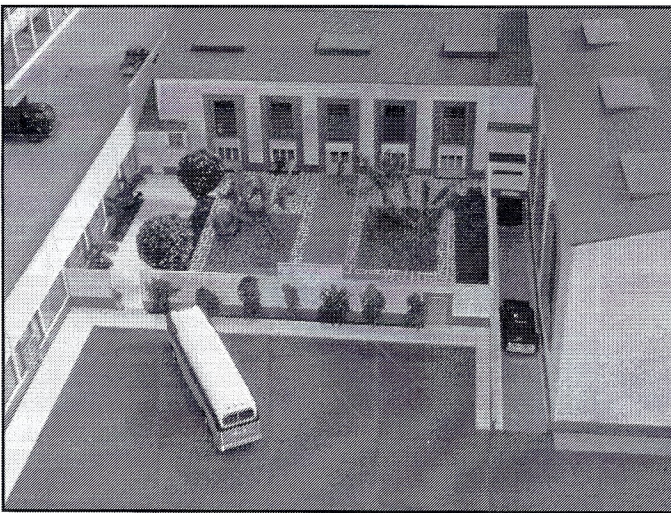
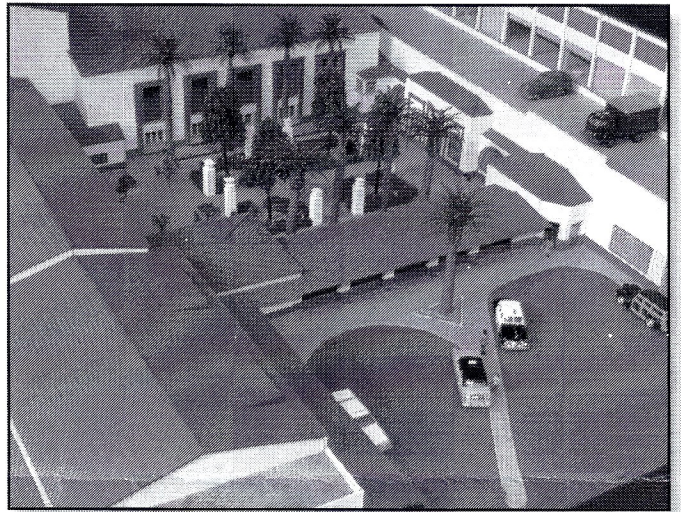
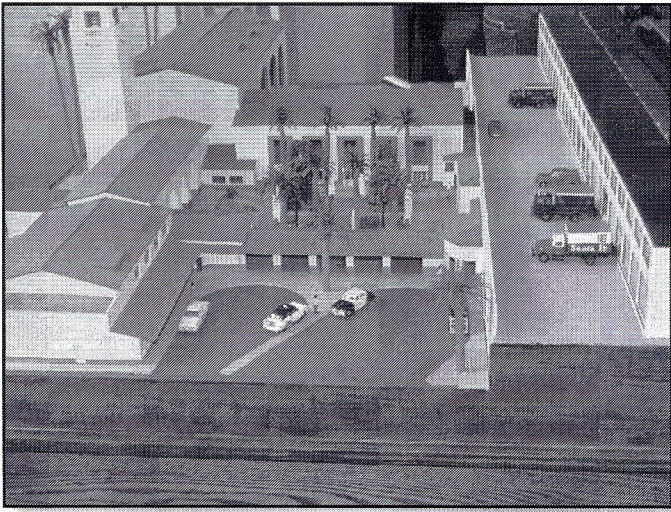
“Uniting Railroad Modelers”

Extra Fare Selection

Name: _____

	Quantity	Price Each	Total Price
Merchandise			
HO Scale Convention Car, Accurail DD boxcar			
RTR, with Convention Decals		\$24.00	
KIt, with Convention Decals		\$15.00	
N Scale Convention Car, Micro-Trains boxcar			
RTR, with Convention Decals		\$ 20.00	
Convention Pin		\$7.00	
Convention Patch		\$5.00	
Convention Shirt – Stone (Tan) polo, w/pocket, 2” logo over pocket			
Circle size(s) S M L XL XXL		\$ 26.00	
Prototype Tours – Includes Transportation - see web site for details			
Pacific Southwest Railway Museum, Campo, CA			
Thursday, Sept 4 - 8:30am - 5:00 pm		\$55.00	
Cab Ride (limited availability - see web site)		\$15.00	
SPRINTER Light Rail - North County Transit District			
Friday, Sept 5 - 8:30am - 12:00pm		\$45.00	
The National City Depot and San Diego Trolley Museum			
Friday, Sept 5 - 1:00pm - 4:30pm		\$35.00	
San Juan Capistrano Amtrak Surfliner Trip			
Saturday, Sept 6 - 9:00am - 5:00pm		\$ 5.00	
Attendee responsible for own ticket - \$5 cost is for shuttle to/from Amtrak Station			
Non-Rail / Railettes			
Viejas Casino and Outlet Mall - Friday, Sept 5 - Full Day - Bus		\$30.00	
Railette Event Ticket - \$5 for all events per registered attendee		\$5.00	
Attendance at the Railette events requires the purchase of a \$5 Railette Ticket - one ticket covers all Railette Events except Viejas Casino trip		\$5.00	
Swapmeet Table - Registered Attendee - \$10 per table		\$10.00	
Hand's-On Clinics			
Build a Building with Jimmy Simmons - HO Scale		\$20.00	
Build a Building with Jimmy Simmons - S Scale		\$30.00	
General Fee Required for Hand's On Clinics (all except Simmons) - \$5 each		\$5.00	
(Specify Clinic #s)			
Dining Car			
Hobo Breakfast (Location TBA)			
Saturday, Sept 6 - 7:00am - Reservation for Seat		No Host	
Awards Banquet - Saturday, Sept 6 - 6:00pm - 9:00pm		\$35.00	
Specify Chicken, Beef or Vegetarian dinner			
		TOTAL DUE	

NO FURTHER WEST:
THE STORY OF THE LOS ANGELES UNION STATION
Detail Photos of LAUPT





NMRA Infonet-News

Welcome to the InfoNet News - 2014

Results of the 2014 Election

Canadian Results: 200 ballots were returned

Canadian District Director

Fred Headon (194 votes)

NMRA Canada President

Clark Kooning (198 votes)

NMRA Canada Vice President

Steve McMullin (198 votes)

There were no write-in candidates. Some ballots did not include a vote for some candidates.

US Results: 1,193 ballots submitted

Central District Director

Peter Magoun (1,185 votes)

Bob Beaty (1 vote)

Bruce Brintnall (1 vote)

John Burchnall (1 vote)

Russell K. Ceasar (1 vote)

Bob Fink (1 vote)

Paul Mangan (1 vote)

Stan Whittingham (1 vote)

The results are not official until the BOD accepts the 2014 Election Results Report at the Annual BOD Meeting in Cleveland.

John Stevens, NMRA Secretary

Model Power closes

After more than 50 years in business, hobby product manufacturer Model Power has closed.

The third-generation, family owned company stopped taking new retail customers on April 21 said Chief Financial Officer Jonathan Tager. An announcement was posted on its website on April 22.

The company is exploring licensing options for its product lines and the possibility of selling off any of its tooling that might be readily available, Tager said.

“We thank everybody for all of their support over the years, and we apologize for any inconveniences,” Tager said

Train Show Inc. acquires assets of Great Train Expo shows

Train Show Inc., the corporate parent of Greenberg’s Train and Toy Show, Great Midwest Train Show, and World’s Greatest Hobby on Tour, announced that it has acquired the assets of Great Train Expo. Train Show Inc will be sponsoring shows in many of the venues formerly used by Great Train Expo.

“This is a natural expansion of our business,” said Randy Bachmann, President of Train Show Inc. “This purchase allows us to sponsor shows from coast to coast.”

More information and a new show schedule will be posted online at www.trainshow.com.

Tom Draper – HLM, DSA, FA
Director – Support Services

New PSR Members (cont.)

Scott	Ressler	CA	Cajon
Norman	Suydam		Cajon
Wendy	Tuller	CA	Cajon
Kurt	Alexander	CA	Los Angeles
Matthew	Benedict	CA	Los Angeles
Eric	Cook	CA	Los Angeles
Jon	Cook	CA	Los Angeles
William	Harrington	CA	Los Angeles
Bob	MacKenzie	CA	Los Angeles
Joe	Nieder Korn	CA	Los Angeles
Neil	Steavenson	CA	Los Angeles
Kevin	Struckhoff	CA	Los Angeles
Paul	Yanutik	CA	Los Angeles
Robert	Behm		San Diego
Lynn	Carol	CA	San Diego
Gabe	Flores		San Diego
Wesley	Noel	CA	San Diego
Brian	Van Waay		San Diego
John	Witt	CA	San Diego
John	Yeager	CA	San Diego



Signed up for the
Convention yet?
No?! Why Not?!

Flag Stops

Lindsay Smith, PSR Member Aid
wlindsays@adelphia.net

July

- 11 Pacific Railroad Society Meeting, 1930 Joslyn Center, 210 N Chapel Ave, Alhambra CA
- 13 to 19 NMRA Convention 2014, Cleveland OH.
www.2014cleveland.org
- 18 ERHA Meeting, South Pasadena, CA <http://www.erha.org/erhainfo.htm>
- 22 to 27 AT&SF Historical & Modeling Society
Fresno

August

- 8 Pacific Railroad Society Meeting, 1930 Joslyn Center, 210 N Chapel Ave, Alhambra CA
- 2 The California Express (Fall) Railroad and Railroadiana Transportation Show. 0900 to 1500. UFCW Hall, 8550 Stanton Ave. (Stanton & Crescent Ave.), Buena Park, CA \$8.00 Kids under 12 free. californiaexpress1@yahoo.com Renee or Paul Orton (626) 281-7500 www.californiaexpress.net
- 15 ERHA Meeting, South Pasadena, CA <http://www.erha.org/erhainfo.htm>
- 23 Santa Susana Depot Swap Meet & Open House. Swap Meet 7:00 a.m. to 10:00 a.m. Open House 10:00 a.m. to 4:00 p.m. 6503 Katherine Road, Simi Valley, CA Donations to swap entrance is \$2.00/kids are free. For information on reserving tables, please email us: events@santasusannadepot.org or call Dave Putnam at 661-753-6006. <http://www.santasusannadepot.org/swapmeet.htm>.

September

- 1 LA DIV Coupler Deadline essaness@pacbell.com
- 3 - 7 NMRA PSR Regional Convention, Uniting Railroad Modelers San Diego, CA
www.psrconvention.org
- 12 Pacific Railroad Society Meeting, 1930 Joslyn Center, 210 N Chapel Ave, Alhambra CA
- 13, 14 3rd Annual Train Show, William S. Hart Park, Newhall, CA, Sponsored by the Los Angeles Co. Parks & Rec.
- 19 ERHA Meeting, South Pasadena, CA <http://www.erha.org/erhainfo.htm>
- 20, 22 Annual Anaheim Citrus Celebration. See Bob Chaparro Yahoo Group on Citrus Industry. It was announced in AAA Westways January/February 2014 Magazine

October

- 10 Pacific Railroad Society Meeting, 1930 Joslyn Center, 210 N Chapel Ave, Alhambra CA
- 11, 12 California City Renaissance Festival & Train Show, California City Central Park
- 11, 12 Second Annual Banning Train Fest. Saturday Swap Meet 0800 to 1400. LifePoint Church (Indoor Venue), 565 N. San Geronio Ave, Banning, CA Ed Ball (951-237-9818) or Ed at [BanningTrainFest dot com](http://BanningTrainFest.com)
- 17 ERHA Meeting, South Pasadena, CA <http://www.erha.org/erhainfo.htm>
- 25 Santa Susana Depot Swap Meet & Open House. Swap Meet 7:00 a.m. to 10:00 a.m. Open House 10:00 a.m. to 4:00 p.m. 6503 Katherine Road, Simi Valley, CA Donations to swap entrance is \$2.00/kids are free. For information on reserving tables, please email us: events@santasusannadepot.org or call Dave Putnam at 661-753-6006. <http://www.santasusannadepot.org/swapmeet.htm>.
- 29 - November 1st Southern Pacific Historical & Technical Society, San Luis Obispo, CA.
<http://www.sphts.org/convention/>
- 30 to Nov. 2 Joshua Tree & Southern Railroad Museum Season Opener Run <http://www.jtsrr.org/browsers/home.html> 8901 Willow Lane, Joshua Tree, CA Live Steam

November

- 1, 2 San Diego Model Railroad Museum, Tehachapi 1950's Operational Session, La Mesa MRC.
- 6 - 11 Joshua Tree & Southern Railroad Museum 34th Annual RUDY 7 1/2 " Run: <http://www.jtsrr.org/browsers/home.html> 8901 Willow Lane, Joshua Tree, CA Live Steam Terry Watson at (760) 366-8879
- 5, 8 & 9 Highland Pacific MRC Open House, San Gabriel, CA
- 14 Pacific Railroad Society Meeting, 1930 Joslyn Center, 210 N Chapel Ave, Alhambra CA
- 21 ERHA Meeting, South Pasadena, CA <http://www.erha.org/erhainfo.htm>

December

- 12 Pacific Railroad Society Meeting, 1930 Joslyn Center, 210 N Chapel Ave, Alhambra CA
- 19 ERHA Meeting, South Pasadena, CA <http://www.erha.org/erhainfo.htm>
- 31 - January 4 Joshua Tree & Southern Railroad Museum New Years Run: <http://www.jtsrr.org/browsers/home.html> 8901 Willow Lane, Joshua Tree, CA Live Steam Terry Watson at (760) 366-8879



Pacific Southwest Region

~ Directory ~

MANAGEMENT & STAFF

President	Don Fowler 10768 Sayers Ct, San Diego, CA 92071 (619) 787-1930, president@psrnmra.org	Western Region Director	Jack Hamilton, MMR 10731 Warren Road NW, Silverdale, WA 98383 (360) 308-9845, westdir@hq.nmra.org
Vice President	Carl Heimberger 41324 North 30th Street West, Palmdale, CA 93531 (714) 745-8690, vicepresident@psrnmra.org	Achievement Program Manager	Don Stewart 2722 E. Bighorn Avenue, Phoenix, AZ 85048-8984 (480) 759-5019, ap@psrnmra.org
Secretary	Kim Fowler 10768 Sayers Ct, San Diego, CA 92071 (714) 745-8690, secretary@psrnmra.org	PSR Dispatch Editor & Ballots	Ben Sevier 12793 War Horse Street, San Diego, CA 92129 (858) 538-9863, psrdispatch@psrnmra.org
Treasurer & Nominations	Tom Draper, HLM DSA 10837 N. 34th Place, Phoenix, AZ 85028-3310 (602) 953-1681, treasurer@psrnmra.org	Webmaster	Ben Sevier 12793 War Horse Street, San Diego, CA 92129 (858) 538-9863, psrdispatch@psrnmra.org
Member Services	Debbie Draper, HLM 10837 N. 34th Place, Phoenix, AZ 85028-3310 (602) 953-1681, membership@psrnmra.org	Publication Advertising	(vacant)
Member Aid	Lindsay Smith 1446 Paseo Garcia, San Dimas, CA 91773-3915 (909) 599-0182, memberaid@psrnmra.org	Historian	Lowell Spooner 10015 W Royal Oak Rd #138, Sun City, AZ 85351 (623) 977-6760, history@psrnmra.org
Contest	Bill Jacobs 4813 Plata del Sol Drive, Las Vegas, NV 89121 (702) 456-4476, contest@psrnmra.org	By-Laws & Operations Manual	Frank Tepedino 4544 Calle De Vida, San Diego, CA 92124-2304 (619) 528-0200, pubs@psrnmra.org
Education	(vacant)	Convention Coordination	Ben Sevier 12793 War Horse Street, San Diego, CA 92129 (858) 538-9863, conventions@psrnmra.org
Railettes	Kim Fowler 10768 Sayers Ct, San Diego, CA 92071 (619) 787-1930, railettes@psrnmra.org	"Chief Hobo-in-Charge"	Ed Hall MMR 304 Glasgow, Henderson, NV 89015 hobo@psrnmra.org

DIRECTORS



Arizona
Dave Irick
5722 W Cochise Dr
Glendale, AZ 85302
(623) 435-8534
Director@AzDiv-NMRA.org



Los Angeles
Bob DeMoss
3706 Woodruff Ave,
Long Beach, CA 90808
(562) 421-2199
director@ladiv-nmra.org



Cajon
Per Harwe
21460 Walnut Street, Wildomar, CA
92595-8966
(951) 440-9729
cajondivision@coastinet.com



San Diego
Pete Steinmetz
2319 Conway Drive
Escondido, CA 92026-1212
(760) 839-5877
director@sandiegodivision.org

PSR Dispatch

Published quarterly by the Pacific Southwest Region of the National Model Railroad Association®.

Material for publication must be received by the deadlines shown in the Submission Schedule, below.

Opinions expressed herein are those of the authors or the editor and are not necessarily those of the PSR. Permission to quote is granted by giving credit to the PSR, the PSR Dispatch and the individual authors.

Email articles to: psr-dispatch@sbcglobal.net, or surface mail to 12793 War Horse Street, San Diego, CA 92129-2219. Photographs (prints only) should be surface mailed. Digital images may be emailed or surface mailed. Mailed items may be on a standard CD or DVD, handwritten, typed (new or good clean ribbon) or printed on any type of printer. All photographs, disks and CD's will be returned after publication if requested. Questions or Comments? Email the editor: psrdispatch@sbcglobal.net

Printed by:
Electronic Printing Solutions,
4898 Ronson Court, Suite B
San Diego, CA 92111

The "PSR Dispatch" is composed using Adobe "Indesign CS".
Headline Fonts: Bell Gothic
Text Fonts: Adobe Caslon

NEWSLETTERS

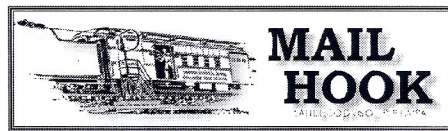


Spur Line

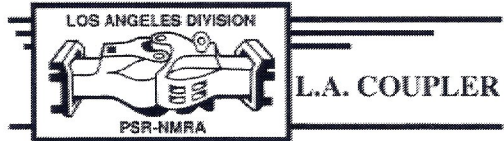
Editor — Frank Baker
5319 E.Cortez Dr. Scottsdale, AZ 85254
(602) 672-6336, SpurLine@AzDiv-NMRA.org



Editor — Gary Butts
(714) 843-9590, Cajondivision@coastinet.com



Editor — Gary Robinson
2319 Conway Drive, Escondido, CA 92026-1212
(760) 839-5877, mailhook@sandiegodivision.org



Editor — Vacant

Back issues for *PSR DISPATCH* and all four of the Division newsletters are available in PDF format from TrainNet.org at www.trainnet.org.

ON THE WEB

Home Page

www.psrnmra.org

webmaster@psrnmra.org

On the PSR Homepage

- 1 - Current issues of the PSR DISPATCH and all four of the Division newsletters (in PDF format).
- 2 - PSR Governing Manuals
- 3 - Main Sites for the 2012 Conventions
- 4 - Directory of PSR Officers and Volunteers

Arizona Division

<http://www.azdiv-nmra.org/>

Cajon Division

<http://www.cajondiv.org/>

Los Angeles Division

<http://www.ladiv-nmra.org>

San Diego Division

<http://www.sandiegodivision.org>

National Model Railroad Association

<http://www.nmra.org>

To send email to anyone in this directory, go to the PSR Web Site www.psrnmra.org and click on their email address in the appropriate section.

Submission Schedule and Planned Topics

Issue	Deadline
32/1	19 January 2014
32/2	20 April 2014
32/3	19 July 2014
32/4	21 October 2014
33/1	19 January 2015
33/2	20 April 2015
33/3	20 July 2015

Topics

- PSR 2014 Convention Info
- Officer Elections, 2014 Convention updates
- PSR 2014 Convention Issue
- Convention Reports, Contest Results
- PSR 2015 Convention Info
- Director Elections, 2015 Convention Updates
- PSR 2015 Convention Issue



PSR DISPATCH

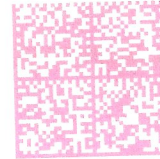
Official Publication of the
Pacific Southwest Region
National Model Railroad Association

POSTMASTER: Please send address changes to:
10837 N. 34th Place, Phoenix, AZ 85028-3310



Signed up for the
Convention yet?
No?! Why Not?

S
CA
12 JUL '14
PM 9 L



UNITED STATES POSTAGE
PITNEY BOWES
02 1P \$ 000.690
0003942297 JUL 11 2014
MAILED FROM ZIP CODE 92111



92780674982



NMRA MEMBERSHIP APPLICATION - PSR

Please accept my application for membership renewal in the NATIONAL MODEL RAILROAD ASSOCIATION, which includes the PACIFIC SOUTHWEST REGION and my local PSR Division.

New Renewal NMRA # PSR #

Name				
Address				
City	State	Zip		
Phone	Birth Date	Scale		
Email	Occupation			

NMRA Membership Type - circle your choice of options	1 Year	2 Years	Total
Member - All rights and benefits - includes subscription to NMRA Magazine	\$66.00	\$132.00	
Member - All rights and benefits - without subscription to NMRA Magazine	\$44.00	\$88.00	
PSR Dispatch subscription - Must be NMRA member to subscribe	\$12.00	\$24.00	
Family - Spouse or minor child of above member in good standing. No NMRA Magazine or voting rights. Provide family members name and date of birth here: Name: _____ DOB: _____	\$9.00	\$18.00	
Student - any person 18 yrs and under or student between the ages of 19 - 25 yrs possessing valid student ID. All rights and benefits and NMRA Magazine	\$32.00	\$64.00	
Sustaining - Mandatory for group memberships (Clubs, Associations, Businesses). All rights and benefits and NMRA Magazine	\$110.00	\$220.00	
TOTAL DUES AND SUBSCRIPTIONS PAYMENT ENCLOSED (Make checks payable to NMRA)			

Credit Card	MasterCard	VISA	AMEX	Diner's Club	Discover
Card #	CV#		Issued To (print)		
Expiration	Signature				

Month Year

MAIL TO: Debbie Draper, Membership, 10837 N. 34th Place, Phoenix, AZ 85028-3310